

Simplicity

- Fast, easy assembly.
- With our starter and adder system, workstations can easily link to create infinite layout options.
- Workstations can be converted from single- to double-sided at any time – quickly, easily and inexpensively.

Modularity

- Five standard section widths and five standard column heights.
- Section widths can be mixed and matched to suit your needs.

Strength

Made of high-strength, cold rolled steel, the system's columns provide maximum structural integrity.

Adaptability

Unique Definite Positioning System® (see page 8) allows easy, secure placement and reconfiguration of accessories.

Mobility

Mobile workstations are easily relocated, allowing fast layout changes.


Visibility

Optional task lighting provides illumination for the most exacting work.

Secure storage

Hanging drawers and overhead cabinets can be added anywhere you need secure storage for valuable tools, equipment, parts or personal effects. Lista drawer storage cabinets also make excellent companion cabinets – see Lista's General Storage Catalog.

Electrostatic control

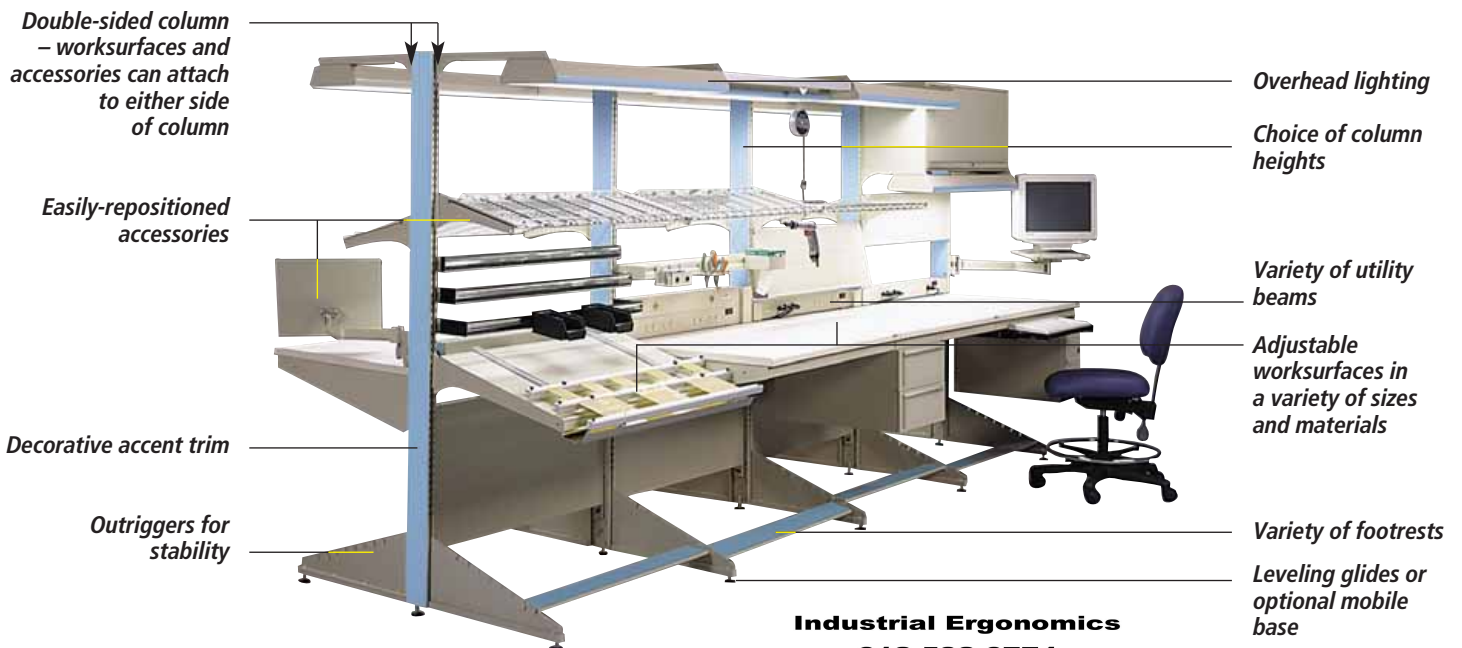
Electrostatic control  products and accessories are available to meet most ESD-related requirements.

Clean room certification

Arlink 8000 workstations have been certified for use in a CLASS 10,000 clean room per the USA Federal Standard 209E and CLASS 7 per ISO 14644 International Clean Room Standard. For information on specifying a clean room workstation, contact your Lista representative.

Aesthetics

Components are powder coated in attractive Light Gray or Sand (with other colors available on request), and a choice of ten trim colors for a contemporary appearance.



Industrial Ergonomics
612-532-6774

jeff@Industrial-Ergonomics.com



ARLINK 7000® WORKBENCHES

All-Purpose Arlink® 7000 workbenches are available in twelve standard sizes and two heights. Simply choose the base size, height and worksurface that best suits your needs, and add appropriate accessories. For other options and dimensions, please contact your Lista representative.

All-Purpose Arlink® 7000 Workbench

- Workbench height is 30" (76 cm) or 36" (91 cm)
- Heavy-duty 2" x 2" tubular legs include leveling glides
- Load capacity for bench is 1,000 lbs. (454 kg) evenly distributed



Paint Colors

Paint and trim colors for the Arlink 8000 Modular Workstation, Arlink VSI-8 upright system and the Arlink 7000 All Purpose Workbench have been expanded to include new and additional options.

Standard paint colors for both lines will continue to be Light Gray and Sand. Bright Blue and Black are being added as no upcharge options and will be available with standard lead times based on production volume at the time of order.



Light Gray (LG)



Sand (SN)



Bright Blue (BB)



Black (BL)

Worksurface Material Legend

- SL = Standard Laminate
- SD = Static Dissipative Laminate
- BB = Butcher Block-Sq Edge
- BN = Butcher Block - Bullnose Edge
- SS = Stainless Steel Over Wood Core
- RT = Phenolic Resin
- LT = Lista Top
- ST = Galvanized Steel Over Wood Core

ARLINK 7000 WORKBENCH COMBINATIONS

Stationary Workbench without Optional Leg Extenders

Bench Depth 30", Bench Height 30"

	SL	SD	BB	BN	SS	RT	LT	ST
36X30X30H	363030SL	363030SD	363030BB	363030BN	363030SS	363030RT	363030LT	363030ST
48X30X30H	483030SL	483030SD	483030BB	483030BN	483030SS	483030RT	483030LT	483030ST
60X30X30H	603030SL	603030SD	603030BB	603030BN	603030SS	603030RT	603030LT	603030ST
72X30X30H	723030SL	723030SD	723030BB	723030BN	723030SS	723030RT	723030LT	723030ST
84X30X30H	843030SL	843030SD	843030BB	843030BN	843030SS	843030RT	843030LT	843030ST
96X30X30H	963030SL	963030SD	963030BB	963030BN	963030SS	963030RT	963030LT	963030ST

Bench Depth 30", Bench Height 36"

	SL	SD	BB	BN	SS	RT	LT	ST
36X30X36H	363036SL	363036SD	363036BB	363036BN	363036SS	363036RT	363036LT	363036ST
48X30X36H	483036SL	483036SD	483036BB	483036BN	483036SS	483036RT	483036LT	483036ST
60X30X36H	603036SL	603036SD	603036BB	603036BN	603036SS	603036RT	603036LT	603036ST
72X30X36H	723036SL	723036SD	723036BB	723036BN	723036SS	723036RT	723036LT	723036ST
84X30X36H	843036SL	843036SD	843036BB	843036BN	843036SS	843036RT	843036LT	843036ST
96X30X36H	963036SL	963036SD	963036BB	963036BN	963036SS	963036RT	963036LT	963036ST

Bench Depth 36", Bench Height 30"

	SL	SD	BB	BN	SS	RT	LT	ST
36X36X30H	363630SL	363630SD	363630BB	363630BN	363630SS	363630RT	363630LT	363630ST
48X36X30H	483630SL	483630SD	483630BB	483630BN	483630SS	483630RT	483630LT	483630ST
60X36X30H	603630SL	603630SD	603630BB	603630BN	603630SS	603630RT	603630LT	603630ST
72X36X30H	723630SL	723630SD	723630BB	723630BN	723630SS	723630RT	723630LT	723630ST
84X36X30H	843630SL	843630SD	843630BB	843630BN	843630SS	843630RT	843630LT	843630ST
96X36X30H	963630SL	963630SD	963630BB	963630BN	963630SS	963630RT	963630LT	963630ST

Bench Depth 36", Bench Height 36"

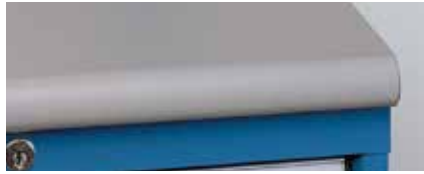
	SL	SD	BB	BN	SS	RT	LT	ST
36X36X36H	363636SL	363636SD	363636BB	363636BN	363636SS	363636RT	363636LT	363636ST
48X36X36H	483636SL	483636SD	483636BB	483636BN	483636SS	483636RT	483636LT	483636ST
60X36X36H	603636SL	603636SD	603636BB	603636BN	603636SS	603636RT	603636LT	603636ST
72X36X36H	723636SL	723636SD	723636BB	723636BN	723636SS	723636RT	723636LT	723636ST
84X36X36H	843636SL	843636SD	843636BB	843636BN	843636SS	843636RT	843636LT	843636ST
96X36X36H	963636SL	963636SD	963636BB	963636BN	963636SS	963636RT	963636LT	963636ST

Actual depth of 36"D laminate worksurface is 35.25"

ARLINK 7000 WORKBENCH WORKSURFACE OPTIONS

Standard Laminate Worksurface (SL)

- Particle board core with plastic laminate top and sides and phenolic backing sheet 1 3/8" with waterfall front edge
- Standard colors are dove gray and antique white



Static Dissipative Worksurface (SD)

- Particle board core with dissipative laminate top and sides and phenolic backing sheet 1 3/8" with waterfall front edge
- Grounding bolt and 10' grounding cord with 1 megohm resistor included
- Standard colors are dove gray and almond



Butcher Block Worksurface-Sq Edge (BB), Bullnose (BN)

- Satin finish 1 3/4" thick hardwood
- Available in standard square edge or bullnose front edge



Stainless Steel over wood core (SS)

- Worksurface is constructed of durable heavy gauge, 304 stainless steel cover, fitted over top and sides of wood core, 1 13/16" thick



Galvanized Steel over wood core (ST)

- Worksurface is constructed of durable heavy gauge galvanized steel cover, fitted over top and sides of wood core, 1 13/16" thick



Lista Top (LT)

- 1 3/4" thick worksurface with MDF core and 3/8" sanded, oil resistant pressed wood, top and bottom



Phenolic Resin (RT)

- Phenolic resin worksurfaces are designed for laboratory applications, are non-porous, resistant to a large number of aggressive chemicals
- Easy to clean, disinfect and maintain
- Standard phenolic tops are black (contact your representative for other colors)
- 1" thick



ARLINK 7000 ALL PURPOSE WORKBENCH

"L" Configuration

Available in multiple sizes and with 2 piece top or with 3 piece top with diagonal corner piece. Two piece tops are all square edge. Three piece tops in laminate and butcher block have front radius edge. Both may be assembled with left hand or right hand orientation.

This configuration eliminates the knee space interference of the bench leg that occurs when two independent benches are aligned in the "L" configuration.



"L" CONFIGURATION WITH 2 PIECE TOP

TOP MATERIAL	SL	SD	BB	SS	RT	LT
60X66X30X30H	60663030-2SL	60663030-2SD	60663030-2BB	60663030-2SS	60663030-2RT	60663030-2LT
60X72X30X30H	60723030-2SL	60723030-2SD	60723030-2BB	60723030-2SS	60723030-2RT	60723030-2LT
60X78X30X30H	60783030-2SL	60783030-2SD	60783030-2BB	60783030-2SS	60783030-2RT	60783030-2LT
72X66X30X30H	72663030-2SL	72663030-2SD	72663030-2BB	72663030-2SS	72663030-2RT	72663030-2LT
72X72X30X30H	72723030-2SL	72723030-2SD	72723030-2BB	72723030-2SS	72723030-2RT	72723030-2LT
72X78X30X30H	72783030-2SL	72783030-2SD	72783030-2BB	72783030-2SS	72783030-2RT	72783030-2LT
72X90X30X30H	72903030-2SL	72903030-2SD	72903030-2BB	72903030-2SS	72903030-2RT	72903030-2LT
84X66X30X30H	84663030-2SL	84663030-2SD	84663030-2BB	84663030-2SS	84663030-2RT	84663030-2LT
84X72X30X30H	84723030-2SL	84723030-2SD	84723030-2BB	84723030-2SS	84723030-2RT	84723030-2LT
84X78X30X30H	84783030-2SL	84783030-2SD	84783030-2BB	84783030-2SS	84783030-2RT	84783030-2LT
84X90X30X30H	84903030-2SL	84903030-2SD	84903030-2BB	84903030-2SS	84903030-2RT	84903030-2LT



"L" CONFIGURATION WITH 3 PIECE TOP

TOP MATERIAL	SL	SD	BB	BN	RT
60X66X30X30H	60663030-3SL	60663030-3SD	60663030-3BB	60663030-3BN	60663030-3RT
60X72X30X30H	60723030-3SL	60723030-3SD	60723030-3BB	60723030-3BN	60723030-3RT
60X78X30X30H	60783030-3SL	60783030-3SD	60783030-3BB	60783030-3BN	60783030-3RT
72X66X30X30H	72663030-3SL	72663030-3SD	72663030-3BB	72663030-3BN	72663030-3RT
72X72X30X30H	72723030-3SL	72723030-3SD	72723030-3BB	72723030-3BN	72723030-3RT
72X78X30X30H	72783030-3SL	72783030-3SD	72783030-3BB	72783030-3BN	72783030-3RT
72X90X30X30H	72903030-3SL	72903030-3SD	72903030-3BB	72903030-3BN	72903030-3RT
84X66X30X30H	84663030-3SL	84663030-3SD	84663030-3BB	84663030-3BN	84663030-3RT
84X72X30X30H	84723030-3SL	84723030-3SD	84723030-3BB	84723030-3BN	84723030-3RT
84X78X30X30H	84783030-3SL	84783030-3SD	84783030-3BB	84783030-3BN	84783030-3RT
84X90X30X30H	84903030-3SL	84903030-3SD	84903030-3BB	84903030-3BN	84903030-3RT

"L" Configuration with 3 Piece Top

ARLINK 7000 WORKBENCH CASTERS & LEG EXTENDERS

LEG EXTENDERS

Leg Extenders

- Allow nominal height adjustment of 6" on 2" increments
- Extender for 30" high workbench allows extended heights of 32", 34" or 36" overall height
- Extender for 36" high workbench allows extended heights of 38", 40" or 42" overall height
- Can not be used with caster kits



LEG EXTENDERS

LEG EXTENDERS (SET OF 4)	7Z30LE	6" ht adjustment in 2" increments
LEG EXTENDERS (SET OF 6)	7Z60LE	6" ht adjustment in 2" increments

CASTERS

Standard Casters

- Set of casters used to add mobility
- Swivel stem casters are 5" x 1 1/4" and replace glides which come with stationary legs
- Increases overall nominal height by 6"
- Includes 2 swivel and 2 locking swivel casters



STANDARD CASTERS

CASTERS	7M1000	adds 6" to bench height
---------	--------	-------------------------

Leveling Casters

- Easy moving, low vibration, leveling caster
- Once in position the foot pad is lowered using the manual knob or optional ratcheting mechanism
- Lifts the wheel off the floor making the bench completely stationary



LEVELING CASTERS

LEVELING CASTERS KNOB ADJ	7M5000	3-1/4" 81.8mm
LEVELING CASTERS RATCHET ADJ	7M6000	3-1/4" 81.8mm

Lab Style Casters

- Includes 2 swivel and 2 locking swivel casters
- Soft and quiet rolling with good chemical, wear and impact resistance
- Made of natural nylon, with 30% fiberglass and double ball raceway



LAB STYLE CASTERS

LAB STYLE CASTER	7M7000	adds 6" to bench height
------------------	--------	-------------------------

Castors with Leg Extenders

- Standard and lab style casters can be used with leg extenders
- Allows 6" of height adjustment in 2" increments



CASTERS WITH LEG EXTENDERS

CASTERS WITH LEG EXTENDERS	7M2000	adds 6" to bench height plus addition 6" of ht adjustment in 2" increments
----------------------------	--------	--

ARLINK 7000 WORKBENCH ACCESSORIES

Under Shelf

- For extra storage space under your benches
- 12" and 18" undershelves mount to leg braces



	36	48	60	72	84	96
12"	7Z3612US	7Z4812US	7Z6012US	7Z7212US	7Z8412US	7Z9612US
18"	7Z3618US	7Z4818US	7Z6018US	7Z7218US	7Z8418US	7Z9618US

Fixed Heavy Gauge Footrest

- Channel steel footrest fastens to leg braces



	36	48	60	72	84	96
	7E36FR	7E48FR	7E60FR	7E72FR	7E84FR	7E96FR

Back And End Stops

- Steel stops fasten to worksurface to provide back and end stops
- Stops extend approx. 4" above workbench top
- End stops are 30" deep and have rounded front corners
- Back stop can also be attached to riser shelf



	36	48	60	72	84	96
BACK AND END STOPS	36ES	48BES	60BES	72BES	84BES	96BES
BACK STOP ONLY	7J36BS	7J48BS	7J60BS	7J72BS	7J84BS	7J96BS

Outlet Strip

- Surface mounts to top or bottom of worksurface
- Lighted on/off switch
- Includes 6' power cord and circuit breaker
- Painted silver finish



PART NO.	DESCRIPTION
7H48EOP	48", 8 outlets, 15 Amp

ARLINK 7000 AND 8000 WORKBENCH ABOVE-WORKSURFACE ACCESSORIES

Riser Shelf With Box Supports

- 14" (36 cm) deep shelves are finished in either standard laminate, static dissipative laminate or butcher block to match specified worksurface
- Steel box supports are 19" (48 cm) high and 11" (28 cm) deep



	36	48	60	72	84	96
STANDARD LAMINATE	361419SL	481419SL	601419SL	721419SL	841419SL	961419SL
STATIC DISSIPATIVE LAMINATE	361419SD	481419SD	601419SD	721419SD	841419SD	961419SD
BUTCHER BLOCK	361419BB	481419BB	601419BB	721419BB	841419BB	961419BB
STAINLESS STEEL	361419SS	481419SS	601419SS	721419SS	841419SS	961419SS
GALVANIZED STEEL	361419ST	481419ST	601419ST	721419ST	841419ST	961419ST
PHENOLIC RESIN	361419RT	481419RT	601419RT	721419RT	841419RT	961419RT

Electrical Panel Insert For Box Support

- The panel insert includes illuminated 15 Amp circuit breaker, 4 duplex receptacles and 7.5' power cord
- Electrical panels can be used on one or both shelf supports and can be purchased with riser shelf or added later
- CSA listed
- 20 Amp and GFCI available on request



PART NO.
7Z19EP-□

LED Undershelf Light

- Anodized aluminum housing
- Polycarbonate lens & end caps
- 3 Position switch (high/low/off)
- Magnetic and swivel mounting
- CRI 85
- Color Temp 5000K
- Lumens:
23" = 1200 lm
34" = 1800 lm
45" = 2500 lm



LED UNDERSHELF LIGHT	23"	34"	45"
	7Z23LED	7Z34LED	7Z45LED
MAGNETIC MOUNTING BRACKETS	7ZLED-M		
SWIVEL MOUNTING BRACKETS	7ZLED-S		
CORD CLIPS	7ZLED-C		

HANGING DRAWERS

Hanging Drawer

- Steel drawer mounts under worksurface, and can slide to any horizontal position
- Includes steel ball bearing slides and recessed handles
- 100% full extension
- Each unit comes with a lock and 2 keys
- Keyed-alike and master locks are available. 16 3/4" wide

Shallow Lap Drawer

- 21 3/8" wide x 18 3/4" deep
- Lock not available
- Steel ball bearing slides and full length integrated handle



WORKSURFACE DEPTH	30" D	36"
HANGING CABINET, SINGLE 5 3/4" H DRAWER	7L1000	7L1001
HANGING CABINET, TWO 2 3/4" H DRAWERS	7L1200	7L1201
HANGING CABINET, TWO 5 3/4" D DRAWERS	7L5000	7L5001
HANGING CABINET, FOUR 2 3/4" H DRAWERS	7L1600	7L1601
HANGING CABINET, TWO 2 3/4" D, ONE 5 3/4" H DRAWERS	7L1400	7L1401
HANGING CABINET, ONE 5 3/4" H, ONE 13 15/15" D FILE DRAWERS	7L2000	7L2001
HANGING CABINET, THREE 5 3/4" H DRAWERS	7L3000	7L3001
HANGING CABINET, TWO 2 3/4" H, ONE 13 15/15" D FILE DRAWERS	7L1800	7L1801
HANGING CABINET, TWO 2 3/4" H DRAWERS, TWO 5 3/4" D DRAWERS	7L2100	7L2101
HANGING CABINET, SINGLE 13 15/15" H FILE DRAWER,	7L1100	7L1101
SHALLOW LAP DRAWER	7L8000	7L8001

DRAWER PULL OPTIONS	
Hanging Cabinet Tech Drawer Pull (Chrome Color)	4875-CHRM
Hanging Cabinet Tech Drawer Pull (Brushed Silver)	4875-BRSH
Hanging Cabinet Tech Drawer Pull (Gloss Black)	4875-GBLK

Pelican® Drawer

- Secure storage for legal hanging files or personal effects, plus segmented tray for pencils, pens, paper clips, etc.
- Designed to allow easy clearance for worker's knees
- Thermo-formed polystyrene body with polyurethane drawer face
- Mounts under worksurface to worksurface support beams
- Includes concealed ball bearing slides and fully integrated locking system



WORKSURFACE DEPTH	30" D	36"
PELICAN DRAWER	7L6000	7L6001

THE VSI-8 SYSTEM

The VSI-8 System is designed to expand the efficiency of:

- Align® adjustable height workstations
- Lista technical electronic workstations
- Lista industrial workbenches
- Retrofit to existing workbenches

You can create highly productive and efficient work centers by adding above-worksurface work aids such as task lighting, storage shelves, power beams, parts bin rails, etc.

With the VSI-8 System, you're able to utilize the Arlink 8000 system's wide range of shelving and accessory options that easily attach to the vertical column without the need for tools, using the micro and macro slots on both sides of the upright columns (see page 298 for detailed descriptions).

The VSI-8 System is easily installed by in-house personnel and can be utilized as a single unit on a stand-alone bench, or linked together using our starter/adder system. VSI columns are double-sided, and one VSI may service two benches when benches are positioned back-to-back.



VSI-8 uprights and accessories mount onto any workbench worksurface to provide a complete accessory system. VSI-8 uprights' double-sided columns allow uprights and accessories to be shared between two benches (see below).

THE VSI-1 SYSTEM

The VSI-1 System is designed to expand the efficiency of any workbench, regardless of manufacturer. Frames are sturdy, heavy gauge steel, and are slotted front and back at 1" increments for mounting accessories. Starter frames consist of 2 upright posts and a horizontal rail. Adder sets consist of an additional upright and horizontal rail. Foot plate is 2 3/4" x 4".



NEW TRIM FEATURES & IMPROVEMENTS:

Trim profile has been changed to:

- Give the column a larger, more robust, appearance
- Increase the capacity for cord management
- Accommodate future addition of column mounted utility modules such as gas, air, power and data

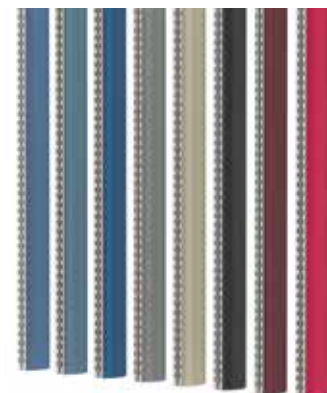
Compatibility:

The new trim profile is backward compatible with all previous Arlink 8000 columns. There will be a spacing conflict with some older systems between column accessories such as privacy panels, louvered panels and pegboard panels and the variable angle shelf. New iterations of these accessories will be compatible with both old and new style trim.

Column Cap

The column cap has been redesigned to provide a more positive and secure attachment to the column. Material thickness has been increased and color will be matched to the steel paint color. The column cap is included on all columns 54" h or shorter and is optional on all other heights.

VSI-8 Column Trim Color Options



- Bright Blue (BB)
- Classic Blue (CB)
- Royal Blue (RB)
- Dark Gray (GR)
- Sand (SN)
- Black (BL)
- Burgundy (BUR)
- Red (NR)

VSI-8

Features sturdy 45" high, 1 1/4" wide, 4" deep, roll-formed steel columns that fasten to the bench top and are stabilized by a modesty panel.

Starter assembly includes:

- 2 columns, 4 trim strips
- 1 modesty panel and mounting hardware

Adder assembly includes:

- 1 mounting column, 2 trim strips,
- 1 modesty panel and mounting hardware
- Trim strip color can be chosen from the chart on page 196
- Foot plate for surface mount uprights is 5" x 3"
- Surface mount VSI-8 System width must be a minimum of 6" shorter than worksurface width



SURFACE MOUNT	24"	30"	36"	42"	48"	60"	72"
VSI-8 STARTER ASSEMBLY (45"H)	9412-24S	9412-30S	9412-36S	9412-42S	9412-48S	9412-60S	9412-72S
ADDER ASSEMBLY (45"H)	9412-24A	9412-30A	9412-36A	9412-42A	9412-48A	9412-60A	N/A
LOW PROFILE VSI-8 UPRIGHT SYSTEM (24"H)	PAIR-4086	SINGLE-4087					

Rear Mount VSI-8 for Align Bench

Features sturdy 45" high, 1 1/4" wide, 4" deep, roll-formed steel columns that mounts to rear frame of the Align bench and is stabilized by a modesty panel.

Starter assembly includes:

- 2 columns, 4 trim strips
- 1 modesty panel and mounting hardware

Adder assembly includes:

- 1 mounting column, 2 trim strips,
- 1 modesty panel and mounting hardware
- Trim strip color can be chosen from the chart on page 196
- Includes mounting brackets for Align bench
- Rear Mount VSI-8 Systems can be full width of the Align workstation base



REAR MOUNT FOR ALIGN SECTION WIDTH*	24"	30"	36"	42"	48"	60"	72"
STARTER ASSEMBLY	9ADJ-VSI-824S	9ADJ-VSI-830S	9ADJ-VSI-836S	9ADJ-VSI-842S	9ADJ-VSI-848S	9ADJ-VSI-860S	9ADJ-VSI-872S
ADDER ASSEMBLY	9ADJ-VSI-824A	9ADJ-VSI-830A	9ADJ-VSI-836A	9ADJ-VSI-842A	9ADJ-VSI-848A	N/A	N/A

*section width must be equal to or less than Align worksurface base width

VSI-1

Frames are sturdy, heavy gauge steel, and are slotted front and back at 1" increments for mounting accessories. Uprights are available in heights of 30" and 48". Footplate is 2 3/4" x 4".

Starter assembly includes:

- 2 uprights
- 1 horizontal rail and mounting hardware

Adder assembly includes:

- 1 uprights
- 1 horizontal rail and mounting hardware



VSI-1	24"	30"	36"	42"	48"	60"
STARTER ASSEMBLY (48"H)	7Z3011	7Z3001	7Z3002	7Z3013	7Z3003	7Z3004
ADDER ASSEMBLY (48"H)	7Z3012	7Z3006	7Z3007	7Z3014	7Z3008	7Z3009
STARTER ASSEMBLY (30"H)	7Z3011C30	7Z3001C30	7Z3002C30	7Z3013C30	7Z3003C30	7Z3004C30
ADDER ASSEMBLY (30"H)	7Z3012C30	7Z3006C30	7Z3007C30	7Z3014C30	7Z3008C30	7Z3009C30

ARLINK 8000® WORKSTATION SYSTEM

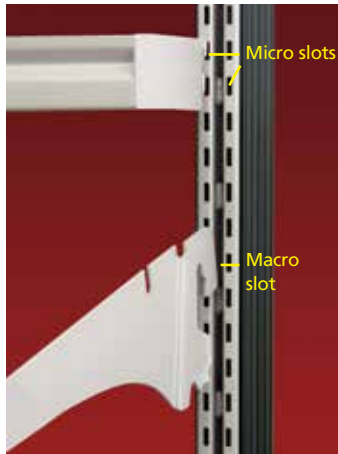
Arlink 8000® workstations give the user the greatest flexibility possible. Our unique Definite Positioning System®, numerous footprint configurations, and easy-to-assemble starter and adder sections, mean you can easily adapt and reconfigure your workstations as your needs evolve.

Definite Positioning System®

An innovative assembly concept which features one macro and two micro slots on each side of a high strength column, this approach greatly reduces the time and effort needed to attach components to the system, while making highly efficient use of space. Since columns are double-sided, a single column may be used by two back-to-back workstations, as well as adjacent sections.

Macro slots provide support for heavy-duty components, such as worksurfaces and shelving. In the case of adjacent workstation sections, the macro slot is utilized by both to save space and reduce system cost. Components that attach to the macro slots are vertically adjustable in 3" increments.

Micro slots provide support for lighter-duty components, such as power beams and parts bin rails. Micro slots are located to the left and right of the macro slot, and provide maximum component placement options. Components that attach to the micro slots are vertically adjustable in 1" increments.



Brackets fit into either micro slots or macro slots.

Paint Colors

Paint colors for the Arlink® 8000 Modular Workstations are Light Gray and Sand. Bright Blue and Black are available with standard lead times based on production volume at time of order.



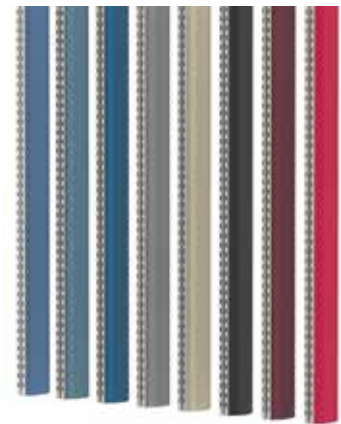
NEW TRIM FEATURES & IMPROVEMENTS:

Trim profile has been changed to:

- Give the column a larger, more robust, appearance
- To increase the capacity for cord management
- To accommodate future addition of column mounted utility modules such as gas, air, power and data

Compatibility:

- Larger trim is available in 8 trim colors and provides increased internal capacity for cord and utility management
- Backward compatible with all existing and previous Arlink® 8000 columns



- Bright Blue (BB)
- Classic Blue (CB)
- Royal Blue (RB)
- Dark Gray (GR)
- Sand (SN)
- Black (BL)
- Burgundy (BUR)
- Red (NR)

ARLINK 8000 WORKSTATION CONFIGURATION OPTIONS

Floor space utilization

Arlink® 8000 workstations enable you to achieve maximum productivity per square foot. Our workstations can be designed in numerous configurations to meet any application. You can configure your workstations to suit your needs today, and as future needs evolve.

Many workstation configurations may also be ordered with mobile capabilities, enabling you to quickly and easily relocate entire workstation groupings.

Please contact your Lista representative for additional configuration options.

Conveyor workstations

The Arlink® 8000 family of conveyor workstation systems provides cost-effective, high-efficiency workflow management throughout your entire production stream, between automatic machines and in operations including:

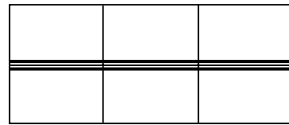
- Manual assembly areas
- Inspection
- Testing
- Rework
- Packaging

Systems are available with single- or multi-level conveyor or easily integrated with the conveyor of your choice.

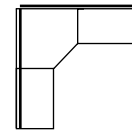
In-line Configuration



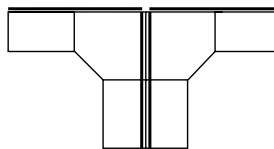
In-line Back-to-Back Configuration



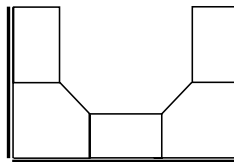
L Configuration



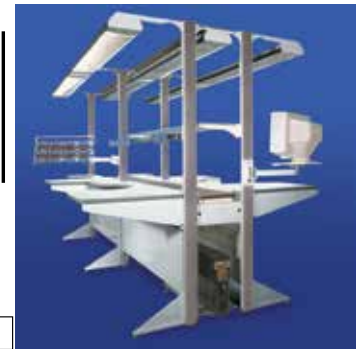
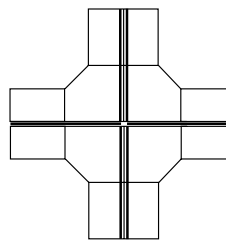
T Configuration



U Configuration

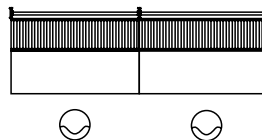


X Configuration

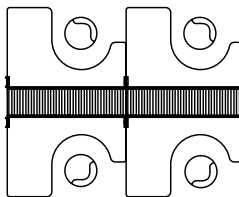


Select from Arlink® 8000 workstation options to best optimize workflow management, including workspaces and accessories (task lighting, power, air and data beams, shelving, parts bin racks, etc.).

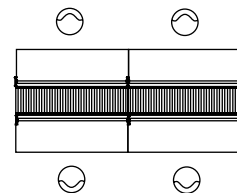
Single-Sided – operator faces conveyor with standard worksurface



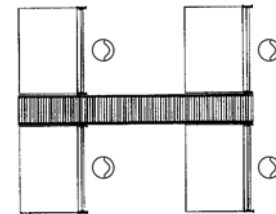
Double-Sided – operator faces conveyor with scalloped worksurface



Double-Sided – operator faces conveyor with standard worksurface



Double-Sided – operator at 90° to conveyor with standard worksurface



ARLINK 8000 EASY-ORDER COMBINATIONS

The workstation components shown on this page are preconfigured to include our most popular and versatile Arlink® 8000 workstation styles.

Arlink® 8000 workstations consist of a starter section, and as many adder sections as you need for your application.

Select from single- or double-sided starters, adders, or corners in all standard section widths and heights. Easy-Order sections include all accessories shown in the charts to the right. To order additional accessories, please see pages 174–176.

Single-Sided Starter

Assembly Includes:

- 1 Starter Assembly
- 2 Outriggers
- 1 Worksurface Assembly
- 1 Single-Sided Power Beam (15 Amp)
- 1 Open Wire Shelf Assembly, 12" Depth
- 2 Bulb Light Bulb Fixture Assembly



SINGLE-SIDED STARTERS - STANDARD LAMINATE, 30" DEPTH

COLUMN HEIGHT	30"	36"	48"	60"	72"
54"	9A-SS305430SL	9A-SS365430SL	9A-SS485430SL	9A-SS605430SL	9A-SS725430SL
72"	9A-SS307230SL	9A-SS367230SL	9A-SS487230SL	9A-SS607230SL	9A-SS727230SL
84"	9A-SS308430SL	9A-SS368430SL	9A-SS488430SL	9A-SS608430SL	9A-SS728430SL

SINGLE-SIDED STARTERS—DISSIPATIVE LAMINATE, 30" DEPTH

COLUMN HEIGHT	30"	36"	48"	60"	72"
54"	9A-SS305430SD	9A-SS365430SD	9A-SS485430SD	9A-SS605430SD	9A-SS725430SD
72"	9A-SS307230SD	9A-SS367230SD	9A-SS487230SD	9A-SS607230SD	9A-SS727230SD
84"	9A-SS308430SD	9A-SS368430SD	9A-SS488430SD	9A-SS608430SD	9A-SS728430SD



SINGLE-SIDED ADDERS - STANDARD LAMINATE, 30" DEPTH

COLUMN HEIGHT	30"	36"	48"	60"	72"
54"	9A-SA305430SL	9A-SA365430SL	9A-SA485430SL	9A-SA605430SL	9A-SA725430SL
72"	9A-SA307230SL	9A-SA367230SL	9A-SA487230SL	9A-SA607230SL	9A-SA727230SL
84"	9A-SA308430SL	9A-SA368430SL	9A-SA488430SL	9A-SA608430SL	9A-SA728430SL

SINGLE-SIDED ADDERS — DISSIPATIVE LAMINATE, 30" DEPTH

COLUMN HEIGHT	30"	36"	48"	60"	72"
54"	9A-SA305430SD	9A-SA365430SD	9A-SA485430SD	9A-SA605430SD	9A-SA725430SD
72"	9A-SA307230SD	9A-SA367230SD	9A-SA487230SD	9A-SA607230SD	9A-SA727230SD
84"	9A-SA308430SD	9A-SA368430SD	9A-SA488430SD	9A-SA608430SD	9A-SA728430SD

Single-Sided Adder

Assembly Includes:

- 1 Adder Assembly
- 1 Outrigger
- 1 Worksurface Assembly
- 1 Single-Sided Power Beam (15 Amp)
- 1 Open Wire Shelf Assembly, 12" Depth
- 2 Bulb Light Bulb Fixture Assembly

Single-Sided Corner Adder

Assembly Includes:

- 1 Adder Assembly
- 1 Outrigger
- 1 Worksurface Assembly
- 1 Single-Sided Power Beam (15 Amp)
- 1 Open Wire Shelf Assembly, 12" Depth
- 2 Bulb Light Bulb Fixture Assembly



SINGLE-SIDED CORNER ADDERS - STANDARD LAMINATE, 30" DEPTH

COLUMN HEIGHT	36"
54"	9A-SC365430SL
72"	9A-SC367230SL
84"	9A-SC385430SL

SINGLE-SIDED CORNER ADDERS —DISSIPATIVE LAMINATE, 30" DEPTH

COLUMN HEIGHT	36"
54"	9A-SC365430SD
72"	9A-SC367230SD
84"	9A-SC368430SD

ARLINK 8000 EASY-ORDER COMBINATIONS (CONT)

Double-Sided Starter

Assembly Includes:

- 1 Starter Assembly
- 4 Outriggers
- 2 Worksurface Assemblies
- Double-Sided Power Beam (15 Amp)
- 2 Open Wire Shelf Assemblies, 12" Depth
- 2 Bulb Light Bulb Fixture Assembly



DOUBLE-SIDED STARTERS - STANDARD LAMINATE, 30" DEPTH

COLUMN HEIGHT	30"	36"	48"	60"	72"
54"	9A-DS305430SL	9A-DS365430SL	9A-DS485430SL	9A-DS605430SL	9A-DS725430SL
72"	9A-DS307230SL	9A-DS367230SL	9A-DS487230SL	9A-DS607230SL	9A-DS727230SL
84"	9A-DS308430SL	9A-DS368430SL	9A-DS488430SL	9A-DS608430SL	9A-DS728430SL

SINGLE-SIDED STARTERS—DISSIPATIVE LAMINATE, 30" DEPTH

COLUMN HEIGHT	30"	36"	48"	60"	72"
54"	9A-DS305430SD	9A-DS365430SD	9A-DS485430SD	9A-DS605430SD	9A-DS725430SD
72"	9A-DS307230SD	9A-DS367230SD	9A-DS487230SD	9A-DS607230SD	9A-DS727230SD
84"	9A-DS308430SD	9A-DS368430SD	9A-DS488430SD	9A-DS608430SD	9A-DS728430SD

Double-Sided Adder

Assembly Includes:

- 1 Adder Assembly
- 2 Outriggers
- 2 Worksurface Assemblies
- 1 Double-Sided Power Beam (15 Amp)
- 2 Open Wire Shelf Assemblies, 12" Depth
- 2 Bulb Light Bulb Fixture Assembly



DOUBLE-SIDED ADDERS - STANDARD LAMINATE, 30" DEPTH

COLUMN HEIGHT	30"	36"	48"	60"	72"
54"	9A-DA305430SL	9A-DA365430SL	9A-DA485430SL	9A-DA605430SL	9A-DA725430SL
72"	9A-DA307230SL	9A-DA367230SL	9A-DA487230SL	9A-DA607230SL	9A-DA727230SL
84"	9A-DA308430SL	9A-DA368430SL	9A-DA488430SL	9A-DA608430SL	9A-DA728430SL

SINGLE-SIDED ADDERS—DISSIPATIVE LAMINATE, 30" DEPTH

COLUMN HEIGHT	30"	36"	48"	60"	72"
54"	9A-DA305430SD	9A-DA365430SD	9A-DA485430SD	9A-DA605430SD	9A-DA725430SD
72"	9A-DA307230SD	9A-DA367230SD	9A-DA487230SD	9A-DA607230SD	9A-DA727230SD
84"	9A-DA308430SD	9A-DA368430SD	9A-DA488430SD	9A-DA608430SD	9A-DA728430SD

Double Sided Corner Adder

Assembly includes:

- 1 Starter Assembly
- 2 Outriggers
- 2 Worksurface Assemblies
- 1 Double-Sided Power Beam (15 Amp)
- 2 Open Wire Shelf Assemblies, 12" Depth
- 2 Bulb Light Bulb Fixture Assembly



DOUBLE-SIDED ADDERS - STANDARD LAMINATE, 30" DEPTH

COLUMN HEIGHT	36"
54"	9A-DC365430SL
72"	9A-DC367230SL
84"	9A-DC368430SL

SINGLE-SIDED ADDERS—DISSIPATIVE LAMINATE, 30" DEPTH

COLUMN HEIGHT	36"
54"	9A-DC365430SD
72"	9A-DC367230SD
84"	9A-DC368430SD

BUILD YOUR OWN WORKSTATION

Designing a custom Arlink 8000® workstation is a simple and straight forward process.

Start by selecting the structural elements (starter and adder assemblies), add outriggers, choose worksurface(s), and add the accessories that fulfill your needs.

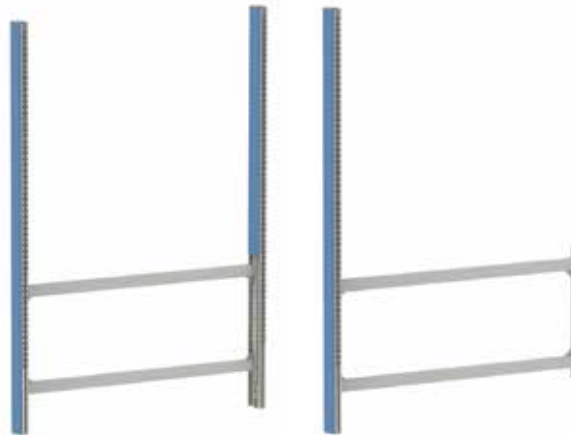
In addition to the column heights shown, columns can be custom cut to any size you request.

1. Select starter assembly (length and height)
2. Select adder assemblies (length and height)
3. Select outriggers or Select mobile starter base
4. Select appropriate worksurface assemblies
5. Select accessories



STARTER ASSEMBLY COLUMN HEIGHT	24"	30"	36"	48"	60"	72"
54"	9829	9692	9897	9896	9601	9702
72"	9831	9694	9901	9900	9600	9700
84"	9833	9696	9903	9902	9603	9704

ADDER ASSEMBLY COLUMN HEIGHT	24"	30"	36"	48"	60"	72"
54"	9830	9693	9899	9898	9606	9703
72"	9832	9695	9906	9905	9605	9701
84"	9834	9697	9908	9904	9608	9705



STARTER ASSEMBLY - OPEN STABILIZER COLUMN HEIGHT	24"	30"	36"	48"	60"	72"
54"	09829	09692	09897	09896	09601	09702
72"	09831	09694	09901	09900	09600	09700
84"	09833	09696	09903	09902	09603	09704

ADDER ASSEMBLY - OPEN STABILIZER COLUMN HEIGHT	24"	30"	36"	48"	60"	72"
54"	09830	09693	09899	09898	09606	09703
72"	09832	09695	09906	09905	09605	09701
84"	09834	09697	09908	09904	09608	09705

BUILD YOUR OWN WORKSTATION



Outriggers

OUTRIGGERS

22" (24"-30" W/SFC)	8066
30" (36" W/SFC)	8073
15" (SHELVING & CORNERS)	8078



Mobile Base Starter

MOBILE BASE-SINGLE SIDED

	24"	30"	36"	48"	60"	72"
STARTER	9997SS	9313SS	9969SS	9968SS	9668SS	9768SS
ADDER	9997SA	9313SA	9969SA	9968SA	9668SA	9768SA



Mobile Base Adder

Column Cap

- Redesigned to provide a more positive and secure attachment to the column
- Material thickness has been increased and color will be matched to the steel paint color
- Included on all columns 54"h or shorter and is optional on all other heights



Column Cap

PART NO.
8006

Back Stops

- Steel back stop prevents items from rolling off worksurface.
- 3" high.
- Mounts in micro slots, adjusts vertically in 1" increments.



BACK STOPS LENGTH

BACK STOPS LENGTH	PART NO.
24"	8962
30"	8449
36"	8461
48"	8463
60"	8466
72"	8468

ARLINK 8000 WORKSTATION WORKSURFACES

Plastic Laminate Worksurface Assemblies

Worksurface is constructed of 1" thick medium density particle board covered on top and all sides with non-glare matte finish plastic laminate. Assembly includes 2 worksurface support brackets and 2 worksurface support beams.

Color:

- Dove gray
- Antique white

Static Dissipative Laminate Worksurface Assemblies

Worksurface is the same as the plastic laminate worksurface, but with plastic laminate that provides a controlled path to ground for the dissipation of static electricity. The worksurface is provided with a grounding kit that must be used to provide proper protection for components and personnel. Static dissipative value for the material is 10⁶-10⁹. Assembly includes 2 worksurface support brackets and 2 worksurface support beams.

Color:

- Dove gray
- Almond

Also available:

- Butcher block (1 1/4" thick)
- Phenolic resin (1" thick)
- Stainless steel (1 1/8" thick)



WORKSURFACE ASSEMBLY-STANDARD LAMINATE

	24"	30"	36"	48"	60"	72"
24"	9251	9551	9351	9451	9651	9751
28"	9815	9729	9924	9923	9620	9715
30"	9818	9730	95A101	95A105	95A109	95A113
36"	9813	9733	95A104	95A108	95A112	95A116

CORNER WORKSURFACE ASSEMBLY-ADJACENT WORKSURFACE-SQ. BACK, STANDARD LAMINATE

	24"	28"	30"	36"
30" MODULE	9950	9722	9748	N/A
36" MODULE	9951	9812	95A200	95A203
48" MODULE	9956	9864	95A224	95A227
ROUND BACK CORNER	9966	9806	95A216	95A219
REAR SUPPORT POST	9094			

WORKSURFACE ASSEMBLY

	24"	-ESD LAMINATE		48"	60"	72"
		30"	36"			
24"	9251SD	9551SD	9351SD	9451SD	9651SD	9751SD
28"	9816	9754	9994	9992	9622	9716
30"	9819	9755	95A155	95A159	95A163	95A167
36"	9827	9758	95A158	95A162	95A166	95A170

CORNER WORKSURFACE ASSEMBLY-ADJACENT WORKSURFACE-ESD LAMINATE

	24"	28"	30"	36"
30" MODULE	9950SD	9722SD	9748SD	N/A
36" MODULE	9951SD	9814	95A204	95A207
48" MODULE	9956SD	9865	95A228	95A231
ROUND BACK CORNER	9966SD	9808	95A220	95A223
REAR SUPPORT POST	9094			



WORKSURFACE ASSEMBLY-BUTCHER BLOCK

	24"	30"	36"	48"	60"	72"
24"	9251BB	9551BB	9351BB	9451BB	9651BB	9751BB
28"	9815BB	9729BB	9924BB	9923BB	9620BB	9715BB
30"	9818BB	9730BB	95A101BB	95A105BB	95A109BB	95A113BB
36"	9813BB	9733BB	95A104BB	95A108BB	95A112BB	95A116BB

CORNER WORKSURFACE ASSEMBLY-ADJACENT WORKSURFACE DEPTH-BUTCHER BLOCK

	24"	28"	30"	36"
30" X 30"	9950BB	9722BB	9748BB	N/A
36" X 36"	9951BB	9812BB	95A200BB	95A203BB
48" X 48"	9956BB	9864BB	95A224BB	95A227BB
ROUND BACK CORNER	9966BB	9806BB	95A216BB	95A219BB
REAR SUPPORT POST FOR SQ. BACK CORNER	9094			

HANGING DRAWERS AND CPU HOLDERS

Hanging Drawer

- Steel drawer mounts under worksurface, and can slide to any horizontal position
- Includes steel ball bearing slides and recessed handles
- 100% full extension
- Each unit comes with a lock and 2 keys
- Keyed-alike and master locks are available. 16 3/4" wide

Lap Drawer/Pencil Drawer

- 21 3/8" wide x 18 3/4" deep
- Lock not available
- Steel ball bearing slides and full length integrated handle



8619

8626

4841



4855



8658



8664



8634



4856



4850

WORKSURFACE DEPTH

HANGING CABINET, TWO 2 3/4"D, ONE 5 3/4"H DRAWERS	4841
HANGING CABINET, FOUR 2 3/4" H DRAWERS	4842
HANGING CABINET, TWO 2 3/4"H, ONE 13 15/15"D FILE DRAWERS	4855
HANGING CABINET, TWO 2 3/4"H DRAWERS, TWO 5 3/4"D DRAWERS	4856
HANGING CABINET, SINGLE 5 3/4"H DRAWER	8619
HANGING CABINET, TWO 2 3/4"H DRAWERS	8626
HANGING CABINET, SINGLE 13 15/15"H FILE DRAWER,	8634
HANGING CABINET, TWO 5 3/4"H DRAWERS	8639
HANGING CABINET, ONE 5 3/4"H, ONE 13 15/15"D FILE DRAWERS	8658
HANGING CABINET, THREE 5 3/4"H DRAWERS	8664
LAP DRAWER	4850

DRAWER PULL OPTIONS

Hanging Cabinet Tech Drawer Pull (Chrome Color)	4875-CHRM
Hanging Cabinet Tech Drawer Pull (Brushed Silver)	4875-BRSH
Hanging Cabinet Tech Drawer Pull (Gloss Black)	4875-GBLK

Pelican® Drawer

- Secure storage for legal hanging files or personal effects, plus segmented tray for pencils, pens, paper clips, etc.
- Designed to allow easy clearance for worker's knees
- Thermo-formed polystyrene body with polyurethane drawer face
- Mounts under worksurface to worksurface support beams
- Includes concealed ball bearing slides and fully integrated locking system



PART NO.

8845

ARLINK 8000 FLOW RACKS

Flow racks can be used to stage and deliver parts utilizing gravity, reducing material handling time and costs. Bins or totes are loaded on flow rack frames from the rear, and as operators remove one from the front, a new bin glides forward on rollers. Similarly, flow rack frames can be inclined away from an operator to allow removal of completed work.

Flow racks are constructed utilizing the same Starter and Adder system common to all Arlink 8000 workstations. Worksurface assemblies and accessories as shown in this catalog can be added to create a complete parts presentation and integrated workstation system. Ball transfer tables, other material handling worksurfaces (see pages 171–172) or conveyors (see page 198) may also be integrated into the worksurface as needed. Flow racks can be made mobile by the addition of caster sets.

Flow rack sections may be joined side by side, using Starter and Adder assemblies to achieve any overall length and combination of section sizes.

Arlink 8000 Flow Racks

- Arlink 8000 flow racks sections are available in 4 standard widths from 30" to 60"
- Flow racks are height adjustable in 1" increments
- The flow rack angle is adjustable, 1400 lb. weight capacity

Arlink 8000 Flow Rack Starter Assemblies

- Consists of 2 starter assemblies, 2 outriggers, 1 flow rack shelf assembly and 4 connectors

Arlink 8000 Flow Rack Adder Assemblies

- Consists of 1 adder assembly, 1 outrigger, 1 flow rack shelf assembly and 2 connectors

Arlink 8000 Flow Rack Shelf Assemblies

- Shelf assembly includes roller tracks and guides as shown
- 3" high, 48" deep, 600 lb. weight capacity
- For additional roller tracks and guides, see chart to right

Arlink 8000 Flow Rack Shelf Accessories

- Shelves are slotted on 1 1/2" increments to accept roller tracks and guides
- Guides separate sections
- Rollers are 1 1/16" wide; tracks are 1" wide
- Two rollers are recommended for rows up to 15" wide, and 3 or more for wider rows



Arlink 8000 Flow Rack Starter Assemblies

PART NO.	SIZE
FRS3072	30" wide x 48" deep
FRS3672	36" wide x 48" deep
FRS4872	48" wide x 48" deep
FRS6072	60" wide x 48" deep

84" HIGH	
FRS3084	30" wide x 48" deep
FRS3684	36" wide x 48" deep
FRS4884	48" wide x 48" deep
FRS6084	60" wide x 48" deep

Arlink 8000 Flow Rack Adder Assemblies

PART NO.	SIZE
FRA3072	30" wide x 48" deep
FRA3672	36" wide x 48" deep
FRA4872	48" wide x 48" deep
FRA6072	60" wide x 48" deep

84" HIGH	
FRA3084	30" wide x 48" deep
FRA3684	36" wide x 48" deep
FRA4884	48" wide x 48" deep
FRA6084	60" wide x 48" deep

Arlink 8000 Flow Rack Shelf Assemblies

PART NO.	WIDTH	INCLUDES
FR30	30"	4 roller tracks, 1 guide
FR36	36"	4 roller tracks, 1 guide
FR48	48"	6 roller tracks, 2 guides
FR60	60"	6 roller tracks, 2 guides

Arlink 8000 Flow Rack Shelf Accessories

PART NO.	DESCRIPTION
FRTR	roller track
FRGU	roller guide
FRCP	replacement clip

ARLINK 8000 UTILITY AND PARTS CARTS

Single- or double-sided modular carts can be configured with any combination of shelves, parts bins, utility bins, etc. to meet your exact needs. All are constructed using Lista's standard Arlink 8000 column to allow complete interchangeability of components with workstations.

Utility and Parts Carts

- 54" high carts feature 2 wheel-locking and 2 non-locking casters, 3 1/2" diameter
- Wheels are rubber, non-marking

Accepts:

- Shelves – maximum shelf depth for parts cart is 14"
- Pegboard, louvered, reversible and modesty panels
- Bin rails
- Power, air and data beams
- Pivoting accessories



Utility and Parts Carts

PART NO.	SECTION LENGTH
SINGLE-SIDED	
8326SS	30"
8915SS	36"
8964SS	48"
DOUBLE-SIDED	
8326DS	30"
8915DS	36"
8964DS	48"



ARLINK 7000 AND 8000 SHELVES

Open Wire Shelf

- Welded steel wire shelf has chrome plated finish
- Adjusts from horizontal to 15° and 30° inclination
- Includes front lip (can be oriented up or down)
- Weight capacity 150 lbs.
- Available with micro and macro slot brackets



Open Wire Shelf-Macro Slot

VSI-8 COLUMNS	30"	36"	48"	60"	72"
12" D	8884	8927	8925	8625	8725
9"D LAB	4581	4381	4481	4681	4781

Open Wire Shelf-Micro Slot

VSI-8 AND VSI-1 COLUMNS	30"	36"	48"	60"	72"
12" D	7Z1057	7Z1058	7Z1059	7Z1060	7Z1061
9"D LAB	4282	4382	4482	4682	4782

Light Duty Adjustable Steel Shelf

- Mount flat or at a 15° angle
- Mount with the lip to the front or back
- 100 lb. weight capacity
- Available only with micro slot bracket



Light Duty Shelf

VSI-8 AND VSI-1 COLUMNS	24"	30"	36"	42"	48"	60"
12"D	7Z1166	7Z1167	7Z1168	7Z1177	7Z1169	7Z1170
15"D	7Z1178	7Z1172	7Z1173	7Z1182	7Z1174	7Z1175

Steel Shelf

- Adjusts from horizontal to 15 degree and 30 degree inclination with macro brackets and from horizontal to 15 degree with micro brackets.
- Marco slot shelves have weight capacity of 300 lbs.
- Micro slot shelves have weight capacity of 150 lbs.



Steel Shelf-Macro Slot

VSI-8 COLUMNS	24"	30"	36"	42"	48"	60"	72"
12"D	4260	4560	4360	4160	4460	4660	4760
16"D	4261	4561	4361	4161	4461	4661	4761
20"D	4262	4562	4362	4162	4462	4662	4762

Steel Shelf-Micro Slot

VSI-8 AND VSI-1 COLUMNS	24"	30"	36"	42"	48"	60"	72"
12"D	7Z2021	7Z2022	7Z2023	7Z2024	7Z2025	7Z2026	7Z2027
16"D	7Z2031	7Z2032	7Z2033	7Z2034	7Z2035	7Z2036	7Z2037
20"D	7Z2041	7Z2042	7Z2043	7Z2044	7Z2045	7Z2046	7Z2047

Shelf Lips

	24"	30"	36"	42"	48"	60"	72"
	4265	4565	4365	4165	4465	4665	4765

Steel Shelf Dividers

	12"D	16"D	20"D
8"	4120-12	4120-16	4120-20
12"	4121-12	4121-16	4121-20

Variable Angle Shelf

- Shelf mounts in forward or set back position
- Adjusts variably from totally flat to 25° angle and has a full perimeter lip
- 150 lb. capacity
- Shelf without lip is similar to variable angle shelf but includes pre-punched holes to accept vertical wire dividers
- Mounts in micro slots, adjusts vertically in 1" increments



Variable Angle Shelf

VSI-8 AND VSI-1 COLUMNS	24"	30"	36"	42"	48"	60"
18"D	8232	8312	8328	8342	8327	8497
24"D	8233	8314	8355	8378	8354	N/A

ARLINK 7000 AND 8000 WORKSTATION LIGHTING ACCESSORIES

Dual Lamp Fluorescent Light Assembly

- Economical twin tube fluorescent light fixture
- Uses economical T-8 lamps and electronic ballasts and come with a 9ft power cord
- Color temperature is 4100K
- Output: 80 footcandles (861 lumens)



	30"	36"	42"	48"	60"	72"
2 BULB T8 FLUORESCENT 19" MICRO BRACKET	9511L	9533L	9679L	9534L	9655L	9784L
2 BULB T8 FLUORESCENT 26" MICRO BRACKET	9511XL	9533XL	9679XL	9534XL	9655XL	9784XL

LED Overhead Light Assembly

- Overhead task lighting is available with a choice of 2 micro slot mounting brackets, 19" and 26"
- The 26" bracket is recommended for deeper worksurfaces and when being used over the deeper shelves
- Color Temp 5000K
- CRI 90
- Average Output 1500 Lumens (measured at surface - light 41" above)



	30"	36"	42"	48"	60"	72"
LED FIXTURE 19" MICRO BRACKET	8524L	8527L	8419L	8531L	8621L	8788L
FIXTURE 26" MICRO BRACKET	8524XL	8527XL	8419XL	8531XL	8621XL	8788XL

Switchable 4 Lamp Fluorescent Light Assembly

- Switchable 2 or 4 tube fluorescent light fixture allows user to select light intensity according to the task
- Uses energy saving T5 lamps and electronic ballasts
- Comes complete with (4) 32 watt lamps and acrylic diffuser
- Fixture tilts up or down 10°
- Includes 9' power cord



Arlink 7000

	30"	36"	42"	48"	60"	72"
4 BULB T5 FLUORESCENT 19" MICRO BRACKET	N/A	7Z2015L	N/A	7Z2014L	7Z2016L	7Z2017L
4 BULB T5 FLUORESCENT 26" MICRO BRACKET	N/A	7Z2015XL	N/A	7Z2014XL	7Z2016XL	7Z2017XL

Arlink 8000

	36"	48"	60"	72"
4 BULB T5 FLUORESCENT 19" MACRO BRACKET	4375L	4475L	4675L	4775L
4 BULB T5 FLUORESCENT 26" MACRO BRACKET	4375XL	4475XL	4675XL	4775XL

Task Light Bracket

- Sturdy welded steel bracket mounts in micro slot with 1/2" diameter hole for task light

COLUMN MOUNTING BRACKET 9"	8130
COLUMN MOUNTING BRACKET 15"	8132

ARLINK 7000 AND 800 COMPUTER RELATED ACCESSORIES

CPU Holder

- Allows CPU to be mounted under the worksurface, off the floor
- Mounts to worksurface support beams



CPU Holder Arlink 7000

30" D W/SFC	36" D W/SFC
7L7000	7L7001

Arlink 8000

8440

Adjustable CPU Holder

- Adjustable pullout CPU holder has 360° rotation
- Accommodates CPU width range of 2"-8 1/2" and CPU height range of 11" - 22"
- Mounts to worksurface support beams



Adjustable CPU Holder Arlink 7000

30" D W/SFC	36" D W/SFC
7L7004	7L7005

Arlink 8000

8424

Articulating Keyboard Tray

- Tilttable keyboard holder allows computer keyboard to be stored under worksurface when not in use
- Includes swivel pull-out mouse pad which can be attached to either right or left side



Articulating Keyboard Tray Arlink 7000

30" D W/SFC	36" D W/SFC
7Z1011-30	7Z1011-36

Arlink 8000

8451

Pull Out Keyboard Tray

- Pull out keyboard holder is available in 2 sizes; 20" x 14" and 27" x 14" which will accommodate a mouse in addition to the keyboard
- Mounts to underside of worksurface



Pull Out Keyboard Tray

PART NO.	L X W
8649	20" x 14"
8656	27" x 14"

ARLINK 7000 AND 8000 PIVOTING ACCESSORIES

Equipment Shelves

- Holds a variety of customer-supplied equipment or tools
- 75 lb. capacity



Equipment Shelves

PART NO.	DESCRIPTION
8857	12 3/8" wide x 12 3/8" deep
8839	with double articulating arm

Accessory Shelves

- For easy access to small tools, instruments, parts, etc. 21 1/4" wide x 7 3/8" deep
- 75 lb. capacity
- Ribbed mat optional



Accessory Shelves

PART NO.	DESCRIPTION
8887	accessory shelf
8765	with double articulating arm
8759	ribbed rubber mat

Document Holders

- For displaying papers, plans, etc. Includes lip for pencils, pens, etc.



Document Holders

PART NO.	DESCRIPTION
8666	11 7/8" wide x 13 3/4" high
8776	with double articulating arm

Large Document Holders

- For displaying large documents, and open binders and books
- Includes lip for pencils, pens, etc.



Large Document Holders

PART NO.	DESCRIPTION
8670	23 5/8" wide x 13 3/4" high
8786	with double articulating arm

ARLINK 7000 AND 8000 ELECTRICAL ACCESSORIES

Horizontal Power Beams

- All power beams include lighted on/off switch, breaker and 7 ½' power cord
- 15 amp beams available in single- and double-sided configurations
- Mounts in micro slots, adjusts vertically in 1" increments



	24"	30"	36"	42"	48"	60"	72"
SINGLE-SIDED - 15 AMP	4290	4590	4390	4190	4490	4690	4790
SINGLE-SIDED - 15 AMP-W/USB	4291	4591	4391	4191	4491	4691	4791
SINGLE-SIDED - 15 AMP-W/GFCI	4292	4592	4392	4192	4492	4692	4792
SINGLE-SIDED - 20 AMP	4293	4593	4393	4193	4493	4693	4793
SINGLE-SIDED - 20 AMP-W/USB	4294	4594	4394	4194	4494	4694	4794
SINGLE-SIDED - 20 AMP-W/GFCI	4295	4595	4395	4195	4495	4695	4795
DOUBLE-SIDED - 15 AMP	4296	4596	4396	4196	4496	4696	4796
Outlets per side	4	6	8	8	10	10	10

Vertical Power Strips

- Available in 15 amp or 20 amp, and GFCI
- Lighted on/off switch, 6' cord with grounded plug and circuit breaker included
- Painted black
- Mounts vertically to front and back of micro slots, adjusts vertically in 1" increments
- Bracket and hardware supplied



Vertical Power Strips

	VSI-1	VSI-8
15 AMP WITH 6 OUTLETS	7Z1062	8942
20 AMP WITH 6 OUTLETS	7Z1063	8943
15 AMP GFCI WITH 6 OUTLETS	7Z1064	8947
20 AMP GFCI WITH 6 OUTLETS	7Z1065	8948

ARLINK 7000, 8000, AND VSI PANELS

Solid Privacy Panels

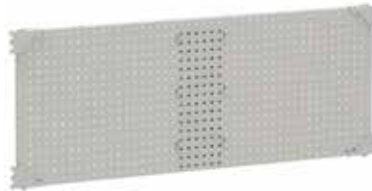
- Steel modesty panel acts as a privacy screen between double-sided assemblies (or single-sided where required)
- Steel panels can be used as fill-in panel or magnet panel to hold instructions or drawings
- Available in 12”H, 18”H, and 30”H



	24"	30"	36"	42"	48"	60"	72"
SOLID PRIVACY PANEL (12”H)	8820	8891	8803	8810	8804	8805	8727
SOLID PRIVACY PANEL (18”H)	8764	8142	8126	8128	8123	8465	8529
SOLID PRIVACY PANEL (30”H)	8777	8364	8356	8375	8357	8358	N/A

Pegboard Panels

- Sturdy painted steel pegboard panel, ideal for hanging tools, etc. 18” high
- Mounts in micro slots, adjusts vertically in 1” increments
- Available in 12”H, 18”H, and 30”H



	24"	30"	36"	42"	48"	60"	72"
PEGBOARD PANEL (18”H)	8332	8333	8334	8306	8335	8336	8337
PEGBOARD PANEL (30”H)	8087	8088	8089	8083	8090	8091	N/A

Louvered Panels

- Sturdy painted steel louvered panel, holds hanging plastic bin boxes, tool or supply holders
- Mounts in micro slots, adjusts vertically in 1” increments
- Available in 18”H and 30”H



	24"	30"	36"	42"	48"	60"	72"
LOUVERED PANEL (18”H)	8441	8442	8443	8433	8444	8445	8447
LOUVERED PANEL (30”H)	8811	8598	8599	8616	8999	8654	N/A

Reversible Markerboard/Tackboards

- Two-sided reversible board
- Features white magnetic markerboard on 1 side and gray fabric tackboard on the other
- Also functions as privacy panel and sound dampener
- 30” high
- Mounts in micro slots, adjusts vertically in 1” increments



	24"	30"	36"	42"	48"	60"
MARKER BOARD/TACKBOARD 30”H	8767	8771	8772	8797	8773	8774

Panel Joiner Kit

- Panel joiner kit enables building combo panels without then need for split bay upright
- 12” AND 18” Pegboard, louvered and solid privacy panels can be combined to span 48”, 60” and 72” spaces
- Panel joiner kit cannot be used with markerboard/tackboards



12”H	18”H
8329-12	8329-18

ARLINK 7000, 8000 AND VSI WORKSTATION STORAGE AND TOOL ACCESSORIES

Overhead Cabinets

- Steel cabinet with retractable locking door
- Includes mounting brackets, lock and 2 keys
- Keyed-alike or master lock systems are available
- Mounts in micro slots, adjusts vertically in 1" increments



	24"	30"	36"	42"	48"	60"	72"
OVERHEAD CABINETS	8921	8297	8956	8310	8955	8650	8760

Heavy-Duty Parts Bin Rails

- Heavy duty parts bin rail holds heavier items such as hardware, fittings, etc. and is easily adjustable for ergonomic access
- It can be mounted parallel to the worksurface or at a 15° angle
- Mounts in micro slots, adjusts vertically in 1" increments



	24"	30"	36"	42"	48"	60"	72"
HEAVY DUTY - TILTABLE 2"	8217	8223	8225	8222	8226	8475	8546
HEAVY DUTY - TILTABLE 4"	8258	8259	8261	8264	8260	8499	8717

Utility Bins

- Full length steel bin holds tools, bottles, wipes, reeled solder dispenser, etc.
- Front edge can be used as a parts bin rail
- Mounts in micro slots, adjusts vertically in 1" increments

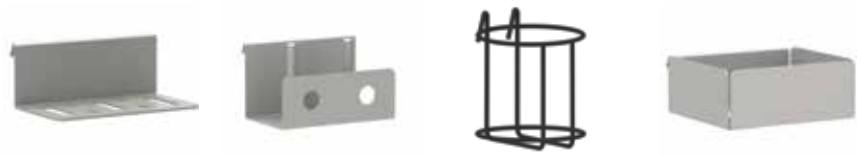


	24"	30"	36"	42"	48"	60"	72"
UTILITY BINS	8248	8299	8247	8207	8246	8446	8578

ARLINK 7000 AND 8000 WORKSTATION STORAGE AND TOOL ACCESSORIES

Tool and Accessory Holders

- Tool and accessory holders add convenience to the workplace
- They hang on parts bin rail or utility bin and can be positioned for easy reach



TOOL HOLDER	8277
SOLDER SPOOL HOLDER	8276
BOTTLE HOLDER	8281
KIM WIPE HOLDER	8275

Airgun Holder

- Mounts to work- surface support beam
- 1 1/2" x 1 1/2" with 1" diameter hole



AIRGUN HOLDER	4863
---------------	------

Wire Holder Assemblies

- Assembly includes support brackets (pair) and wire holder – 3/4" tube with threaded inserts
- Mounts in micro slots, adjusts vertically in 1" increments



	24"	30"	36"	48"	60"	72"
WIRE HOLDER ASSEMBLIES	8926	8886	8928	8929	8685	8785
WIRE GUIDE	8954	8301	8274	8273	8471	8583

Wire Guides

- Chrome plated bar with several holes, guides wire on the job without tangling or de-railing
- Mounts in micro slots, adjusts vertically in 1" increments

Label/Roll Holders

- Includes 1" diameter rod and brackets
- Rod is unpainted galvanized steel; brackets are painted to match frame
- 100 lb. weight capacity
- Interior mount available for dispensing labels and other smaller rolls
- Extended mount available for dispensing paper, bubble rolls, etc.



	24"	30"	36"	42"	48"	60"	72"
LABEL/ ROLL HOLDER (INTERIOR MOUNT)	4266	4566	4366	4166	4466	4666	4766
LABEL/ ROLL HOLDER (EXTENDED MOUNT)	4267	4567	4367	4167	4467	4667	4767

Tool Glide Track and Trolley Assemblies

- Smooth-moving glide keeps electric and pneumatic tools properly positioned
- If used in conjunction with fluorescent light assembly, glide track mounts on brackets for fluorescent lights



	24"	30"	36"	42"	48"	60"	72"
TOOL GLIDETRACK AND TOLLEY ASSEMBLIES	N/A	9958	9975	N/A	9976	9633	9728
ADDITIONAL TOOL TROLLEY	8184						

Data Beams

- Modular data beams feature 2 duplex-style outlets with 8 ports that accept modular snap-in/snap-out jacks or connectors for data, video, or audio connectivity
- Beams come with outlets, but jacks/connectors must be purchased separately
- On-site wiring for ports is responsibility of customer
- Mounts in micro slots, adjusts vertically in 1" increments
- Contact Lista for additional specifying assistance



DATA BEAMS	24"	30"	36"	42"	48"	60"	72"
SINGLE-SIDED	4288	4588	4388	4188	4488	4688	4788
DOUBLE-SIDED	4289	4589	4389	4189	4489	4689	4789

Air Beams

Air beam is supplied with:

- (1) 1/4" NPT female inlet on top
- (2) 1/4" NPT female outlets on front (single-sided) and (2) 1/4" NPT female outlets per side (double-sided) for 24" and 30" beams
- (3) 1/4" NPT female outlets on front (single-sided) and (3) 1/4" NPT female outlets per side (double-sided) for 36", 48", 60" and 72" beams
- (2) end mounted jumpers
- Mounts in micro slots, adjusts vertically in 1" increments



AIR BEAMS	24"	30"	36"	42"	48"	60"	72"
SINGLE-SIDED	8913	8879	8949	8846	8950	8951	8750
DOUBLE-SIDED	8914	8853	8977	8852	8978	8660	8751

Cable Trays

- Tray neatly gathers bundles of loose horizontal wires and provides random access for cable routing along its length
- Painted black
- Mounts in micro slots, adjusts vertically in 1" increments



CABLE TRAYS	24"	30"	36"	42"	48"	60"	72"
CABLE TRAYS	N/A	8302	8389	N/A	8390	8498	8597
CABLE CLIP	8391						

Air Supply Bracket

- Supplied with (1) 1/4" NPT female outlet
- Mounts under worksurface to worksurface support beam
- Single outlet



Air Supply Bracket

PART NO.
4866

Wrist Strap and Ground Block

- Mounts under worksurface to worksurface or support beams
- Dual receptacles for 2 wrist straps



Wrist Strap and Ground Block

PART NO.	DESCRIPTION
SC12	ground block
SC15	wrist strap with 6' coil cord*

* with 1 megohm resistor

Ground Kits

- Kit is supplied with all static dissipative worksurfaces or shelves
- Includes attaching hardware

Ground Kits

PART NO.	DESCRIPTION
SC10	worksurface kit with 8' cord*
SC30	shelf kit with 6' cord**

* with 1 megohm resistor

** without 1 megohm resistor

Common Point Ground Block

- Two connection sides – one side connects to a 1 megohm resistor, the other side bypasses the resistor and connects directly to ground
- Includes 8' cord



Common Point Ground Block

PART NO.
SC14

FLAT PANEL MONITOR ARMS (ARLINK & NEXUS)

Basic Flat Panel Monitor Arm: Horizontal Articulation; Column Mount

- Articulates horizontally
- Factory pre-tensioned articulated head
- Factory pre-tensioned joints
- Vesa 75/100 interface plate
- Supports up to 18 lbs. (8kg)
- Maximum reach 16" (407mm)
- Mounts to Arlink 8000 and Nexus uprights



Basic Dual Flat Panel Monitor Arm

ARLINK 8000 PART NO.	NEXUS PART NO.	DESCRIPTION	WEIGHT
4037	NX4037	Basic Flat Panel Monitor Arm, Column Mount	6 lbs.

Basic Dual Flat Panel Monitor Arm: Horizontal Articulation; Column Mount

- Articulates horizontally
- Factory pre-tensioned articulated head
- Factory pre-tensioned joints
- Vesa 75/100 interface plate
- Supports up to 18 lbs. (8kg) per arm
- Maximum reach 16" (407mm)
- Mounts to Arlink 8000 and Nexus uprights



Basic Dual Flat Panel Monitor Arm

ARLINK 8000 PART NO.	NEXUS PART NO.	DESCRIPTION	WEIGHT
4045	NX4045	Basic Dual Flat Panel Monitor Arm, Column Mount	12 lbs.

Basic Flat Panel Monitor Arm: Horizontal Articulation; Post Mount

- Articulates horizontally
- Factory pre-tensioned articulated head
- Factory pre-tensioned joints
- Vesa 75/100 interface plate
- Supports up to 18 lbs. (8kg)
- Maximum reach 16" (407mm)
- Solid 1" diameter 13" high aluminum post
- Mounts through worksurface, hole diameter 1/2"



Basic Flat Panel Monitor Arm

ARLINK 8000 PART NO.	NEXUS PART NO.	DESCRIPTION	WEIGHT
4054	NX4054	Basic Flat Panel Monitor Arm, Post Mount	6 lbs.

FLAT PANEL MONITOR ARMS (ARLINK & NEXUS) (CONT)

Gas Assist Tablet Arms

- Mount in microslots
- Dual cylinders with adjustable brake
- Provides easy fluid movement with fingertip control
- Supports 2–5 lbs.
- 16.7" maximum reach



Gas Assist Tablet Arms

	ARLINK 8000 COLUMN MOUNT	ARLINK 8000 POST MOUNT	NEXUS COLUMN MOUNT	NEXUS POST MOUNT
iPad 2,3,4	4047	4081	NX4047	NX4081
iPad Air	4057	4082	NX4057	NX4082
iPad Mini	4058	4083	NX4058	NX4083

Basic Dual Flat Panel Monitor Arm: Horizontal Articulation; Post Mount

- Articulates horizontally
- Factory pre-tensioned articulated head
- Factory pre-tensioned joints
- Vesa 75/100 interface plate
- Supports up to 18 lbs. (8kg) per arm
- Maximum reach 16" (407mm)
- Solid 1" diameter 13" high aluminum post
- Mounts through worksurface, hole diameter ½"



Basic Dual Flat Panel Monitor Arm

ARLINK 8000 PART NO.	NEXUS PART NO.	DESCRIPTION	WEIGHT
4060	NX4060	Basic Dual Flat Panel Monitor Arm, Post Mount	18 lbs.

Flat Panel Monitor Arms

- For attaching flat panel monitor to upright
- 17 ½ lb. capacity
- Mounts in macro slots, adjusts vertically in 3" increments *Includes mounting bracket
- Swings left and right, and has 2 articulating points
- Option to include a 9" extender which allows positioning of monitor screen away from adjacent accessories



Flat Panel Monitor Arms

ARLINK 8000 PART NO.	NEXUS PART NO.	DESCRIPTION
8415	NX8415	attaches to column
8628	NXA/FPMA	includes 9" bracket extender

Listarlink® 8000 Colors



CODE	COLOR	CODE	COLOR
LG	Light Gray	SN	Sand

Color differences exist between color samples and actual finishes. Please contact your Lista representative for accurate color matching. Custom colors are available and will be quoted on request.

Industrial Ergonomics

612-532-6774

jeff@Industrial-Ergonomics.com



Accent trim colors

Plastic accent trim for support columns, lights, steel shelves and footrests (included with each workstation) is available in a choice of colors.



COLOR
Black



COLOR
Blue



COLOR
Bright Blue



COLOR
Burgundy



COLOR
Classic Blue



COLOR
Dark Blue



COLOR
Light Gray



COLOR
Royal Blue



COLOR
Sand



COLOR
Teal



making workspace work®

ISO 9001 Certified

Product specifications are subject to change without notice and are those in effect at time of shipment.

© 2008 Lista International Corporation Printed in U.S.A.
08-08 10M

Listarlink®, Making Workspace Work®, Align®, Arlink®, Definite Positioning System®, Preventip® and Storage Wall® are registered trademarks of Lista International Corporation.