

# ergotron®



Since our founding more than three decades ago, we've used movement to remove constraints from how people create, collaborate and work with technology. We rely on ergonomic principles, user-centered designs and more than 200 patents to build kinetic work environments that help people thrive.

## *Sit-Stand Workstations*

### **The broadest portfolio for the perfect fit**

Our products foster a workplace culture of movement, encouraging active workstyles that benefit employers and employees with improved comfort, flexibility and collaboration.

Every body and every workspace is different. With the widest selection of styles, sizes and attachments, Ergotron's WorkFit® sit-stand solutions help employees find their best fit. With the ability to easily go from sitting to standing and back again, they can choose how they work in an environment that inspires creativity and long-term results.





Constant Force™

### **Monitor Mounts**

**Well-being is within  
an arm's reach**

An active sit-stand workstyle represents just one aspect of a workday that moves. With Ergotron's monitor arms, you can harness even more productivity, collaboration and comfort.

Monitor arms help keep your monitor at the right height whether sitting or standing for an ergonomic fit. Using a monitor arm on its own or with a standing desk supports overall wellness while offering flexible, personalized screen views. By freely moving one, two or three monitors, you can work smarter and free up valuable workspace.

	WorkFit-TX	5
	WorkFit Corner	6
	WorkFit-TS	7
	WorkFit-T	8
	WorkFit-TL	9
<i>WORKFIT</i>	WorkFit Electric Desk	10
	WorkFit-Z Mini	11
	WorkFit Elevate	12
	WorkFit-SR	13
	WorkFit-S	14
	WorkFit-A	15
	LX Dual Direct Arm	16
	HX Arm	17
<i>MONITOR ARMS</i>	LX Single Desk Arm	18
	LX Dual Side-by-Side Arm	22
	LX Dual Stacking Arm	20
	MXV Desk Arm	21
<i>CHARGING SYSTEMS</i>	Zip12 Wall Cabinet	22
<i>MOBILE WORKING</i>	Ergotron Mobile Desk	23



Designed to offer advanced ergonomics out-of-the box, the **WorkFit-TX** Standing Desk Converter serves up a full 20" (50,8 cm) range of sit-stand motion. The X-shaped lift folds down within inches of your desk for a sleek resting profile that's three inches below our competitors. It fits more users with

an extremely low profile that keeps the right monitor-to-keyboard height ratio. With a height-adjustable, back-tilt keyboard that sits below the worksurface, this ultra-low desk converter offers the best of both worlds—leading ergonomics sitting and standing. Available in black.



Single Monitor Kit



Dual Monitor Kit



LCD & Laptop Kit

#### ACCESSORIES





Designed with the corner in mind, the **WorkFit Corner** Standing Desk Converter offers 15" (38 cm) of easy vertical adjustment so you can work sitting or standing without bumping into cube or office walls. The WorkFit Corner sits flush to any cube or office corner thanks to a

large notched worksurface that fits single and dual monitors. Get more from your corner configuration by using up dusty corner space and taking advantage of more worksurface on both sides of your sit-stand workstation. Available in black.



**ACCESSORIES**



Single Monitor Kit



Dual Monitor Kit



LCD & Laptop Kit



Not all workspaces are created the same. That's why Ergotron's **WorkFit-TS Compact Desk Converter** is designed for limited workspace and for workers who prefer a smaller, height-adjustable desk. This compact converter features a keyboard tray to free up room on the

workstation and provide a comfortable fit during the workday. The keyboard tray easily removes for laptops or crowded work areas, and you can easily attach a single monitor kit to personalize your screen height. Available in black.



Single Monitor Kit

#### ACCESSORIES





**WorkFit-T** allows you to reinvent tight spaces into a standing desk—no installation required. This popular model provides 15" (38 cm) of vertical adjustment and moves straight up and down for more stability with no sway, tip or height-drop. It saves space by always

staying within the footprint of your desktop and offers a medium-size keyboard tray and workspace for additional work area. The WorkFit-T ships fully assembled, so you can start a new sit-stand workstyle in minutes. Available in black and white.

#### ACCESSORIES



Single Monitor Kit



Dual Monitor Kit



LCD & Laptop Kit



Monitor Arm





Looking for more? The **WorkFit-TL** is based on our well-loved WorkFit-T blueprint and features a wider keyboard tray, larger worksurface and supports a weight capacity of up to 40 lbs (18,1 kg). It offers 15" (38 cm) of easy, crank-free adjustment to keep your space, your

space. The WorkFit-TL also arrives fully assembled, so you can quickly convert any tabletop to a standing desk. Just set it on top of your current desktop, and you're ready to WorkFit. Available in black and white.





Bring fun back into your workday with the **WorkFit Electric Desk**. The no-sweat install takes less than five minutes, and then you're ready to stand with the push of a button. The rear cable management tray plus waterfall beveled edge creates 360-degree views of a clean and stylish workstation. The programmable

touchscreen stores four heights for a comfortable fit with the added protection of a collision sensor. The accessory hook stores headphones, backpacks and parkas—and even doubles as a bottle opener because it can only be a seriously fun desk if it can open a little fun. Available in black/grey.

**ACCESSORIES**



Floor Mat



Monitor Arms





**WorkFit-Z Mini** is equipped with the features you need most—easy adjustment between sitting and standing, space for your smart devices and a smooth, grey woodgrain finish that complements your office décor. Ideal for single monitors or notebooks, this compact standing desk converter turns your work surface into a height-adjustable standing desk with one

simple movement. Offering infinite, click-free vertical life adjustments up to 12.5" (32 cm) and a space-saving design, WorkFit-Z Mini also features a cable-free work surface and comfortable keyboard tray. It arrives completely assembled for an out-of-the box, no-fuss solution that gets you standing sooner. Available in dove grey.





Raise the bar on wellness, productivity and collaboration with the **WorkFit Elevate** Wall Desk. This modern wall mount reimagines underused spaces as a flexible workstation for individual work or collaboration in healthcare clinic spaces, office common areas and more. The height-adjustable surface

with or without power access easily adjusts from sit to stand, providing the full BIFMA height range of 26" (66 cm). The flip-down worksurface opens up even more space, and it arrives fully assembled to make install a breeze. Worksurface available in Walnut Hills or Mendota Maple.



**ACCESSORIES**



LD or HD  
Single Monitor Riser Kit



Own your space while infusing movement and ergonomics into your workday with the **WorkFit-SR Single**. This height-adjustable standing desk moves quietly 18" (45,7 cm) straight up and down with an extra 5" (13 cm) of independent monitor lift. Internal cable management hides cable chaos, and a pre-installed USB cable offers easy

connectivity. Take the worksurface, keyboard tray and monitor pivots to new heights to keep tall users feeling and working happy. Individual monitor and worksurface adjustment personalizes each fit. Double up the productivity with the **WorkFit-SR Dual**. Available in black or white, and short or deep worksurfaces.



LCD & Laptop Kit

#### ACCESSORIES

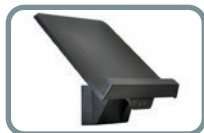




Advanced ergonomics? You got it. The **WorkFit-S Single** is one of our best solutions for flexible and comfortable working. This height-adjustable standing desk easily attaches to your desktop—just lift or lower the WorkFit-S and tweak the optional weight settings for no-sweat adjustment. Then individually fine-tune your single monitor mount and keyboard tray for how you work

best. The keyboard tray sits below the worksurface to keep your arms at an ergonomic 90-degree angle. The **WorkFit-S Dual** supports two monitors to up your productivity with the same ergonomic benefits. Additional options include an integrated worksurface and heavy duty construction. Available in black or white.

#### ACCESSORIES



Tablet/Document Holder



Dual Tall User Kit



Hinged Bow



Grommet base



**WorkFit-A** gives you the movement and flexibility you need to thrive in tight workspaces. With the integrated monitor stand, worksurface and keyboard tray, you can easily reposition the full system where you need it for every project and the best fit. The keyboard sits below

the desktop to keep ergonomics top of mind. And the cable management system hides cords to keep your space clutter-free. Additional options include an integrated worksurface and heavy duty construction.



Tall User Kit



Floor Mat

#### ACCESSORIES





Find your best view, save desk space and discover your most productive self, thanks to the **LX Desk Dual Direct Arm**. The low-profile monitor cross-bar uses a compact range of motion to keep your space, your space. With an individual per monitor weight range of 2–11 lbs

(1–5 kg) and a total weight range of 4–22 lbs (1,8–9,9 kg), LX Dual Direct supports a wide variety of monitors. Move two screens even easier with the Dual Direct Handle Kit accessory. Available in aluminum, white or matte black.



#### ACCESSORIES



Dual Direct Handle Kit





**HX Desk and Wall Arms** add flexibility and ergonomics to your work area. The innovative post design frees up space while giving you the display positioning that supports greater productivity and collaboration. Sleek and streamlined, HX Arms fit large screens weighing up

to 42 lbs (19 kg). Available in aluminum or white for one, two or three monitors. Single and dual desk arms are also available in matte black. Dual and triple versions include a handle to easily adjust the monitor height.



Heavy-Duty Tilt Pivot



Triple Bow Kit

#### ACCESSORIES





The **LX Single** provides a comfortable fit with full monitor movement and improved ergonomics for screens weighing up to 25 lbs (11,3 kg). This luxury arm easily adjusts monitors up to 34" in size and saves space as you

place the screen in the best view to tackle each to-do. The streamlined look enhances your work area, plus it's built to last. Available in aluminum, white or matte black.





The **LX Dual Side-by-Side Arm** was designed for side-by-side or low angle screen views. Easily position your dual monitors for the best views, while freeing up your desktop for office essentials. The dual arm extends LCDs

or laptops up to 25" (64 cm) with an extension range of 18" (46 cm). Project wrapped up? Reclaim a space full of opportunities by folding the arms and pushing them aside. Available in aluminum, white or matte black.





The **LX Dual Stacking Arm** lets you find your best view, save desk space and discover your most productive self, just like the LX Dual Side-by-Side Arm. This dual monitor mount lets you position

each screen separately or stack them with 13" (33 cm) of height adjustment for a new level of flexible working. Available in aluminum, white or matte black.





The sleek and lightweight **MXV Desk Monitor Arm** incorporates a modern V-shaped design to create a stable yet flexible platform for screens up to 20 lbs (9,1 kg). With a slim profile, MXV offers 13" (33 cm) of height adjustment, up to 19.5"

(49 cm) monitor extension, integrated tilt and more—all on a convenient swivel base. Available as single and dual desk mount, and single wall mount in aluminum, white or matte black.





The **Zip12 Charging Wall Cabinet** lets you power up devices in a slim, space-saving enclosure. Charge and secure up to 12 tablets and Chromebooks from a wide variety of manufacturers like

Microsoft, Samsung, Apple and more. A sliding door provides easy access to devices, and Show & Stow™ technology tilting tablet trays make loading and unloading devices simple.



From offices to conference rooms to impromptu meetings in the break room, work doesn't only happen at your assigned workstation. The **Ergotron Mobile Desk** allows employees to work individually or collectively around the office, with the same health and productivity benefits as height-adjustable

standing workstations. The easy-to-find hand lever lets employees adjust the desk height 16" (40,6 cm) for their most comfortable level. And the simple, lightweight design makes the desks easy to assemble, move and store. Available in maple worksurface.





MOVING YOU FORWARD

**Industrial Ergonomics**

**612-532-6774**

**[jeff@Industrial-Ergonomics.com](mailto:jeff@Industrial-Ergonomics.com)**

