

L LAKE SIDE[®]

INDUSTRIAL

Mobile Equipment for **MATERIAL HANDLING & STORAGE**

**MOST
PRODUCTS
SHIP IN
3 DAYS
OR LESS!**



INDUSTRIAL ERGONOMICS, INC.
PO BOX 518 LAKEVILLE, MN 55044-0518
(952) 933-7187 FAX (952) 997-6706
E-MAIL: Sales@Industrial-Ergonomics.com
www.Industrial-Ergonomics.com

Lakeside is Ingenuity On Wheels™

Ingenuity On Wheels – Over sixty years ago, Lakeside established its image as an industry innovator, with the invention of the stainless steel utility cart. In those days we were known as “America’s Cart Headquarters.”

Times and the needs of our industry have changed dramatically since then. While Lakeside remains the industry leader in quality and variety when it comes to mobile equipment, we have worked toward positioning our company as a provider of mobile solutions for an ever-changing marketplace. We’ve done that by adding mobility and flexibility to hundreds of operations in facilities such as schools, universities, warehouses, hospitals, cafeterias, vet clinics, and distribution centers.

Our manufacturing operations took a giant leap forward when we moved to our state-of-the-art plant in 2002. With our “lean” production methods, we have been able to reduce shipment lead times to “just-in-time” levels – even for our configured products.

Take a few minutes to page through this catalog. We’re confident that you’ll agree that our “Ingenuity On Wheels” tag line hits the mark.



INFORMATIONAL ICONS



Lead Times – Average lead time for standard products are noted for many products throughout this catalog. Consult factory for the lead time on quantities of 6 or more.



FedEx Ground and UPS Shippable – Products that can be shipped via FedEx Ground and UPS are noted with an “OK”.



KD or “Knocked Down” – Denotes products that are shipped unassembled in a compact shipping carton.



New Models – Denotes a new product series or new sizes or variations of a product series.

Warranty

All Lakeside products carry a One Year Full Warranty from the date of delivery. Lakeside will repair or replace all parts to correct defects in materials or workmanship. This warranty covers all components of these carts and shelving products. Neglect, alteration or misuse of the product will void any and all warranties pertaining to the product. To validate warranty, owner must present proof of purchase.

If you believe your Lakeside product is defective, please call us toll-free at 1-800-558-8565 or write to Lakeside Mfg. 4900 W. Electric Avenue, West Milwaukee, WI 53219. You can also contact us by email at info@eLakesideIndustrial.com.

LAKESIDE MANUFACTURING, INC. IS NOT RESPONSIBLE FOR ANY INCIDENTAL OR CONSEQUENTIAL DAMAGES WHICH MAY ARISE OUT OF THE PURCHASE OR USE OF ANY WIRE SHELF OR CART PRODUCT; AND LAKESIDE’S LIABILITY FOR ANY BREACH OF WARRANTY SHALL BE LIMITED TO REPLACEMENT OF THE DEFECTIVE PART OR PARTS AS DESCRIBED ABOVE.

Important Notice: Some states do not allow the exclusion or limitation of incidental or consequential damages, so the above limitation or exclusion may not apply to you. This warranty gives you specific legal rights, which vary from state to state.

General Information

F.O.B. Point:

• Milwaukee, WI 53219

Returned Goods:

Not accepted without prior factory authorization and a Returned Goods Authorization Number. Returned merchandise must be in new, undamaged condition, and in the original shipping container. All return shipments must be prepaid. A minimum 25% restocking charge will apply.

Freight Damage:

It is recommended that the outside and contents of all cartons received be inspected at the time of receipt. It is important that any damage be noted prior to signing for the shipment, since freight carriers are liable for damage only when such damage is indicated on the receipt. Per ICC regulations, it is the responsibility of the consignee to file a claim with the delivering carrier within 15 days of inspection. For assistance and replacement, contact our customer service department.

Rush Orders:

A service charge will apply to orders with expedited ship dates earlier than quoted normal lead times.

TO ORDER:

Contact your local dealer or contact Lakeside for dealer information at:

4900 West Electric Ave.
West Milwaukee, WI 53219 U.S.A.
Toll Free: (800) 558-8565
Phone: (414) 902-6400
Fax: (414) 902-6446

ACCESSORIES, FOR WIRE SHELVING & CARTS

Cart Covers **13, 31**
 Dolly Bases **12, 16, 56**
 Enclosure Panels **8, 17**
 Shelf Inlays **12**
 Stainless Steel Shelf Caps **11, 19**
 Stem Casters **11, 19**
 Three-sided Frames **5**

CARTS, ALL-WELDED CARBON STEEL

Open Shelf Carts, Carbon Steel **23**

CARTS, ALL-WELDED STAINLESS STEEL

Deep Shelf Utility Cart (700 lb cap.) **43**
 Dollies **50**
 Ergo-One® Cart Options Chart **42**
 Ergo-One®, Utility Carts
 (300, 500, 700, & 1,000 lb cap.) **40 - 42**
 Guard Rail Utility Carts
 (300, 500 & 700 lb cap.) **33**
 Handler Series, Utility Carts
 (300, 500, 700, 1,000 lb cap.) **38 - 39**
 Linen Carts (300 lb & 500 lb cap.) **31**
 Multi-Shelf Carts (500, 700, & 1,000 lb cap.) **34 - 37**
 Utility Cart Accessories, Plastic Bins & Pans **44**
 Utility Carts (1,500 lbs cap.) **29**
 Utility Carts (300 lb & 500 lb cap.) **27, 30**
 Utility Carts (700 lb & 1,000 lbs cap.) **28**

CARTS, ALUMINUM

Dollies **50**
 Multi-Shelf Cart (1,500 lb cap.) **37**

CARTS, PLASTIC

Plastic Utility Carts **32**

CARTS, NURSES OFFICE

Nurses Office Supply Cart **20**

CARTS, WIRE

Round Post Wire Carts, 3-sided **8**
 Round Post Wire Carts,
 4-Shelf & 3-Sided Dolly-based **10, 56**
 Round Post Wire Carts,
 4-Shelf & 5-Shelf (1,200 lb cap.) **7**
 Round Post Wire Security Carts **9**
 Square Post Wire Security Carts **18**
 Round Post Wire Carts, Utility (1,200 lb cap) **6**
 Square Post Wire Carts, 4-Shelf & 3-Sided **16 - 17**

FACILITIES MAINTENANCE PRODUCTS

Housekeeping Carts,
 Stainless Steel & Accessories **52 - 53**

OFFICE/SCHOOL PRODUCTS

Equipment Stands, Stainless Steel **21**
 Machine Stands, Stainless Steel **49**
 Multi-Purpose Wire Basket Carts **20**
 Stainless Steel Tables **21**
 Stainless Steel Wall Mounted Shelf **20**
 Step Stools **20**
 Wire Platforms **20**

RACKS

Aluminum Dunnage Rack
 (1,500 & 2,000 lb cap.) **48**
 Pan & Tray Racks, Accessories & Options **45 - 47, 49**

SELLING AIDS

Choosing a Cart **26**
 Durability Index **25**

SHELVING, STAINLESS

Stainless Steel Wall Mounted Shelf **20**

SHELVING, WIRE

Round Post Wire Shelving,
 Components, & Accessories **4 - 5, 11 - 13**
 Square Post Wire Shelving,
 Components, & Accessories **12 - 15, 19**
 Universal Wire Shelving Accessories **12 - 13**

WAREHOUSE PRODUCTS

Hand Trucks **24**
 Mobile Lift Tables **22**
 Platform Trucks, Powered (1500 lb cap.) **54**
 Platform Trucks, Plastic & Steel Bed **23**
 Platform Trucks, Stainless Steel **51**
 Powered Tugs (1,500 lb. tow load) & Hitch System **55**
 Shop Desks, Carbon Steel **24**



#R184872CS-4
STARTER UNIT

#R184872CA-4
ADD-ON UNIT

4-SHELF WIRE SHELVING UNITS

Easily configure shelving units to fit your unique space.

- When weight is evenly distributed:
 - 36" L shelf supports 800 lbs
 - 48" L shelf supports 800 lbs
 - 60" L shelf supports 600 lbs
 - 72" L shelf supports 400 lbs



STARTER UNITS: Each kit includes (4) shelves, (16) collets, (4) posts, and (4) feet.

54" High Units

MODEL	SIZE (D x L x H)	SHIP WEIGHT (LBS.)
R183654CS-4	18" x 36" x 54"	50
R184854CS-4	18" x 48" x 54"	60
R186054CS-4	18" x 60" x 54"	80
R187254CS-4	18" x 72" x 54"	92
R243654CS-4	24" x 36" x 54"	64
R244854CS-4	24" x 48" x 54"	76
R246054CS-4	24" x 60" x 54"	96
R247254CS-4	24" x 72" x 54"	116

72" High Units

MODEL	SIZE (D x L x H)	SHIP WEIGHT (LBS.)
R183672CS-4	18" x 36" x 72"	54
R184872CS-4	18" x 48" x 72"	64
R186072CS-4	18" x 60" x 72"	84
R187272CS-4	18" x 72" x 72"	96
R243672CS-4	24" x 36" x 72"	68
R244872CS-4	24" x 48" x 72"	80
R246072CS-4	24" x 60" x 72"	100
R247272CS-4	24" x 72" x 72"	120

63" High Units

MODEL	SIZE (D x L x H)	SHIP WEIGHT (LBS.)
R183663CS-4	18" x 36" x 63"	52
R184863CS-4	18" x 48" x 63"	62
R186063CS-4	18" x 60" x 63"	82
R187263CS-4	18" x 72" x 63"	94
R243663CS-4	24" x 36" x 63"	66
R244863CS-4	24" x 48" x 63"	78
R246063CS-4	24" x 60" x 63"	98
R247263CS-4	24" x 72" x 63"	118

86" High Units

MODEL	SIZE (D x L x H)	SHIP WEIGHT (LBS.)
R183686CS-4	18" x 36" x 86"	60
R184886CS-4	18" x 48" x 86"	70
R186086CS-4	18" x 60" x 86"	90
R187286CS-4	18" x 72" x 86"	102
R243686CS-4	24" x 36" x 86"	74
R244886CS-4	24" x 48" x 86"	86
R246086CS-4	24" x 60" x 86"	106
R247286CS-4	24" x 72" x 86"	124

Add-On Units: Each kit includes (4) shelves, (16) collets, (2) posts, (2) feet, and (8) s-hooks.

{S-hooks are used to connect the sides of the shelves without legs to the starter unit.}

54" High Units

MODEL	SIZE (D x L x H)	SHIP WEIGHT (LBS.)
R183654CA-4	18" x 36" x 54"	44
R184854CA-4	18" x 48" x 54"	54
R186054CA-4	18" x 60" x 54"	74
R187254CA-4	18" x 72" x 54"	86
R243654CA-4	24" x 36" x 54"	58
R244854CA-4	24" x 48" x 54"	70
R246054CA-4	24" x 60" x 54"	90
R247254CA-4	24" x 72" x 54"	110

72" High Units

MODEL	SIZE (D x L x H)	SHIP WEIGHT (LBS.)
R183672CA-4	18" x 36" x 72"	46
R184872CA-4	18" x 48" x 72"	56
R186072CA-4	18" x 60" x 72"	76
R187272CA-4	18" x 72" x 72"	88
R243672CA-4	24" x 36" x 72"	60
R244872CA-4	24" x 48" x 72"	72
R246072CA-4	24" x 60" x 72"	92
R247272CA-4	24" x 72" x 72"	112

63" High Units

MODEL	SIZE (D x L x H)	SHIP WEIGHT (LBS.)
R183663CA-4	18" x 36" x 63"	45
R184863CA-4	18" x 48" x 63"	55
R186063CA-4	18" x 60" x 63"	75
R187263CA-4	18" x 72" x 63"	87
R243663CA-4	24" x 36" x 63"	59
R244863CA-4	24" x 48" x 63"	71
R246063CA-4	24" x 60" x 63"	91
R247263CA-4	24" x 72" x 63"	111

86" High Units

MODEL	SIZE (D x L x H)	SHIP WEIGHT (LBS.)
R183686CA-4	18" x 36" x 86"	56
R184886CA-4	18" x 48" x 86"	66
R186086CA-4	18" x 60" x 86"	86
R187286CA-4	18" x 72" x 86"	98
R243686CA-4	24" x 36" x 86"	70
R244886CA-4	24" x 48" x 86"	82
R246086CA-4	24" x 60" x 86"	102
R247286CA-4	24" x 72" x 86"	120

SHELVING UNIT COMPONENT PARTS

COMPONENT SHELVES

MODEL	SHELF SIZE (D x L)	SHIP WEIGHT (LBS.)
R1836C	18" x 36"	10
R1848C	18" x 48"	12
R1860C	18" x 60"	12
R1872C	18" x 72"	20
R2436C	24" x 36"	13
R2448C	24" x 48"	16
R2460C	24" x 60"	21
R2472C	24" x 72"	26



COMPONENT POSTS

• Post are double notched on 8" centers for ease of assembly.

MODEL	POST HEIGHT	SHIP WEIGHT (LBS.)
R54C	54"	3
R63C	63"	4
R72C	72"	4
R86C	86"	5



THREE-SIDED FRAMES

Gain greater rigidity without losing space.

Assembles like a shelf with a connection at all four posts. Great for adding stability to units that have a lot of space in between shelves. Also can be used as a ledge to keep items from falling off shelves.

MODEL NO.	FITS SHELF SIZE	SHIP WEIGHT (LBS.)
RTTF1836	18 x 36	3.0
RTTF1848	18 x 48	4.0
RTTF1860	18 x 60	5.0
RTTF1872	18 x 72	6.0
RTTF2436	24 x 36	3.0
RTTF2448	24 x 48	4.0
RTTF2460	24 x 60	5.0
RTTF2472	24 x 72	6.0



ROUND POST WIRE SHELF UTILITY CARTS

Open wire construction allows air circulation, reduces dust and dirt buildup.

- 39" height provides a safe, full view during transport
- All swivel casters provide ultimate maneuverability
- 1,200 lb total cart capacity withstands your heaviest loads
- Carts include 2 ea. U-handles

STANDARD PRODUCTS
SHIP IN **3** DAYS
OR LESS



#R1848CUC-2



#R2436CUC-3

2-Shelf Carts

Kit includes (2) shelves, (2) U-handles, (8) collets, (2) swivel casters, and (2) swivel casters with brakes.

MODEL	SHELF SIZE (D X L)	SHIP WEIGHT (LBS.)
R1836CUC-2	18" x 36"	40
R1848CUC-2	18" x 48"	47
R1860CUC-2	18" x 60"	56
R2436CUC-2	24" x 36"	48
R2448CUC-2	24" x 48"	54
R2460CUC-2	24" x 60"	64

3-Shelf Carts

Kit includes (3) shelves, (2) U-handles, (12) collets, (2) swivel casters, and (2) swivel casters with brakes.

MODEL	SHELF SIZE (D X L)	SHIP WEIGHT (LBS.)
R1836CUC-3	18" x 36"	50
R1848CUC-3	18" x 48"	57
R1860CUC-3	18" x 60"	64
R2436CUC-3	24" x 36"	61
R2448CUC-3	24" x 48"	70
R2460CUC-3	24" x 60"	85

UTILITY CART HANDLES

MODEL	H X D	SHIP WEIGHT (LBS.)
RUH218C	33" x 18"	11
RUH224C	33" x 24"	12



ROUND POST WIRE CARTS

Store and go wire shelf carts are extra strength for your multi-purpose needs

- 1,200 lb total cart capacity withstands your heaviest loads
- 5" all swivel casters provide ultimate maneuverability



#R184863CC-5



#R184863CC-4

5-Shelf Carts: Kit includes: (4) posts, (5) shelves, (20) collets, (2) swivel casters, and (2) swivel casters with brakes.

4-Shelf Carts: Kit includes: (4) posts, (4) shelves, (16) collets, (2) swivel casters, and (2) swivel casters with brakes.

54" Units (60" w/casters)

MODEL	SHELF SIZE (D X L)	SHIP WEIGHT (LBS.)
R183654CC-5	18" x 36"	71.5
R184854CC-5	18" x 48"	84
R186054CC-5	18" x 60"	109
R187254CC-5	18" x 72"	124
R243654CC-5	24" x 36"	89
R244854CC-5	24" x 48"	104
R246054CC-5	24" x 60"	129
R247254CC-5	24" x 72"	154

54" Units (60" w/casters)

MODEL	SHELF SIZE (D X L)	SHIP WEIGHT (LBS.)
R183654CC-4	18" x 36"	62
R184854CC-4	18" x 48"	72
R186054CC-4	18" x 60"	92
R187254CC-4	18" x 72"	104
R243654CC-4	24" x 36"	76
R244854CC-4	24" x 48"	88
R246054CC-4	24" x 60"	108
R247254CC-4	24" x 72"	128

63" Units (69" w/casters)

MODEL	SHELF SIZE (D X L)	SHIP WEIGHT (LBS.)
R183663CC-5	18" x 36"	73.5
R184863CC-5	18" x 48"	86
R186063CC-5	18" x 60"	111
R187263CC-5	18" x 72"	126
R243663CC-5	24" x 36"	91
R244863CC-5	24" x 48"	106
R246063CC-5	24" x 60"	131
R247263CC-5	24" x 72"	156

63" Units (69" w/casters)

MODEL	SHELF SIZE (D X L)	SHIP WEIGHT (LBS.)
R183663CC-4	18" x 36"	64
R184863CC-4	18" x 48"	74
R186063CC-4	18" x 60"	94
R187263CC-4	18" x 72"	106
R243663CC-4	24" x 36"	78
R244863CC-4	24" x 48"	90
R246063CC-4	24" x 60"	110
R247263CC-4	24" x 72"	130

72" Units (78" w/casters)

MODEL	SHELF SIZE (D X L)	SHIP WEIGHT (LBS.)
R183672CC-5	18" x 36"	75.5
R184872CC-5	18" x 48"	88
R186072CC-5	18" x 60"	113
R187272CC-5	18" x 72"	128
R243672CC-5	24" x 36"	93
R244872CC-5	24" x 48"	108
R246072CC-5	24" x 60"	133
R247272CC-5	24" x 72"	158

72" Units (78" w/casters)

MODEL	SHELF SIZE (D X L)	SHIP WEIGHT (LBS.)
R183672CC-4	18" x 36"	66
R184872CC-4	18" x 48"	76
R186072CC-4	18" x 60"	96
R187272CC-4	18" x 72"	108
R243672CC-4	24" x 36"	80
R244872CC-4	24" x 48"	92
R246072CC-4	24" x 60"	112
R247272CC-4	24" x 72"	132

ROUND POST 3-SIDED CARTS

Protect your cargo with this wire cart's secure mesh panels.

- 1,200 lb total cart capacity withstands your heaviest loads
- 5" casters provide ultimate maneuverability
- Mesh side and back panels (largest opening is 3" x 3") allow safe handling of product during transit. Panels install and remove easily by hooking into the top and bottom shelf



63" (69" w/casters)

MODEL	SHELF SIZE (D X L)	SHIP WEIGHT (LBS.)
R183663CTS-4	18" x 36"	86
R184863CTS-4	18" x 48"	98
R186063CTS-4	18" x 60"	123
R187263CTS-4	18" x 72"	140
R243663CTS-4	24" x 36"	104
R244863CTS-4	24" x 48"	118
R246063CTS-4	24" x 60"	143
R247263CTS-4	24" x 72"	168

72" (78" w/casters)

MODEL	SHELF SIZE (D X L)	SHIP WEIGHT (LBS.)
R183672CTS-4	18" x 36"	88
R184872CTS-4	18" x 48"	100
R186072CTS-4	18" x 60"	125
R187272CTS-4	18" x 72"	142
R243672CTS-4	24" x 36"	106
R244872CTS-4	24" x 48"	120
R246072CTS-4	24" x 60"	145
R247272CTS-4	24" x 72"	170



#R184863CTS-4

SHELF-ATTACHED ENCLOSURE PANELS

Convert open shelving to 3-sided enclosed units.

Locate cart dimension and then order quantities shown of each panel model number.



Cart W x L	Panel Model # REP1364C	69" H Cart REP1964C	Panel Model # REP1372C	78" H Cart REP1972C
18 x 36	3	1	3	1
18 x 48	2	2	2	2
18 x 60	3	2	3	2
18 x 72	4	2	4	2
24 x 36	1	3	1	3
24 x 48	0	4	0	4
24 x 60	1	4	1	4
24 x 72	2	4	2	4
Panel Wt./Ea. (LBS.)	4	6	5	7



ROUND POST WIRE SECURITY CARTS

Securely stores and transports your valuable items

- 1,200 lb total cart capacity withstands your heaviest loads
- 5" casters provide ultimate maneuverability
- Wire 2.5" x 2.5" mesh construction provides easy visibility of contents
- Doors open 270° for easy access
- Padlock hasp on reinforced door frame

KIT INCLUDES:

(4) posts, (2) shelves, (8) collets, (2) swivel casters, (2) swivel casters with brakes, correct size security cage according to the chart below, and appropriate assembly hardware.

Padlock is NOT included
Can purchase additional shelves separately

MODEL	SIZE (D x L x H)	SHIP WEIGHT (LBS)
R244863CSEC-2	24" X 48" X 69"	105
R246063CSEC-2	24" X 60" X 69"	112



NEW!



SECURITY CAGES

Convert open shelving units to security cages

- Locate cart dimensions and order corresponding cage

MODEL	SIZE (D x L x H)	SHIP WEIGHT (LBS)
SC244863	24" X 48" X 63"	45
SC246063	24" X 60" X 63"	52



DOLLY BASED CARTS

Transport heavier loads with optimal maneuverability.

NEW!

- Corner bumpers protect walls and doorways.
- Corrosion resistant dolly base of solid stainless steel construction with built in corner bumper.

3-Sided Dolly Based Carts

- Shelf-attached side and back enclosure panels of 3" x 3" wire keep materials from falling off cart during transport.
- Open wire design provides for complete visibility during transport.
- Cart capacity of 2,400 lbs.
- Solid stainless steel dolly with built in corner bumpers is corrosion resistant.
- Comes standard with 2 swivel & 2 swivel/brake 6" x 2" polyurethane plate casters.
- Optional factory installed tow hitch for use with #8162 Powered Tug. (Add "TOW" to the end of the part number. See page 55 for more details. Example: RDB6246063CTS-4TOW)
- 4-shelf round post units. (Also offered in square post units.)

4-Shelf Dolly Based Carts

- Cart capacity of 2,400 lbs.
- Solid stainless steel dolly with built in corner bumpers is corrosion resistant.
- Comes standard with 2 swivel & 2 swivel/brake 6" x 2" polyurethane plate casters.
- Optional factory installed tow hitch for use with #8162 Powered Tug. (Add "TOW" to the end of the part number. See page 55 for more details. Example: RDB6246063CC-4TOW)
- 4-shelf round post units. (Also offered in square post units.)



RDB6244863CC-4



RDB6244863CTS-4

MODEL	SIZE (D X L X H)	SHIP WT. (LBS.)
RDB6184863CTS-4	18 x 48 x 71.5	137
RDB6186063CTS-4	18 x 60 x 71.5	167
RDB6244863CTS-4	24 x 48 x 71.5	159
RDB6246063CTS-4	24 x 60 x 71.5	189
RDB6184872CTS-4	18 x 48 x 80.5	139
RDB6186072CTS-4	18 x 60 x 80.5	169
RDB6244872CTS-4	24 x 48 x 80.5	161
RDB6246072CTS-4	24 x 60 x 80.5	191

MODEL	SIZE (D X L X H)	SHIP WT. (LBS.)
RDB6184854CC-4	18 x 48 x 62.5	115
RDB6186054CC-4	18 x 60 x 62.5	141
RDB6244854CC-4	24 x 48 x 62.5	133
RDB6246054CC-4	24 x 60 x 62.5	159
RDB6184863CC-4	18 x 48 x 71.5	117
RDB6186063CC-4	18 x 60 x 71.5	143
RDB6244863CC-4	24 x 48 x 71.5	135
RDB6246063CC-4	24 x 60 x 71.5	161



#RINSERT



#RFOOT

FOOT COMPONENTS

MODEL	DESCRIPTION
RINSERT	POST INSERT
RFOOT	INCLUDES INSERT AND BOLT

S HOOK



- For use with add-on shelving units. Use (2) per shelf to replace 2 posts in continuous shelving configurations

MODEL
RSHOOK

POST CLAMP



- Used to clamp two separate units together

MODEL
RPCLAMP

STEM CASTERS

MODEL	WHEEL DIMENSIONS	CAPACITY (LBS.)	SHIP WEIGHT (LBS.)	TYPE	TREAD
RP5S	5" X 1 1/4"	300	3	Swivel	Polyurethane
RP5R	5" X 1 1/4"	300	3	Rigid	Polyurethane
RP5BL	5" X 1 1/4"	300	3	Swivel/Brake	Polyurethane
RDB-3	3 1/2" dia Donut Bumper	—	1	—	—



SHELF DIVIDERS

MODEL	SIZE (L X H)	SHIP WEIGHT (LBS.)
RD18C	18" x 8"	1
RD24C	24" x 8"	1



#RD18C

SIDE & BACK LEDGES

MODEL	SIZE (L X H)	SHIP WEIGHT (LBS.)
RL18-4C	18" x 4"	1
RL24-4C	24" x 4"	1
RL36-4C	36" x 4"	2
RL48-4C	48" x 4"	2
RL60-4C	60" x 4"	3
RL72-4C	72" x 4"	3



#RL18-4C

STAINLESS STEEL SHELF CAP

Converts your wire shelf into a solid surface.

- Fits easily over wire shelves
- Continuous flat surface prevents supplies from slipping through gaps
- Stainless steel is easy to sanitize and extra durable



MODEL	SIZE (D X L)	SHIP WEIGHT (LBS.)
RSSCAP1836	18" x 36"	11
RSSCAP1848	18" x 48"	14
RSSCAP1860	18" x 60"	16.5
RSSCAP1872	18" x 72"	19
RSSCAP2436	24" x 36"	13.5
RSSCAP2448	24" x 48"	17
RSSCAP2460	24" x 60"	20
RSSCAP2472	24" x 72"	23

ROUND PLASTIC COLLETS

- Additional collet sleeves attach to posts to position shelves



#RPSSC

MODEL
RPSSC

UNIVERSAL WIRE ACCESSORIES.....

SEISMIC FOOT PLATE

Bolt post to floor for a more stable base in regions where earthquakes can occur or on cruise ships (hardware not included)



#RPPLATE

PART NUMBER	SHIP WEIGHT (LBS.)
RPPLATE	0.38



#RSLH-6

6" SHELF LABEL HOLDER

MODEL	SHIP WEIGHT (LBS.)
RSLH-6	1.0

LEVELING FOOT

Non-marking polypropylene glide.



#WLEVCAP

MODEL
WLEVCAP

HARD PLASTIC SHELF INLAYS

Heavy duty nylon inlays keep even the smallest supplies safely on board.

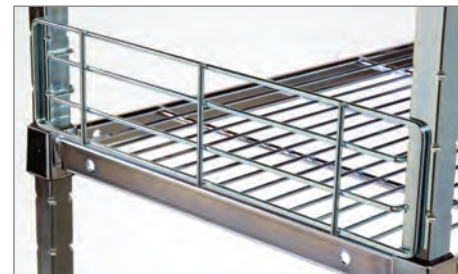
- Continuous flat surface prevents supplies from slipping through gaps
- Easy-to-clean inlays also function as dust covers



STANDARD PRODUCTS SHIP IN 3 DAYS OR LESS

MODEL	SIZE (D X L)	SHIP WEIGHT (LBS.)
RC1836H	18" x 36"	1.5
RC1848H	18" x 48"	2
RC1860H	18" x 60"	2.5
RC1872H	18" x 72"	3
RC2436H	24" x 36"	2
RC2448H	24" x 48"	2.75
RC2460H	24" x 60"	3.5
RC2472H	24" x 72"	4

UNIVERSAL SIDE AND BACK LEDGES



MODEL	SIZE (L X H)	SHIP WEIGHT (LBS.)
UL18-4	18" x 4"	1
UL24-4	24" x 4"	1
UL36-4	36" x 4"	2
UL48-4	48" x 4"	2
UL60-4	60" x 4"	3
UL72-4	72" x 4"	3

DOLLY BASES

Dolly bases attach to wire units to carry heavier loads more smoothly

- Stainless steel runners and cross members provide extra support
- Includes 2 swivel and 2 swivel/brake 6" x 2" polyurethane plate casters
- Corner bumpers protect walls and doorways

MODEL	SHELF SIZE (D X L)	SHIP WEIGHT (LBS.)
RDB61836	18" x 36"	35
RDB61848	18" x 48"	41
RDB61860	18" x 60"	47
RDB61872	18" x 72"	53
RDB62436	24" x 36"	37
RDB62448	24" x 48"	43
RDB62460	24" x 60"	49
RDB62472	24" x 72"	55



STANDARD PRODUCTS SHIP IN 3 DAYS OR LESS

Note: Applies to all items on this page.

.....fit both Round Post and Square Post Wire Units.

NYLON CART COVERS (FOR WIRE CARTS)

Covers protect contents from dust and other airborne contaminants.

- Velcro closures for easy access
- Standard color is blue
- Additional colors, sizes and zipper closures available. Ask for details.



63" High

MODEL	FITS SHELF SIZE (D X L)	SHIP WEIGHT (LBS.)
RCC183663	18" x 36"	4
RCC184863	18" x 48"	5
RCC186063	18" x 60"	6
RCC187263	18" x 72"	7
RCC243663	24" x 36"	4
RCC244863	24" x 48"	5
RCC246063	24" x 60"	6
RCC247263	24" x 72"	7

72" High

MODEL	FITS SHELF SIZE (D X L)	SHIP WEIGHT (LBS.)
RCC183672	18" x 36"	4
RCC184872	18" x 48"	5
RCC186072	18" x 60"	6
RCC187272	18" x 72"	7
RCC243672	24" x 36"	4
RCC244872	24" x 48"	5
RCC246072	24" x 60"	6
RCC247272	24" x 72"	7

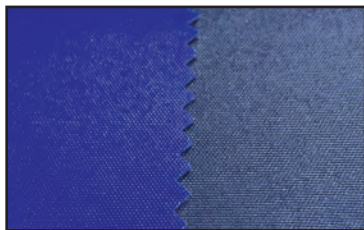


OPTIONAL NYLON CART COVER ACCESSORIES

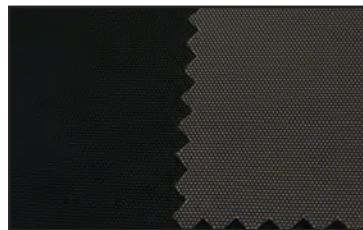
- Clear ID pocket for easy identification
- Front and back flaps allow quick access from either side
- Continuous Velcro safely seals in contents
- Cut-outs for handles

Contact customer service for details.

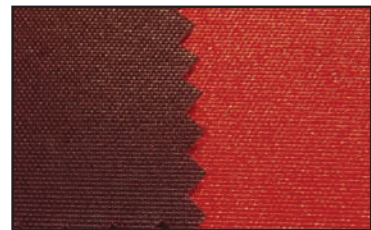
COLOR OPTIONS



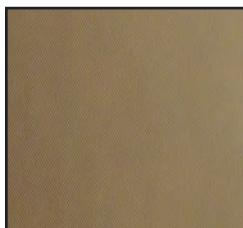
COBALT/ NAVY



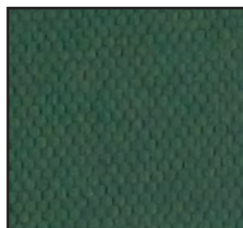
BLACK/CHARCOAL



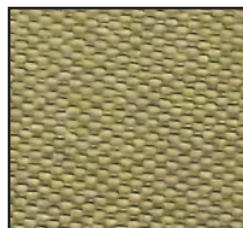
BURGUNDY/RED



BEIGE



HUNTER



KHAKI



YELLOW



WHITE



4-SHELF SQUARE POST WIRE SHELVING UNITS

Square tubular post design uses 27% more steel for greater strength and rigidity

- Weight capacity varies per shelf length
 - 36" L shelf supports 1,000 lbs, evenly distributed
 - 48" L shelf supports 1,000 lbs, evenly distributed
 - 60" L shelf supports 750 lbs, evenly distributed
 - 72" L shelf supports 500 lbs, evenly distributed



Please call factory for lead times.

STARTER UNITS: Each kit includes (4) shelves, (16) collets, (4) posts, and (4) feet.

54" High Units

MODEL	SIZE (D x L x H)	SHIP WEIGHT (LBS.)
S183654ZS-4	18" x 36" x 54"	60
S184854ZS-4	18" x 48" x 54"	76
S186054ZS-4	18" x 60" x 54"	88
S187254ZS-4	18" x 72" x 54"	102
S243654ZS-4	24" x 36" x 54"	70
S244854ZS-4	24" x 48" x 54"	90
S246054ZS-4	24" x 60" x 54"	108
S247254ZS-4	24" x 72" x 54"	124

64" High Units

MODEL	SIZE (D x L x H)	SHIP WEIGHT (LBS.)
S183664ZS-4	18" x 36" x 64"	64
S184864ZS-4	18" x 48" x 64"	84
S186064ZS-4	18" x 60" x 64"	95
S187264ZS-4	18" x 72" x 64"	104
S243664ZS-4	24" x 36" x 64"	76
S244864ZS-4	24" x 48" x 64"	88
S246064ZS-4	24" x 60" x 64"	108
S247264ZS-4	24" x 72" x 64"	128

72" High Units

MODEL	SIZE (D x L x H)	SHIP WEIGHT (LBS.)
S183672ZS-4	18" x 36" x 72"	64
S184872ZS-4	18" x 48" x 72"	74
S186072ZS-4	18" x 60" x 72"	94
S187272ZS-4	18" x 72" x 72"	106
S243672ZS-4	24" x 36" x 72"	78
S244872ZS-4	24" x 48" x 72"	90
S246072ZS-4	24" x 60" x 72"	110
S247272ZS-4	24" x 72" x 72"	130

84" High Units

MODEL	SIZE (D x L x H)	SHIP WEIGHT (LBS.)
S183684ZS-4	18" x 36" x 84"	66
S184884ZS-4	18" x 48" x 84"	82
S186084ZS-4	18" x 60" x 84"	94
S187284ZS-4	18" x 72" x 84"	108
S243684ZS-4	24" x 36" x 84"	76
S244884ZS-4	24" x 48" x 84"	96
S246084ZS-4	24" x 60" x 84"	114
S247284ZS-4	24" x 72" x 84"	130

Add-On Units: Each kit includes (4) shelves, (16) collets, (2) posts, (2) feet, and (8) s-hooks.
 {S-hooks are used to connect the sides of the shelves without legs to the starter unit.}

54" High Units

MODEL	SIZE (D x L x H)	SHIP WEIGHT (LBS.)
S183654ZA-4	18" x 36" x 54"	54
S184854ZA-4	18" x 48" x 54"	66
S186054ZA-4	18" x 60" x 54"	86
S187254ZA-4	18" x 72" x 54"	98
S243654ZA-4	24" x 36" x 54"	70
S244854ZA-4	24" x 48" x 54"	82
S246054ZA-4	24" x 60" x 54"	102
S247254ZA-4	24" x 72" x 54"	122

64" High Units

MODEL	SIZE (D x L x H)	SHIP WEIGHT (LBS.)
S183664ZA-4	18" x 36" x 64"	56
S184864ZA-4	18" x 48" x 64"	68
S186064ZA-4	18" x 60" x 64"	88
S187264ZA-4	18" x 72" x 64"	100
S243664ZA-4	24" x 36" x 64"	72
S244864ZA-4	24" x 48" x 64"	84
S246064ZA-4	24" x 60" x 64"	104
S247264ZA-4	24" x 72" x 64"	124

72" High Units

MODEL	SIZE (D x L x H)	SHIP WEIGHT (LBS.)
S183672ZA-4	18" x 36" x 72"	56
S184872ZA-4	18" x 48" x 72"	68
S186072ZA-4	18" x 60" x 72"	88
S187272ZA-4	18" x 72" x 72"	100
S243672ZA-4	24" x 36" x 72"	72
S244872ZA-4	24" x 48" x 72"	84
S246072ZA-4	24" x 60" x 72"	104
S247272ZA-4	24" x 72" x 72"	124

84" High Units

MODEL	SIZE (D x L x H)	SHIP WEIGHT (LBS.)
S183684ZA-4	18" x 36" x 84"	58
S184884ZA-4	18" x 48" x 84"	70
S186084ZA-4	18" x 60" x 84"	90
S187284ZA-4	18" x 72" x 84"	102
S243684ZA-4	24" x 36" x 84"	74
S244884ZA-4	24" x 48" x 84"	86
S246084ZA-4	24" x 60" x 84"	106
S247284ZA-4	24" x 72" x 84"	126

SHELVING UNIT COMPONENT PARTS

COMPONENT SHELVES

MODEL	SHELF SIZE (D x L)	SHIP WEIGHT (LBS.)
S1836Z	18" x 36"	11
S1848Z	18" x 48"	14
S1860Z	18" x 60"	19
S1872Z	18" x 72"	22
S2436Z	24" x 36"	15
S2448Z	24" x 48"	18
S2460Z	24" x 60"	23
S2472Z	24" x 72"	28



COMPONENT POSTS

• Post are double notched on 8" centers for ease of assembly.

MODEL	POST HEIGHT	SHIP WEIGHT (LBS.)
S54Z	54"	5
S64Z	64"	6
S72Z	72"	6
S84Z	84"	7



SQUARE POST 4-SHELF WIRE CARTS

Store and move your heaviest loads.

- **1,200 lb total cart capacity** withstands your heaviest loads
- 5" all swivel casters provide ultimate maneuverability

KIT INCLUDES:

- (4) posts, (4) shelves, (16) collets, (2) swivel casters,
- (2) swivel casters with brakes.

Please call factory for lead times.

54" Carts (60" w/casters)

MODEL	SIZE (D x L x H)	SHIP WEIGHT (LBS.)
S183654ZC-4	18" x 36" x 54"	71
S184854ZC-4	18" x 48" x 54"	87
S186054ZC-4	18" x 60" x 54"	99
S187254ZC-4	18" x 72" x 54"	113
S243654ZC-4	24" x 36" x 54"	81
S244854ZC-4	24" x 48" x 54"	101
S246054ZC-4	24" x 60" x 54"	119
S247254ZC-4	24" x 72" x 54"	135



#S244864ZC-4

64" Carts (70" w/casters)

MODEL	SIZE (D x L x H)	SHIP WEIGHT (LBS.)
S183664ZC-4	18" x 36" x 64"	73
S184864ZC-4	18" x 48" x 64"	89
S186064ZC-4	18" x 60" x 64"	101
S187264ZC-4	18" x 72" x 64"	115
S243664ZC-4	24" x 36" x 64"	83
S244864ZC-4	24" x 48" x 64"	103
S246064ZC-4	24" x 60" x 64"	121
S247264ZC-4	24" x 72" x 64"	137

72" Carts (78" w/casters)

MODEL	SIZE (D x L x H)	SHIP WEIGHT (LBS.)
S183672ZC-4	18" x 36" x 72"	75
S184872ZC-4	18" x 48" x 72"	91
S186072ZC-4	18" x 60" x 72"	103
S187272ZC-4	18" x 72" x 72"	117
S243672ZC-4	24" x 36" x 72"	85
S244872ZC-4	24" x 48" x 72"	105
S246072ZC-4	24" x 60" x 72"	123
S247272ZC-4	24" x 72" x 72"	139

DOLLY BASES

Dolly bases attach to wire units to carry heavier loads more smoothly

- Stainless steel runners and cross members provide extra support
- Includes 2 swivel and 2 swivel/brake 6" x 2" polyurethane plate casters
- Corner bumpers protect walls and doorways

MODEL	SHELF SIZE (D x L)	SHIP WEIGHT (LBS.)
RDB61836	18" x 36"	35
RDB61848	18" x 48"	41
RDB61860	18" x 60"	47
RDB61872	18" x 72"	53
RDB62436	24" x 36"	37
RDB62448	24" x 48"	43
RDB62460	24" x 60"	49
RDB62472	24" x 72"	55



SQUARE POST 3-SIDED CARTS

Protect your heaviest cargo with this wire cart's secure mesh panels.

- **1,200 lb total cart capacity** withstands your heaviest loads
- 5" all swivel casters provide ultimate maneuverability
- Mesh side and back panels (largest opening is 3" x 3") allow safe handling of product during transit. Panels install and remove easily by hooking into the top and bottom shelf.

KIT INCLUDES:

- (4) posts, (4) shelves, (16) collets, (2) swivel casters, (2) swivel casters with brakes and correct size and number of enclosure panels as indicated in the chart below.

Please call factory for lead times.

64" CARTS (70" W/CASTERS)

MODEL	SIZE (D x L x H)	SHIP WEIGHT (LBS.)
S183664ZTS-4	18" x 36" x 64"	98
S184864ZTS-4	18" x 48" x 64"	108
S186064ZTS-4	18" x 60" x 64"	120
S187264ZTS-4	18" x 72" x 64"	138
S243664ZTS-4	24" x 36" x 64"	100
S244864ZTS-4	24" x 48" x 64"	110
S246064ZTS-4	24" x 60" x 64"	130
S247264ZTS-4	24" x 72" x 64"	138

72" CARTS (78" W/CASTERS)

MODEL	SIZE (D x L x H)	SHIP WEIGHT (LBS.)
S183672ZTS-4	18" x 36" x 72"	112
S184872ZTS-4	18" x 48" x 72"	118
S186072ZTS-4	18" x 60" x 72"	128
S187272ZTS-4	18" x 72" x 72"	138
S243672ZTS-4	24" x 36" x 72"	120
S244872ZTS-4	24" x 48" x 72"	125
S246072ZTS-4	24" x 60" x 72"	130
S247272ZTS-4	24" x 72" x 72"	140



POST-ATTACHED ENCLOSURE PANELS

Convert open shelving to 3-sided enclosed units

Locate cart dimensions and then order quantities shown of each panel model number.

CART D x L x H	Panel Model No.				
	SEP1864Z	SEP2464Z	SEP3664Z	SEP4864Z	SEP6064Z
18 x 36 x 70	2		1		
18 x 48 x 70	2			1	
18 x 60 x 70	2				1
24 x 36 x 70		2	1		
24 x 48 x 70		2		1	
24 x 60 x 70		2			1
Panel Wt./Ea. (LBS.)	9	13	16	24	32

CART D x L x H	Panel Model No.				
	SEP1872Z	SEP2472Z	SEP3672Z	SEP4872Z	SEP6072Z
18 x 36 x 78	2		1		
18 x 48 x 78	2			1	
18 x 60 x 78	2				1
24 x 36 x 78		2	1		
24 x 48 x 78		2		1	
24 x 60 x 78		2			1
Panel Wt./Ea. (LBS.)	11	15	18	26	34



STANDARD PRODUCTS
SHIP IN **3** DAYS
OR LESS

NEW!

SQUARE POST WIRE SECURITY CARTS

Securely stores and transports your valuable items

- 1,200 lb total cart capacity withstands your heaviest loads
- 5" casters provide ultimate maneuverability
- Wire 2.5" x 2.5" mesh construction provides easy visibility of contents
- Doors open 270° for easy access
- Padlock hasp on reinforced door frame

KIT INCLUDES:

(4) posts, (2) shelves, (8) collets, (2) swivel casters, (2) swivel casters with brakes, correct size security cage according to the chart below and appropriate assembly hardware.

Padlock is NOT included

Can purchase additional shelves separately

MODEL	SIZE (D x L x H)	SHIP WEIGHT (LBS)
S244864ZSEC-2	24" X 48" X 70"	117
S246064ZSEC-2	24" X 60" X 70"	134

NEW!



Please call factory for lead times.

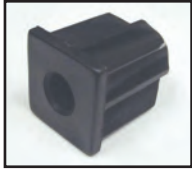
SECURITY CAGES

Convert open shelving units to security cages

- Locate cart dimensions and order corresponding cage

MODEL	SIZE (D x L x H)	SHIP WEIGHT (LBS)
SC244864	24" X 48" X 63"	45
SC246064	24" X 60" X 63"	52





#SINSERT



#SFOOT

FOOT COMPONENTS

MODEL	DESCRIPTION
SINSERT	POST INSERT
SFOOT	INCLUDES INSERT AND BOLT

S HOOK

- For use with add-on shelving units. Use (2) per shelf to replace 2 posts in continuous shelving configurations



MODEL
SSHOOKZ

POST CLAMP

- Used to clamp two separate units together



MODEL
SPCLAMP

STEM CASTERS

MODEL	WHEEL DIMENSIONS	CAPACITY (LBS.)	SHIP WEIGHT (LBS.)	TYPE	TREAD
SP5S	5" X 1 1/4"	300	3	Swivel	Polyurethane
SP5R	5" X 1 1/4"	300	3	Rigid	Polyurethane
SP5BL	5" X 1 1/4"	300	3	Swivel/Brake	Polyurethane
SDB-3	3 1/2" dia Donut Bumper	—	1	—	—



SHELF DIVIDERS

MODEL	SIZE (H X L)	SHIP WEIGHT (LBS.)
SD18Z	8" x 18"	1
SD24Z	8" x 24"	1



#SD18Z

SIDE & BACK LEDGES

MODEL	SIZE (H X L)	SHIP WEIGHT (LBS.)
SL18-4Z	4" x 18"	1
SL24-4Z	4" x 24"	1
SL36-4Z	4" x 36"	2
SL48-4Z	4" x 48"	2
SL60-4Z	4" x 60"	3
SL72-4Z	4" x 72"	3



#SL18-4Z

STAINLESS STEEL SHELF CAP

Converts your wire shelf into a solid surface.

- Fits easily over wire shelves
- Continuous flat surface prevents supplies from slipping through gaps
- Stainless steel is easy to sanitize and extra durable

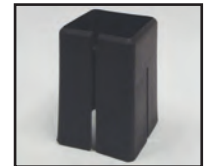


MODEL	SIZE (D X L)	SHIP WEIGHT (LBS.)
SSSCAP1836	18" x 36"	11
SSSCAP1848	18" x 48"	14
SSSCAP1860	18" x 60"	16.5
SSSCAP1872	18" x 72"	19
SSSCAP2436	24" x 36"	13.5
SSSCAP2448	24" x 48"	17
SSSCAP2460	24" x 60"	20
SSSCAP2472	24" x 72"	23

SQUARE PLASTIC COLLETS

- Additional collet sleeves attach to posts to position shelves

MODEL
SPSSZ



#SPSSZ

NURSES OFFICE SUPPLY CART

NEW!



MODEL	DESCRIPTION	STEP DIMENSIONS			CASE WEIGHT (LBS.)
		W	D	H	
BV02	1- 3" 2- 6" 1-9" Panel	30"	18-1/2"	34-1/2"	136

STEP STOOLS

NEW!

- 1" chrome-plated steel construction is durable and easy to clean
- Slip resistant rubber mat adds safety
- Black rubber tips for stability

For Model #4908:

STANDARD PRODUCTS SHIP IN 7 DAYS OR LESS

For Model #4910:

STANDARD PRODUCTS SHIP IN 5 DAYS OR LESS



MODEL	DESCRIPTION	STEP DIMENSIONS			CASE WEIGHT (LBS.)	FedEx UPS
		W	D	H		
4908	without handrail	11"	14"	9"	9	OK
4910	with 7/8" chrome-plated steel handrail*	11"	14"	9"	10	OK

*Handrail height: 37 1/2" to floor

WIRE PLATFORMS

Wire platforms help make items stored on the floor more accessible and less subject to damage.

Easy to clean beneath. All models have 8" round posts with feet. Maximum weight capacity is 800 lbs. for 36" and 48" long models and 600 lbs. for 60" long models.



MODEL	SIZE (W X L X D)	SHIP WEIGHT (LBS.)
R18368WP	18" x 36" x 8"	12
R18488WP	18" x 48" x 8"	14
R18608WP	18" x 60" x 8"	18
R24368WP	24" x 36" x 8"	15
R24488WP	24" x 48" x 8"	18
R24608WP	24" x 60" x 8"	23

STAINLESS STEEL WALL MOUNTED SHELF

The wall mount stainless steel shelf is great for keeping frequently used items close at hand.

Easy to install and keep clean. The 48" and 60" models come with a center support system for better stability.



MODEL	SIZE (W X L X D)	SHIP WEIGHT (LBS.)
SSWMS8X36	8" x 36" x 7.5"	12
SSWMS8X48	8" x 48" x 7.5"	12
SSWMS12X36	12" x 36" x 10"	12
SSWMS12X48	12" x 48" x 10"	12
SSWMS12X60	12" x 60" x 10"	17
SSWMS16X36	16" x 36" x 12"	17
SSWMS16X48	16" x 48" x 12"	20
SSWMS16X60	16" x 60" x 12"	23

PURPOSE CART WITH WIRE BASKETS

The perfect cart for transporting a variety of supplies

- Strong chrome-plated steel frame is easy to clean
- 3" rubber wheel, ball bearing casters allows smooth rolling
- Convenient 37 1/2" height for easy loading and unloading
- Coated steel basket supports are durable
- 50 lb capacity
- No assembly required

- Holds 6" or 12" wire baskets on both levels (order baskets separately)

FREIGHT CLASS 70 STANDARD PRODUCTS SHIP IN 3 DAYS OR LESS



#4650

MODEL	SIZE (W X L X D)	SHIP WEIGHT (LBS.)
4650	19 1/2" x 29" x 37 1/2"	24
4652	6" Basket (14 1/4 x 24 1/2 x 6)	10
4653	12" Basket (14 1/4 x 24 1/4 x 12)	10

STAINLESS STEEL EQUIPMENT STANDS

- Versatile mobile equipment stands come in six different models. Available with no drawers, one drawer, two drawers, and in two different carrying capacities.
- Ideal for transporting equipment used in many different areas along with extra supplies in the drawers.
- Stainless steel construction allows for easy sanitation.
- Stands include rubber casters, 3 1/2" dia. for 300 lb. capacity and 4" for 500 lb. capacity.
- One- and two-drawer models have optional locks available. Please contact your customer service representative for additional information.
- Locking drawers available.

All except 474 shp via 



#356




#358



#359



#474

MODEL	WEIGHT CAPACITY	# OF DRAWERS	# OF SHELVES	SHELF CLEARANCE	DIMENSIONS			CASTER TYPE & SIZE	SHIP WEIGHT (LBS.)	FedEx 
					W	D	H			
359	300	0	3	10-3/4"	16-3/4"	18-3/4"	30-1/8"	all swivel - 3-1/2" dia.	25	OK
469	500	0	3	10-3/4"	16-3/4"	18-3/4"	31"	all swivel - 4" dia.	33	OK
356	300	1	3	8-1/8"	16-3/4"	18-3/4"	30-1/8"	all swivel - 3-1/2" dia.	36	OK
466	500	1	3	8-1/8"	16-3/4"	18-3/4"	31"	all swivel - 4" dia.	50	OK
358	300	2	2	17-1/8"	16-3/4"	18-3/4"	35"	all swivel - 3-1/2" dia.	44	OK
474	500	2	3	10"	20-1/8"	36-3/8"	35"	all swivel - 4" dia.	76	NA

STAINLESS STEEL INSTRUMENT TABLES

These extremely durable tables will serve you well for years to come.

- 18-gauge stainless steel top (and shelf if provided) is easy to clean and sanitize
- 1" square 16-gauge stainless steel legs for superior strength
- 18-gauge reinforcements supply extra security for larger models
- All welded construction increases durability and makes surface smoother for cleaning
- 3" locking casters ensure table is stationary when needed
- Nesting tables save space

SPECIFICATIONS

- Top shelves turned down 1" and hemmed back 3/4" around bottom
- Distance between top shelf and bottom shelf is 16"
- Distance from H-Brace to floor is 9 1/8"



Nesting Tables



#8394



#8353

MODEL	DESCRIPTION	DIMENSIONS			SHIP WEIGHT (LBS.)
		W	L	H	
8353	Instrument Table w/ Shelf	16"	20"	34"	40
8354	Instrument Table w/ Shelf	16"	30"	34"	44
8355	Instrument Table w/ Shelf	18"	33"	34"	52
8356	Instrument Table w/ Shelf	20"	36"	34"	54
8357	Instrument Table w/ Shelf	24"	36"	34"	56
8358	Instrument Table w/ Shelf	20"	48"	34"	66
8359	Instrument Table w/ Shelf	24"	48"	34"	70
8398	Instrument Table w/ Shelf	24"	60"	34"	82
8399	Instrument Table w/ Shelf	24"	72"	34"	103
8386	H-Brace Instrument Table	16"	20"	34"	45
8387	H-Brace Instrument Table	16"	30"	34"	35
8388	H-Brace Instrument Table	18"	33"	34"	40
8390	H-Brace Instrument Table	20"	36"	34"	43
8391	H-Brace Instrument Table	24"	36"	34"	43
8392	H-Brace Instrument Table	20"	48"	34"	47
8393	H-Brace Instrument Table	24"	48"	34"	56
8394	H-Brace Instrument Table	24"	60"	34"	64
8395	H-Brace Instrument Table	24"	72"	34"	71
8380	Nesting Table	14"	28"	32"	38
8381	Nesting Table	16"	32"	34"	38
8382	Nesting Table	18"	36"	36"	45
8383	Nesting Table	20"	40"	38"	49
8384	Nesting Table	22"	44"	40"	52
8385	Nesting Table	24"	48"	42"	38
8389	Set - All 6				260



LIFT TABLES

Avoid injuries and make work easier.

Heavy hauling and lifting are a snap with mobile lift tables. Extra-load casters facilitate movement and the hydraulic pump system is easy to use.

- Lift and transport design.
- Easy foot pump hydraulic lift.
- Convenient lift release lever on push handle.
- Polyurethane fixed & steer wheels.
- Dual brake system on each model. Brake casters secure unit during loading/unloading.
- Upper lifting limit bypass prevents damage to pump.
- Fold-down handle (ELT330 / ELT660 / ELT1100).



#ELT330



#ELT660



#ELT770



#ELT1100



#ELT1650

MODEL	WEIGHT CAPACITY (LBS.)	OVERALL DIMENSIONS (L X W X H)	PLATFORM DIMENSIONS (W X D)	RAISED PLATFORM HEIGHT	LOWERED PLATFORM HEIGHT	CASTERS	SHIP WEIGHT (LBS.)
ELT330	330	35" x 17 3/4" x 38"	17 3/4" x 27 1/2"	29 1/2"	8 3/4"	4"	101
ELT660	660	41" x 19 3/4" x 39"	19 3/4" x 32"	35 1/2"	11"	5"	165
ELT770	770	46" x 19 3/4" x 39"	19 3/4" x 36"	51 1/2"	13 1/2"	5"	265
ELT1100	1100	42" x 19 3/4" x 38"	19 3/4" x 32"	35 1/2"	8 3/4"	5"	187
ELT1650	1650	52" x 22 1/2" x 39"	20" x 39 1/4"	40"	16 1/4"	6"	253

OPEN SHELF CARTS

Versatile open shelf utility carts transport multiple loads safely.

- Rugged fully welded and economical KD models available.
- Durable epoxy powder coat finish.
- Integrated push handle.
- Upturned shelf edges prevent loads from falling off.
- Non-marking tires.
- KD (knocked down) models require assembly.



#SC1830-3

WELDED SHELF CARTS



MODEL	WEIGHT CAPACITY (LBS.)	OVERALL DIMENSIONS (W X L X H)	SHELF DIMENSIONS (W X L)	# OF SHELVES	SHELF HEIGHTS	CASTERS	SHIP WEIGHT (LBS.)
SC1830-2	1000	34" x 18" x 41"	18 x 30"	2	8" / 40"	1 1/2" x 5" (2 fixed; 2 swivel)	70
SC1830-3	1000	34" x 18" x 41"	18" x 30"	3	8" / 24" / 40"	1 1/2" x 5" (2 fixed; 2 swivel)	80
SC2436-2	1000	40" x 24" x 41"	24" x 36"	2	8" / 40"	1 1/2" x 5" (2 fixed; 2 swivel)	100
SC2436-3	1000	40" x 24" x 41"	24" x 36"	3	8" / 24" / 40"	1 1/2" x 5" (2 fixed; 2 swivel)	110

PLASTIC BED PLATFORM TRUCKS

- Corrosion-free, sturdy polyethylene bed over a steel frame.
- Textured deck is non-slip.
- Model PPTS3060 includes a plastic mesh flip-up overshell (22 1/2' x 27 1/2" x 3" D), mounted to the push handle frame.



#PPT2448



#PPT3060



#PPTS3060 features flip-top shelf

MODEL	WEIGHT CAPACITY (LBS.)	DIMENSIONS (W X L X H)	PLATFORM HEIGHT	BED SIZE (W X L)	CASTERS	SHIP WEIGHT (LBS.)
PPT2448	2000	24" x 56" x 27"	10"	24" x 48"	2" x 6" (2 fixed; 2 swivel)	56
PPT3060	2500	30" x 68" x 37"	10"	30" x 60"	2" x 6" (2 fixed; 4 swivel)	98
PPTS3060	2500	30" x 70" x 36"	10"	30" x 60"	2" x 6" (2 fixed; 4 swivel)	125

STEEL BED TRUCKS

Choose economical steel or durable, corrosion-free aluminum.

- Aluminum models include perimeter bumper.
- Steel models have durable epoxy powder coat finish.
- Non-marking polyurethane 8" casters (2 ea. rigid, 2 ea. swivel).
- Non-slip tread plate deck.
- Wheel assembly required.



#SPT2448

STEEL BED PLATFORM TRUCKS

MODEL	WEIGHT CAPACITY (LBS.)	DIMENSIONS (W X L X H)	PLATFORM HEIGHT	BED SIZE (W X L)	CASTERS	SHIP WEIGHT (LBS.)
SPT2448	1200	24" x 52" x 27"	10"	24" x 48"	2" x 6" (2 fixed; 2 swivel)	74
SPT3060	1200	30" x 64" x 37"	10"	30" x 60"	2" x 6" (2 fixed; 2 swivel)	100

SHOP DESKS

Streamline your manufacturing and shipping/receiving areas with these well designed desks.

- Choose from open base, enclosed base or space saving wall mount models.
- Durable gray epoxy powder coat finish.
- Bolted construction; shipped unassembled.
- Key lock drawer.
- Locking doors on cabinet model.



MODEL	STYLE	WRITING SURFACE HEIGHT	W X D X H	# OF COMPARTMENTS	SHIP WT. (LBS.)
CSSD	CABINET	43 3/4"	39" X 30" X 52 1/2"	4	125
OSSD	OPEN	45 1/4"	34 1/2" X 30" X 52 1/2"	4 (TOP LOCKING)	75
WMSSD	WALL MOUNT		24" X 24" X 12"	3 (LOCKING)	18

HAND TRUCKS

Model HT1766 Appliance Hand Truck features cushioned rails to protect load from scratches. Also includes an appliance belt and crank to move loads up to 1,200 lbs!

Model AHT90 is an aluminum hand truck with collapsible loop handle design that locks into expanded or collapsed position for compact storage. A great little hand truck, perfect for hundreds of uses!



MODEL	STYLE	NOSEPLATE	UPRIGHT	LOWERED	BED HT.	BED SIZE (LOWERED)	CAP.	SHIP WT. (LBS.)
AHT90	ALUMINUM	9.5" X 14"	11.5" X 43"	11.5" X 29.5"			200 LBS.	13
HT1766	STEEL	5.25" X 24"	17" X 8" X 66"				1200 LBS.	70

Lakeside’s Durability Index indicates how the cart will perform over time doing the tasks it was designed to do – not just the amount of weight the cart can hold.

Each cart within a “Durability Index” category is designed and constructed to do typical tasks in typical environmental situations. These incorporate the amount of weight the shelves will hold, the flooring types the cart is pushed over and the amount of time per day the cart is used.

The intended use of the cart, floor surfaces and hours of operation need to be considered to purchase the right cart for the job. In other words, the best value cart. All Lakeside utility carts have the Durability Index clearly stated to help you choose the right cart for the job.

	IDEAL WORKING ENVIRONMENTS / TASKS	IDEAL FLOOR SURFACES	IDEAL DAILY USAGE AMOUNT
1 STANDARD DUTY 300 LBS 135 KG	<ul style="list-style-type: none"> • Foodservice • Healthcare • Transporting light loads - UP TO 300 LBS. 	<ul style="list-style-type: none"> • Smooth vinyl • Vinyl tile floor • Smooth indoor concrete 	NO MORE THAN 3 HOURS PER DAY
2 MEDIUM DUTY 500 LBS 230 KG	<ul style="list-style-type: none"> • Foodservice, Dining Area, Kitchen • Healthcare • Warehouse, Receiving • Transporting moderate loads - UP TO 500 LBS. 	<ul style="list-style-type: none"> • Smooth vinyl • Ceramic tile floor • Smooth indoor concrete 	NO MORE THAN 4-9 HOURS PER DAY
3 HEAVY DUTY 700 LBS 320 KG	<ul style="list-style-type: none"> • Receiving goods • Transporting loads - UP TO 700 LBS. 	<ul style="list-style-type: none"> • Vinyl and tile floors • Carpet • Indoor concrete 	NO MORE THAN 9-12 HOURS PER DAY
4 TOUGH TRANSPORT 1000 LBS 450 KG	<ul style="list-style-type: none"> • Receiving Dock and storage room use • Transporting loads - UP TO 1000 LBS. 	<ul style="list-style-type: none"> • Uneven tile floors • Carpets • Outdoor concrete • Thresholds, elevators 	10-18 HOURS PER DAY
5 EXTREME DUTY 1500 LBS 680 KG	<ul style="list-style-type: none"> • Casinos and Correctional facilities • Receiving dock and store room/warehouse • Transporting loads - UP TO 1500 LBS. 	<ul style="list-style-type: none"> • Uneven tile floors • Carpets • Outdoor concrete, parking lots • Thresholds, elevators 	CAN BE IN USE 24 HOURS PER DAY

Selecting the Right Cart for Your Operation

1. Answer these questions to help you determine the cart you need for your operation.

- What will this cart typically transport?
- What types of floor surfaces will the cart encounter on a daily basis?
- How many hours per day will the cart be used?

2. Complete the Load Capacity Calculator.

Our calculator lists typical working situations that affect the longevity of a cart. The intended use of the cart, floor surfaces and hours of operation need to be considered to purchase the right cart for the job – one that will provide years of service, not just months, and the best value.

The calculator assigns number values that relate to specific situations. Finish the calculator by totaling the column. This gives you a number that coincides with the load capacity needed for the carts in your establishment. All Lakeside carts have the load capacity clearly stated to help you choose the right cart for the job.

3. Choose the right style of cart (see photos below).

- Are work related injuries due to pushing heavy loads or repetitive loading and unloading a concern?
- Will the cart be used in a small or crowded kitchen environment?
- Do you want to secure items on the shelves during transport?

4. Cart design criteria determines the durability of a cart over time.

- Gauge of the stainless steel. (The lower the number, the stronger the steel.)
- How the stainless steel shelves are hemmed.
- Type of fastening used.
- Frame design.
- Caster size and wheel material.

Load Capacity Calculator

What will this cart typically transport (estimated load weight)?

- 100 Begin the calculator at 100 lbs., even if the weight is less than 100 lbs.
- Estimate the average weight per shelf of the loads the cart will be expected to transport, and then multiply by the number of shelves.
- Add 100 if the load will be dropped onto the top shelf from a height more than 18".
- Add 100 if the shelves are longer than 33".

What types of floor surfaces will the cart encounter on a daily basis? (Add all that apply)

- 0 If the floor surfaces are only smooth vinyl tile or smooth indoor concrete, no additional.
- Ceramic tile or carpet, add 100 to the weight.
- Thresholds or uneven outdoor surfaces, add 300 to weight.

How many hours per day will the cart be used? (Choose only one.)

- 0 If the cart is used less than 3 hours per day (light use), no additional.
- 4-9 hours, add 100 (moderate use).
- 10-15 hours, add 200 (heavy use).
- More than 16 hours, add 300 (harsh environment).

TOTAL LOAD CAPACITY REQUIRED

Total load capacity is determined by assuming the load is distributed evenly on all shelves.

(This calculator can also be found on our web site: www.eLakeside.com)

5. Lakeside carts undergo load and durability tests to determine their rating.



LOAD TEST – What strength or load capacity is needed to do the job over time? We test strength by increasing the weight on the top shelf. We keep adding weight until the instrument below the shelf detects a bend. When the shelf permanent deflection, the rating is determined.



DURABILITY TEST – What type of surfaces will the cart encounter? Rough or uneven surfaces will require increased load capacity and large casters/wheels. We test our carts by mechanically pushing them over thresholds of varying heights repeatedly, while under load, until failure.

Cart Styles



Traditional Utility Carts



Guard Rail Carts – Front rails on all shelves prevent items from falling during transport.



Deep Shelf Carts – 2 1/2" (64) deep shelves hold items securely in place.



Handler Series™ – If maneuvering in tight spaces is a priority, the Handler Series, with a vertical one-piece handle and all swivel casters is a smart choice.



Ergo-One® Series – If work related injuries are an issue, or a worker uses the cart for an extended period of time, select a cart with an ergonomic design.

STANDARD DUTY UTILITY CARTS

- Durable, unitized electronically-welded stainless steel angle leg design.
- Reinforced, hemmed front on 22-gauge stainless steel shelves adds strength where it is needed.
- 20-gauge stainless steel legs.
- Sound deadening panels under shelves restrict vibration and noise.
- Bumpers on legs and handles protect walls and furniture.
- Cleans and sanitizes easily.



1 STANDARD DUTY
300 LBS | 135 KG

FREIGHT CLASS **125**

STANDARD PRODUCTS **SHIP IN 3 DAYS OR LESS**

MODEL	SHELF DESCRIPTION			OVERALL SIZE			LAKE-GLIDE® CASTERS		SHIP WEIGHT		FedEx UPS
	# OF	SIZE (W X L)	CLEARANCE	W	L	H	TYPE	DIA.	LBS.	(KG)	
311	3	15 1/2" x 24" (394 x 610)	11 3/4" (298)	16 1/4" (413)	27 1/2" (699)	32 1/8" (816)	All swivel	3 1/2" (89)	29	(13.2)	OK
322	3	18" x 27" (457 x 686)	12 1/4" (311)	18 3/8" (467)	30 3/4" (781)	33" (838)	All swivel	3 1/2" (89)	32	(14.5)	NA
316*	3	15 1/2" x 24" (394 x 610)	9 1/4" (235)	16 1/4" (413)	27 1/2" (699)	33 3/8" (848)	All swivel	3 1/2" (89)	33	(14.9)	OK

*Includes Guard Rail on open edge of top and middle shelf, all 4 sides of bottom shelf. Options: 4" (102) 2 ea. swivel w/brake casters, see page 42. Perimeter strip bumper, see page 42. Accessories include: Detachable silverware and waste boxes, see page 42. Replacements: Lake-Glide® casters and wheels available as replacements for all Lakeside carts.

MEDIUM DUTY UTILITY CARTS

- Unitized electronically-welded angle leg frame. Legs are 16-gauge stainless.
- 20-gauge stainless steel reinforced shelves for heavy loads and load drops.
- Extra load casters with cushion tread non-marking wheels.
- Protective bumpers on legs and handle safeguard furnishings.
- Sound deadening panels under shelves restrict vibration and noise.

Options (see page 38):

- Perimeter and strip bumper.
- 4" (102) or 5" (127) 2 ea. swivel with brake casters.
- 8" (203) all swivel casters.
- 5" (127) cushion tread casters.
- Models 444 and 459 Hi-Temp nylon casters, up to 400° F (204° C).
- 5" (127) 2 ea. fixed, 2 ea. swivel casters available.
- Sta-Clean® vinyl covers.



Optional accessories include detachable plastic silverware and waste boxes.



#411

2 MEDIUM DUTY
500 LBS | 230 KG

FREIGHT CLASS **125**

STANDARD PRODUCTS **SHIP IN 3 DAYS OR LESS**

MODEL	SHELF DESCRIPTION			OVERALL SIZE			LAKE-GLIDE® CASTERS		SHIP WEIGHT		FedEx UPS
	# OF	SIZE (W X L)	CLEARANCE	W	L	H	TYPE	DIA.	LBS.	(KG)	
411	3	15 1/2" x 24" (394 x 610)	11 1/2" (292)	16 3/4" (425)	27 5/8" (702)	32" (813)	All swivel	4" (102)	39	(17.7)	OK
422	3	18" x 27" (457 x 686)	11 1/2" (292)	19" (483)	31" (787)	32" (813)	All swivel	4" (102)	42	(19.1)	NA
444	3	21" x 35" (533 x 889)	13 1/8" (333)	22 3/8" (568)	39 1/4" (997)	37 1/4" (946)	All swivel No-Mark®, cushion tread	5" (127)	68	(30.8)	NA
459	3	21" x 49" (533 x 1245)	13 1/8" (333)	22 3/8" (568)	54 1/8" (1374)	37 1/4" (946)	2 swivel 2 fixed No-Mark®, cushion tread	5" (127) 5" (127)	88	(39.9)	NA

Measurements in () denote metric millimeters, unless otherwise specified.

HEAVY DUTY U-FRAME UTILITY CARTS

- Angled "U" shaped steel frame and electronic welding.
- Rugged 18-gauge reinforced stainless steel shelves are stain and rust resistant; steam cleans for your convenience.
- Extra load casters with cushion tread non-marking wheels.
- Leg and handle bumpers protect walls and furniture.

3 HEAVY DUTY
700 LBS | 320 KG



MODEL	# OF	SHELF DESCRIPTION		OVERALL SIZE			LAKE-GLIDE® CASTERS*		SHIP WEIGHT	
		SIZE (W X L)	CLEARANCE	W	L	H	TYPE	DIA.	LBS.	(KG)
710	2	15 1/2" x 24" (394 x 610)	19" (483)	16 1/4" (413)	30" (762)	34 1/4" (870)	2-swivel 2-fixed	5" (127) 8" (203)	49	(22.2)
711	3	15 1/2" x 24" (394 x 610)	10" (254)	16 1/4" (413)	30" (762)	34 1/4" (870)	2-swivel 2-fixed	5" (127) 8" (203)	57	(25.9)
721	2	18" x 27" (457 x 686)	19" (483)	19 3/8" (492)	32 5/8" (829)	34 1/2" (876)	2-swivel 2-fixed	5" (127) 8" (203)	53	(24)
722	3	18" x 27" (457 x 686)	10" (254)	19 3/8" (492)	32 5/8" (829)	34 1/2" (876)	2-swivel 2-fixed	5" (127) 8" (203)	63	(28.6)
743	2	21" x 33" (533 x 838)	21" (533)	22 3/8" (568)	38 5/8" (981)	37 1/8" (943)	2-swivel 2-fixed	5" (127) 8" (203)	64	(29)
744	3	21" x 33" (533 x 838)	11 3/8" (289)	22 3/8" (568)	38 5/8" (981)	37 1/8" (943)	2-swivel 2-fixed	5" (127) 8" (203)	78	(35.4)
758	2	21" x 49" (533 x 1245)	21" (533)	22 3/8" (568)	54 5/8" (1387)	37" (940)	2-swivel 2-fixed	5" (127) 8" (203)	87	(39.5)
759	3	21" x 49" (533 x 1245)	11 3/8" (289)	22 3/8" (568)	54 5/8" (1387)	37" (940)	2-swivel 2-fixed	5" (127) 8" (203)	108	(49)

TOUGH TRANSPORT U-FRAME UTILITY CARTS

- Angled "U" shaped steel frame and electronic welding.
- All joints are continuous heliarc welded.
- 14-gauge reinforced stainless steel shelves.
- Extra load casters with cushion tread non-marking wheels.
- Stainless steel design resists staining/rusting and is easy to maintain clean and sanitize.

Optional ground and polished joint welds.



MODEL	# OF	SHELF DESCRIPTION		OVERALL SIZE			SHIP WEIGHT	
		SIZE (W X L)	CLEARANCE	W	L	H	LBS.	(KG)
938	2	18" x 27" (457 x 686)	19" (483)	19 3/4" (502)	33" (838)	34 1/4" (870)	66	(29.9)
939	3	18" x 27" (457 x 686)	10" (254)	19 3/4" (502)	33" (838)	34 1/4" (870)	80	(36.3)
943	2	21" x 33" (533 x 838)	21" (533)	22 3/4" (578)	39" (991)	37 3/8" (949)	88	(39.9)
944	3	21" x 33" (533 x 838)	11 3/8" (289)	22 3/4" (578)	39" (991)	37 3/8" (949)	106	(48.1)
947	2	24" x 36" (610 x 914)	21" (533)	25 7/8" (657)	42" (1067)	37 3/8" (949)	106	(48.1)
949	3	24" x 36" (610 x 914)	11 3/8" (289)	25 7/8" (657)	42" (1067)	37 3/8" (949)	130	(59)
953	2	24" x 42" (610 x 1067)	21" (533)	25 3/4" (654)	48" (1219)	37 3/8" (949)	126	(57.1)
954	3	24" x 42" (610 x 1067)	11 3/8" (289)	25 3/4" (654)	48" (1219)	37 3/8" (949)	152	(69)
958	2	21" x 49" (533 x 1245)	21" (533)	22 3/4" (578)	55" (1397)	37" (940)	123	(55.8)
959	3	21" x 49" (533 x 1245)	11 3/8" (289)	22 3/4" (578)	55" (1397)	37" (940)	150	(68)



4 TOUGH TRANSPORT
1000 LBS | 450 KG
FREIGHT CLASS
125

Measurements in () denote metric millimeters, unless otherwise specified. *Lake-Glide® Casters are No-Mark®, cushion tread. Replacements: Lake-Glide casters available for all Lakeside carts. Options: See page 38.

EXTREME DUTY STAINLESS STEEL UTILITY CARTS

Everything about these carts is "Extreme" - from the 1500 lbs. weight capacity, 14-gauge shelves, and full bead welded seams to the extra load casters.



#8840

- 1" square tube frame provides model #8840's superior strength
- Square tubing reinforcement under shelves to withstand heavy objects being dropped on the shelf edge.
- "U" shaped body design with angled stainless steel frame gives model #8820 the Extreme Duty classification.
- All joints are continuous heliarc full bead welded to withstand heavy loads and frequent use.
- Rugged 14-gauge reinforced stainless steel shelves are stain and rust resistant.
- Extra load casters with wide cushion tread non-marking wheels.
- No pry points.
- All stainless steel design resists staining and rusting, cleans and sanitizes easily.

5 EXTREME DUTY
1500 LBS | 680 KG

FREIGHT CLASS **125**

STANDARD PRODUCTS **SHIP IN 10** DAYS OR LESS



Underside of shelves are reinforced with 1" square tubing.

Options include:

- 6" (152) deluxe all swivel casters, no charge.
- Perimeter bumper.
- Security packages, contact factory.
- Sta-Clean® vinyl covers.

MODELS 8840 ONLY:

- Lake-Glide® Extra-Load, No-Mark® polyurethane casters:
8" (203) - 2 ea. swivel, 8" (203) - 2 ea. fixed.

MODEL 8820 ONLY:

- Lake-Glide® Extra-Load, No-Mark® cushion tread casters:
6" (152) - 2 ea. swivel, 8" (203) - 2 ea. fixed.



#8820

MODEL	SHELF DESCRIPTION			OVERALL SIZE			SHIP WEIGHT LBS. (KG)
	# OF	SIZE (W X L)	CLEARANCE	W	L	H	
8840	2	21" x 33"	27"	22"	35"	50 1/8"	117 (53)
		(533 x 838)	(686)	(559)	889	1273)	
8820	2	21" x 33"	24 5/8"	21 1/4"	36 1/2"	37 7/32"	98 (44)
		(533 x 838)	(625)	(540)	927	945)	

Measurements in () denote metric millimeters, unless otherwise specified. Stainless steel shelves: 14-gauge with reinforced top. Replacements: Lake-Glide® casters available as replacements for all Lakeside carts.

MEDIUM DUTY TUBULAR STAINLESS STEEL UTILITY CARTS

- Stainless steel construction for easy sanitation.
- Handle and leg bumpers help protect cart, walls and doorways.
- Integrated push handle allows for easy maneuverability.
- All welded stainless steel construction allows for increased durability and easy sanitation.
- New and improved sound deadening material allows for quieter operation.

2 MEDIUM
DUTY
500 LBS | 230 KG



MODEL	SHELF DESCRIPTION			OVERALL SIZE			LAKE-GLIDE® CASTERS		SHIP WEIGHT		FedEx UPS
	# OF	SIZE (W X L)	CLEARANCE	W	L	H	TYPE	DIA.	LBS.	(KG)	
ALL STAINLESS STEEL											
210	2	15 1/2" x 24" (394 x 610)	18 3/4" (476)	17 1/2" (445)	27" 686	35 3/4" 908	All swivel	4" (102)	31	(14)	NA
211	3	15 1/2" x 24" (394 x 610)	9 1/2" (241)	17 1/2" (445)	27" 686	35 3/4" 908	All swivel	4" (102)	36	(16.3)	NA
221	2	18" x 27" (457 x 686)	18 3/4" (476)	20" (508)	30" 762	35 3/4" 908	All swivel	4" (102)	36	(16.3)	NA
222	3	18" x 27" (457 x 686)	9 1/2" (241)	20" (508)	30" 762	35 3/4" 908	All swivel	4" (102)	43	(19.5)	NA
243	2	21" x 33" (533 x 838)	21 1/2" (546)	22" (559)	36" 914	40 5/8" 1032	All swivel No-Mark®, cushion tread	5" (127)	55	(25)	NA
244	3	21" x 33" (533 x 838)	10 3/4" (273)	22" (559)	36" 914	40 5/8" 1032	All swivel No-Mark®, cushion tread	5" (127)	66	(29.9)	NA
CHROME PLATED LEGS/FRAME											
472	2	15 1/2" x 24" (394 x 610)	18 3/4" (476)	17 1/2" (445)	27" 686	35 3/4" 908	All swivel	4" (102)	32	(14.5)	NA
473	3	15 1/2" x 24" (394 x 610)	9 1/2" (241)	17 1/2" (445)	27" 686	35 3/4" 908	All swivel	4" (102)	37	(16.8)	NA
479	3	15 1/2" x 24" (394 x 610)	9 7/8" (229)	17 1/2" (445)	27" 686	35" 889	All swivel	4" (102)	43	(19.5)	OK KD
489	3	18" x 27" (457 x 686)	9 7/8" (229)	20" (508)	27" 686	35" 889	All swivel	4" (102)	50	(22.7)	OK KD
492	2	21" x 33" (533 x 838)	21 1/2" (229)	23" (584)	36" 914	40 1/8" 1019	All swivel	5" (127)	53	(24)	NA
493	3	21" x 33" (533 x 838)	10 3/4" (273)	23" (584)	36" 914	40 1/8" 1019	All swivel	5" (127)	67	(30.4)	NA
499	3	21" x 33" (533 x 838)	9 7/8" (229)	23" (584)	36" 914	37" 940	All swivel	5" (127)	65	(29.5)	OK KD

OPTIONS: Detachable silverware & waste boxes with adapter bars (fits over tubular handle), see page 38. Round corner bumpers set of four. Lake-Glide® Casters 4" (2 brake) for models 210, 211, 221, 222, 472, 473. Lake-Glide Casters 5" (2 brake) for models 243, 244, 492, 493. Sta-Clean® vinyl covers available. **KD** Denotes knocked down, shipped unassembled.

LINEN SERVICE CARTS

- All-welded stainless steel construction allows for a durable and sanitary option in linen delivery.
- Compact and maneuverable.
- Available in three different shelf sizes to meet your unique linen delivery needs.
- Models 332, 442 and 470 are standard with a nylon cart cover.
- Standard leg and handle bumpers protect cart, walls and doorways from damage.

MODEL*	# OF SHELVES	CASTER TYPE & DIAMETER		W	L	H	SHIP WEIGHT (LBS.)
332	4	All Swivel	3 1/2"	16 1/4"	27 1/2"	46"	37
333	4	2 Swivel/2 Fixed	3 1/2"	16 1/4"	27 1/2"	46"	37
442	4	2 Swivel/2 Fixed	5"	22 1/4"	36 3/8"	45 1/2"	75
443	4	2 Swivel/2 Fixed	5"	22 1/4"	36 3/8"	45 1/2"	75
470	4	2 Swivel/2 Fixed	5"	22 1/4"	51 3/8"	45 1/2"	150
471	4	2 Swivel/2 Fixed	5"	22 1/4"	51 3/8"	45 1/2"	150

*300 series models have 300 lbs. capacity; 400 series models have 500 lbs. capacity



#332
Shown with standard nylon cover

CART COVERS (FOR STAINLESS STEEL CARTS)



Nylon Cart Covers:

- Protects linens from airborne dust and dirt, while allowing for easy accessibility to the contents of the cart.
- Standard covers are royal blue, 200 denier nylon oxford.
- Urethane coated, fluid repellent, flame retardant and machine washable.
- Custom colors and personalization available.
- Velcro closures for easy access.



Clear Vinyl Cart Covers

- 12 mil, box-type construction without flap.

STAINLESS STEEL CART MODELS (For wire cart covers, see page 8.)	NYLON MODEL #	CLEAR VINYL MODEL #
210, 211, 311, 316, 411, 472, 473, 479, 711	19550	09520
221, 222, 322, 422, 479, 526, 622, 626, 822, 2000	19560	09502
243, 244, 492, 493, 499	19640	09503
351, 352, 353, 354	19770	—
355, 357	19780	—
332, 333	09563	—
356, 359, 466, 469	19740	—
358	19750	—
433, 448, 745, 746	19790	—
442, 443, 445, 446	19590	—
444, 644, 729, 730, 743, 744, 844, 943, 944	19570	09503
449, 451, 733, 748	19800	—
459, 758, 759, 958, 959	19630	—
460, 461, 462, 463, 760, 761	19810	—
464, 465, 762, 763	19820	—
470, 471	19600	—
474	19760	—
610, 615, 810, 815	19720	09520
646	19730	09503
721, 722, 725, 726, 938, 939	19650	09502
947, 949	19660	—
953, 954	19670	—
2001	19620	—
2300	19610	09520
6600, 6800	19680	—
6610, 6810	19690	—
6820	19700	—
6830	19710	—

STANDARD DUTY STAIN-RESISTANT PLASTIC UTILITY CARTS

- Durable impact-resistant Polyethylene construction.
- Ideal for foodservice, healthcare, laboratory and material management.
- Shelves precision molded from high density polyethylene to resist stains and odors.
- Beige color blends with all decors.
- Shipped unassembled.

1 STANDARD DUTY
300 LBS | 135 KG

FREIGHT CLASS 70

STANDARD PRODUCTS SHIP IN 3 DAYS OR LESS



#2000

MODEL	SHELF DESCRIPTION			OVERALL SIZE			SHIP WEIGHT LBS. (KG)	CASE CUBE CU. FT. (M3)	FedEx UPS OK KD
	# OF	SIZE (W X L)	CLEARANCE	W	L	H			
2000	3	16" x 24" (406 x 610)	12 1/8" (308)	17 1/8" (435)	32 1/2" 826	34 7/8" 886)	32 (14.5)	3.3 (.09)	OK KD

OPTIONS: Detachable plastic silverware and waste boxes. See page 42. **KD** KD denotes knocked down, shipped unassembled.

MEDIUM DUTY PLASTIC CARTS

- Attractive contour shaped shelves.
- Sturdy reinforced polyethylene shelves with extruded aluminum legs.
- 500-lb. load capacity.
- Light gray and charcoal shelf models available.
- Attractive clear, non-marking 4" all swivel casters.
- Shipped unassembled.

2 MEDIUM DUTY
500 LBS | 230 KG



#2510

#2512

MEDIUM DUTY DEEP WELL PLASTIC UTILITY CART

- Rugged structural foam plastic construction will not dent or bend.
- 3" protective edge on all shelf sides prevents accidents.
- Angle legs with reinforcing gussets provide upright strength and torque-free stability.
- Non-marking 5" plate-mount casters (2 ea. fixed, 2 ea. swivel).
- Casters mount to upright leg base for extra strength.
- No handle assemble required.
- Assembles easily in minutes.

2 MEDIUM DUTY
500 LBS | 230 KG

NEW!



#2523

MODEL	SHELF DESCRIPTION			OVERALL SIZE			SHIP WEIGHT LBS. (KG)	CASE CUBE CU. FT. (M3)	FedEx UPS OK KD
	# OF	SIZE (W X L)	CLEARANCE	W	L	H			
2510	3	16 3/4" x 29 1/2" (425 x 749)	11 1/2" (292)	20" (508)	42" 1067	37 1/2" 953)	39 (17.7)	6.7 (.26)	OK KD
2512	3	16 3/4" x 29 1/2" (425 x 749)	11 1/2" (292)	20" (508)	42" 1067	37 1/2" 953)	39 (17.7)	6.7 (.26)	OK KD
2523 Deep Well	2	24" x 36" (610 x 914)	19 3/4" (502)	25 1/2" (648)	40 1/4" 1022	32 3/4" 832)	42 (19.1)	5.4 (.15)	OK

OPTIONS: Detachable plastic silverware and waste boxes. See page 42. **KD** KD denotes knocked down, shipped unassembled.

GUARD RAIL UTILITY CARTS

- Ideal for any situation where you are transporting items which could fall off the cart easily. Protective guard rail helps eliminate spills and breakage of materials.
- Integrated push handle allows for easy maneuverability of your cart.
- Front rails on all three shelves prevent items from falling during transport.
- Sound deadening panels under shelves restrict vibration and noise.
- All welded stainless steel construction allows for durability and easy sanitation.
- Standard handle and leg bumpers protect cart, walls and doorways from damage.
- Easy to clean and sanitize, simply wipe down or steam clean.



Front rails on all three shelves prevent items from falling during transport.



1 STANDARD DUTY
300 LBS | 135 KG



#316

2 MEDIUM DUTY
500 LBS | 230 KG



#526

3 HEAVY DUTY
700 LBS | 320 KG



#730

MODEL	DURABILITY INDEX RATING	# OF	SHELF DESCRIPTION		OVERALL SIZE			CASTERS		SHIP WEIGHT LBS. (KG)	FedEx UPS
			SIZE (W X L)	CLEARANCE	W	L	H	TYPE	DIA.		
316*	Standard Duty	3	15 1/2" x 24" (394 x 610)	9 1/4" (235)	16 1/4" (492)	27 1/2" (518)	33 3/8" (876)	All swivel	3 1/2" (89)	33 (14.9)	OK
526	Medium Duty	3	18" x 27" (457 x 686)	9" (229)	19" (483)	31" (787)	34 3/4" (857)	All swivel	4" (102)	45 (20.3)	NA
725	Heavy Duty	2	18" x 27" (457 x 686)	17" (432)	19 3/8" (492)	32 5/8" (518)	34 1/2" (876)	All swivel	5" (127)	56 (25.2)	NA
726	Heavy Duty	3	18" x 27" (457 x 686)	9" (229)	19 3/8" (492)	32 5/8" (518)	34 1/2" (876)	All swivel	5" (127)	66 (29.7)	NA
729	Heavy Duty	2	21" x 33" (533 x 838)	18 3/4" (476)	22 3/8" (568)	38 5/8" (981)	37 1/4" (946)	All swivel	5" (127)	65 (29.3)	NA
730	Heavy Duty	3	21" x 33" (533 x 838)	9 3/8" (238)	22 3/8" (568)	38 5/8" (981)	37 1/4" (946)	All swivel	5" (127)	79 (35.6)	NA

Measurements in () denote metric millimeters, unless otherwise specified. 700 Series Guard Rail models have Lake-Glide, No-Mark® casters with cushion tread wheels. * Includes Guard Rail on open edge of top and middle shelf, all 4 sides of bottom shelf.

MEDIUM DUTY STAINLESS STEEL MULTI-SHELF CARTS

2 MEDIUM DUTY
500 LBS | 230 KG

FREIGHT CLASS
125

MODEL	# OF	SHELF DESCRIPTION		OVERALL SIZE			SHIP WEIGHT	
		SIZE (W X L)	CLEARANCE	W	L	H	LBS.	(KG)
ALL SHELF EDGES DOWN								
351	3	18" x 31" (457 x 787)	13 3/4" (349)	19 3/8" (492)	35" 889	36 7/8" 937)	50	(22.7)
353	4	18" x 31" (457 x 787)	8 3/4" (222)	19 3/8" (492)	35" 889	36 7/8" 937)	57	(25.9)
355	5	18" x 31" (457 x 787)	8 3/8" (213)	19 1/4" (489)	32 1/8" 816	45 1/8" 1146)	67	(30.4)

3 EDGES UP, 1 DOWN

352	3	18" x 31" (457 x 787)	13 1/8" (333)	19 3/8" (492)	35" 889	36 7/8" 937)	50	(22.7)
354	4	18" x 31" (457 x 787)	8 3/8" (213)	19 3/8" (492)	35" 889	36 7/8" 937)	57	(25.9)
357	5	18" x 31" (457 x 787)	8 1/8" (206)	19 1/4" (489)	32 1/8" 816	45 1/8" 1146)	67	(30.4)

Measurements in () denote metric millimeters, unless otherwise specified. Lake-Glide® Casters: 5" (127) - 2 ea. swivel, 2 ea. fixed, No-Mark®, cushion tread. OPTIONS: See page 31.

ALL SHELF EDGES DOWN

445	4	21" x 35" (533 x 889)	11 1/2" (292)	22 1/4" (565)	36 3/8" 924	45 5/8" 1159)	78	(35.4)
433	6	21" x 35" (533 x 889)	7 3/8" (187)	22 1/4" (565)	36 3/8" 924	50 3/8" 1280)	98	(44.5)
449	8	21" x 35" (533 x 889)	5 1/2" (140)	22 1/4" (565)	36 3/8" 924	54 1/2" 1384)	119	(54)
460	4	21" x 50" (533 x 1270)	11 1/2" (292)	22 1/4" (565)	51 3/8" 1305	45 5/8" 1159)	155	(70.5)
462	6	21" x 50" (533 x 1270)	7 3/8" (187)	22 1/4" (565)	51 3/8" 1305	50 3/8" 1280)	145	(65.8)
464	8	21" x 50" (533 x 1270)	5 1/2" (140)	22 1/4" (565)	51 3/8" 1305	54 1/2" 1384)	178	(80.7)

3 EDGES UP, 1 DOWN

446	4	21" x 35" (533 x 889)	11 1/8" (283)	22 1/4" (565)	36 3/8" 924	45 5/8" 1159)	78	(35.4)
448	6	21" x 35" (533 x 889)	7 1/8" (181)	22 1/4" (565)	36 3/8" 924	50 3/8" 1280)	98	(44.5)
451	8	21" x 35" (533 x 889)	5 3/8" (137)	22 1/4" (565)	36 3/8" 924	54 1/2" 1384)	119	(54)
461	4	21" x 50" (533 x 1270)	11 1/8" (283)	22 1/4" (565)	51 3/8" 1305	45 5/8" 1159)	155	(70.5)
463	6	21" x 50" (533 x 1270)	7 1/8" (181)	22 1/4" (565)	51 3/8" 1305	50 3/8" 1280)	145	(65.8)
465	8	21" x 50" (533 x 1270)	5 3/8" (137)	22 1/4" (565)	51 3/8" 1305	54 1/2" 1384)	178	(80.7)

Lake-Glide® Casters: 5" (127) - 2 ea. swivel, 2 ea. fixed, No-Mark® cushion tread. Includes perimeter strip bumper. OPTIONS: See page 31.



#355



#353



#351



#448

HEAVY DUTY STAINLESS STEEL MULTI-SHELF CARTS >>

Need a heavy duty multi-shelf cart in a more compact size? These heavy haulers, with sturdy, U-frame construction, will fill the bill. Their compact size allows for easy maneuvering in crowded or narrow service areas.

- Stainless steel, unitized construction gives you years of service life for an added measure of durability.
- Choose the type of shelf that best fits your needs:
 - All shelf edges down for easy loading and unloading from all sides.
 - 3 edges up, 1 down to help hold items on shelves during transport.
- No-Mark® cushion tread casters.

OPTIONS INCLUDE:

- 8" (203) deluxe, heavy-duty swivel caster is available, see below.
- Perimeter bumper, see below.

3 HEAVY DUTY
700 LBS | 320 KG

FREIGHT CLASS 125

STANDARD PRODUCTS SHIP IN 5 DAYS OR LESS



#745

MODEL	SHELF DESCRIPTION			OVERALL SIZE			LAKE-GLIDE® CASTERS		SHIP WEIGHT	
	# OF	SIZE (W X L)	CLEARANCE	W	L	H	TYPE	DIA.	LBS.	(KG)
ALL EDGES DOWN:										
745	4	21" x 33" (533 x 838)	11 1/2" (292)	21 1/2" (546)	38 1/2" (978)	49 1/8" (1248)	2-swivel 2-fixed	5" (127)	99	(44.9)
733	6	21" x 33" (533 x 838)	7 3/8" (187)	21 1/2" (546)	38 1/2" (978)	54 1/2" (1384)	2-swivel 2-fixed	5" (127)	129	(58.5)
760	4	21" x 49" (533 x 1245)	11 1/2" (292)	21 1/2" (546)	54 1/2" (1384)	49 1/4" (1251)	2-swivel 2-fixed	5" (127)	133	(60.3)
762	6	21" x 49" (533 x 1245)	7 3/8" (187)	21 1/2" (546)	54 1/2" (1384)	54 5/8" (1387)	2-swivel 2-fixed	5" (127)	178	(80.7)

3 EDGES UP, 1 DOWN:

746	4	21" x 33" (533 x 838)	11" (279)	21 1/2" (546)	38 1/2" (978)	49 1/8" (1248)	2-swivel 2-fixed	5" (127)	99	(44.9)
748	6	21" x 33" (533 x 838)	7" (178)	21 1/2" (546)	38 1/2" (978)	54 1/2" (1384)	2-swivel 2-fixed	5" (127)	129	(58.5)
761	4	21" x 49" (533 x 1245)	11" (279)	21 1/2" (546)	54 1/2" (1384)	49 1/4" (1251)	2-swivel 2-fixed	5" (127)	139	(63.1)
763	6	21" x 49" (533 x 1245)	7" (178)	21 1/2" (546)	54 1/2" (1384)	54 5/8" (1387)	2-swivel 2-fixed	5" (127)	178	(80.7)

Measurements in () denote metric millimeters, unless otherwise specified. Lake-Glide® Casters: 5" (127) - 2 ea. swivel, 2 ea. fixed, No-Mark®, cushion tread.



Optional Perimeter Bumpers provide protection for walls and furnishings.

MULTI-SHELF CART OPTIONS

FITS MODEL #	PERIMETER BUMPER	2-BRAKE & ALL 5" SWIVEL CASTERS	ALL 8" SWIVEL CASTERS	2-NO BRAKE CASTERS
733, 745, 746	Available	No Extra	Available	Available
760, 762	Available	No Extra	Available	Available

TOUGH TRANSPORT MULTI-SHELF STAINLESS STEEL CARTS >>

- All-welded stainless steel construction provides years of service life.
- Choose the type of shelf that best fits your needs:
 - 3 edges up, 1 down to help hold items on the shelves during transport.
 - All shelf edges down for easy loading and unloading from all sides.
- Easy to clean and sanitize.
- Extended perimeter bumpers for added protection.
- Extra load 8" (203) casters provide a smooth, easy ride.

4 TOUGH TRANSPORT
1000 LBS | 450 KG

FREIGHT CLASS **125**
STANDARD PRODUCTS SHIP IN **6** DAYS OR LESS



#588

MODEL	MODEL	SHELF DESCRIPTION			OVERALL SIZE			SHIP WEIGHT	
		# OF	SIZE (W X L)	CLEARANCE	W	L	H	LBS.	(KG)
3 EDGES UP, 1 DOWN	ALL SHELF EDGES DOWN								
581	582	3	28" x 46" (711 x 1168)	23 1/2" (597)	30 3/4" (781)	51 3/4" 1314	64 3/4" 1645	186	(84.4)
583	584	4	28" x 46" (711 x 1168)	15 1/8" (384)	30 3/4" (781)	51 3/4" 1314	64 3/4" 1645	211	(95.7)
585	586	5	28" x 46" (711 x 1168)	11" (279)	30 3/4" (781)	51 3/4" 1314	64 3/4" 1645	236	(107.1)
587	588	6	28" x 46" (711 x 1168)	8 1/2" (216)	30 3/4" (781)	51 3/4" 1314	64 3/4" 1645	261	(118.4)
564	565	4	28" x 62" (711 x 1575)	15 1/8" (384)	30 3/4" (781)	67" 1702	64 3/4" 1645	240	(109.1)
566	567	5	28" x 62" (711 x 1575)	11" (279)	30 3/4" (781)	67" 1702	64 3/4" 1645	275	(125.0)
568	569	6	28" x 62" (711 x 1575)	8 1/2" (216)	30 3/4" (781)	67" 1702	64 3/4" 1645	305	(138.6)
593	594	4	28" x 70" (711 x 1778)	15 1/8" (384)	30 3/4" (781)	75" 1905	64 3/4" 1645	305	(138.4)
595	596	5	28" x 70" (711 x 1778)	11" (279)	30 3/4" (781)	75" 1905	64 3/4" 1645	345	(156.5)
597	598	6	28" x 70" (711 x 1778)	8 1/2" (216)	30 3/4" (781)	75" 1905	64 3/4" 1645	385	(174.6)

Measurements in () denote metric millimeters, unless otherwise specified. Lake-Glide® Casters: 8" (203) - 2 ea. swivel, 2 ea. fixed, Extra-Load, No-Mark® polyurethane.

EXTREME DUTY MULTI-SHELF ALUMINUM CARTS

- Aluminum carts provide a cost-effective, non-corrosive solution for transporting heavy loads.
- Continuous full welded shelves for added durability.
- Solid shelves with marine edges for added strength and containing spills.
- All shelf edges turned down for easy loading and unloading.
- Round radius handle and uprights for a comfortable, sturdy grip.
- Model 4596 holds 23" (584) wide oval trays – 3 per shelf.
- Shelf clearance for 4567 and 4596 is 12".
Shelf clearance for 4565 is 16 1/2".
- Full perimeter bumper protects walls and furnishings.

5 EXTREME DUTY
1500 LBS | 680 KG

FREIGHT CLASS
125

STANDARD PRODUCTS
SHIP IN **10** DAYS OR LESS



#4596

MODEL	LOAD CAPACITY	SHELF DESCRIPTION			OVERALL SIZE			SHIP WEIGHT	
		# OF	SIZE (W X L)	CLEARANCE	W	L	H	LBS.	(KG)
ALL SHELF EDGES DOWN									
4567	2500 lbs.	5	27" x 64" (69 x 163)	12" (305)	29" (737)	66" (1676)	62" (1575)	147	(66.2)
4596	2500 lbs.	5	27" x 73" (69 x 185)	12" (305)	29" (737)	66" (1676)	75" (1905)	180	(81.1)
4565	2500 lbs.	4	27" x 64" (69 x 163)	16 1/2" (419)	29" (737)	66" (1676)	62" (1575)	135	(60.8)

Measurements in () denote metric millimeters, unless otherwise specified. Lake-Glide® Casters: 8" (203) - 2 ea. swivel, 2 ea. fixed, No-Mark®, polyurethane.

MULTI-SHELF CART OPTIONS

FITS MODEL #	STRIP BUMPERS	PERIMETER BUMPER	ALL 5" SWIVEL CASTERS	ALL 8" SWIVEL CASTERS	ALL 5" CUSHION TREAD CASTERS	2 EA. BRAKE & 2 EA. NO BRAKE CASTERS
351 - 355, 357	Available	Available	Available	N/A	Available	Available
433, 445, 446 448, 449, 451	Standard	Available	Available	Available	Standard	Available
460, 461, 462, 463, 464, 465	Standard	Available	Available	Available	Standard	Available

HANDLER™ SERIES UTILITY CARTS

Grab the ergonomic vertical handle and away you go! When you experience the Handler's "body-friendly" vertical handles for the first time, you'll wonder how you managed to push "regular" carts all these years.

Handler™ Standard Features

- Handler™ Series Carts are a smart choice for maneuvering in confined spaces.
- Unique one-piece vertical handle offers more control when pushing heavy loads.
- All swivel casters provide "tight turn" handling in crowded storage areas.
- Stainless steel design resists staining and rusting and is easy to maintain, clean and sanitize.
- Steam cleans for your convenience.



1 STANDARD DUTY
300 LBS | 135 KG

STANDARD PRODUCTS SHIP IN **3** DAYS OR LESS

MODEL	# OF	SHELF DESCRIPTION		OVERALL SIZE			LAKE-GLIDE® CASTERS		SHIP WEIGHT		FedEx UPS
		SIZE (W X L)	CLEARANCE	W	L	H	TYPE	DIA.	LBS.	(KG)	
4311	3	15 1/2" x 24" (394 x 610)	11 3/4" (298)	16 1/4" (413)	28 1/2" 724	34 1/8" 867)	All swivel	3 1/2" (89)	29	(13.2)	OK
4322	3	18" x 27" (457 x 686)	12 1/4" (311)	18 3/8" (467)	31 3/4" 806	35" 889)	All swivel	3 1/2" (89)	32	(14.5)	NA

Options: 4" (102) 2 ea. swivel w/brake casters, see page 36. Stainless steel shelves: 22-gauge with reinforced front, 20-gauge legs. Perimeter strip bumper, see page 36. Detachable silverware and waste boxes, see page 36. Replacements: Lake-Glide® casters available as replacements for all Lakeside carts.

2 MEDIUM DUTY
500 LBS | 230 KG

FREIGHT CLASS **125** STANDARD PRODUCTS SHIP IN **3** DAYS OR LESS

MODEL	# OF	SHELF DESCRIPTION		OVERALL SIZE			LAKE-GLIDE® CASTERS		SHIP WEIGHT		FedEx UPS
		SIZE (W X L)	CLEARANCE	W	L	H	TYPE	DIA.	LBS.	(KG)	
4411	3	15 1/2" x 24" (394 x 610)	11 1/2" (3292)	17 3/4" (451)	27 5/8" 702	44" 1153)	All swivel	4" (102)	39	(17.7)	OK
4422	3	18" x 27" (457 x 686)	11 1/2" (292)	20" (508)	31" 787	44" 1153)	All swivel	4" (102)	42	(19.1)	NA
4444	3	21" x 35" (533 x 889)	13 1/8" (333)	23 3/8" (594)	39 1/4" 997	49 1/4" 1251)	All swivel No-Mark® cushion tread	5" (127)	68	(30.8)	NA
4459	3	21" x 49" (533 x 1245)	13 1/8" (333)	23 3/8" (594)	54 1/8" 1374	49 1/4" 1251)	All swivel No-Mark® cushion tread	5" (127)	88	(39.9)	NA

Measurements in () denote metric millimeters, unless otherwise specified. Stainless steel gauge: 20-gauge shelves top shelf reinforced, 16-gauge legs. Options: Perimeter and strip bumper available, see page 36. 8" (203) all swivel casters, see page 36. Models 4444 and 4459 Hi-Temp nylon casters, up to 400° F. (204° C.), 5" (127) 2 ea. fixed, 2 ea. swivel casters available.

In addition to standard Handler™ Series features, Heavy Duty and Tough Transport Handler™ models boast:

- Angled “U” shaped steel frame and electronic welding provide the strength needed for heavy-duty jobs.
- Rugged 18-gauge reinforced stainless steel shelves.
- Extra load casters with cushion tread non-marking wheels.

3 HEAVY DUTY
700 LBS | 320 KG

STANDARD PRODUCTS SHIP IN **5** DAYS OR LESS

MODEL	# OF	SHELF DESCRIPTION		OVERALL SIZE			CASTERS		SHIP WEIGHT	
		SIZE (W X L)	CLEARANCE	W	L	H	TYPE	DIA.	LBS.	(KG)
4710	2	15 1/2" x 24" (394 x 610)	19" (483)	16 1/4" (413)	30" 762	46 1/4" 1174)	4-swivel	5" (127)	49	(22.2)
4711	3	15 1/2" x 24" (394 x 610)	10" (254)	16 1/4" (413)	30" 762	46 1/4" 1174)	4-swivel	5" (127)	57	(25.9)
4721	2	18" x 27" (457 x 686)	19" (483)	19 3/8" (492)	32 5/8" 829	46 1/2" 1181)	4-swivel	5" (127)	53	(24)
4722	3	18" x 27" (457 x 686)	10" (254)	19 3/8" (492)	32 5/8" 829	46 1/2" 1181)	4-swivel	5" (127)	63	(28.6)
4743	2	21" x 33" (533 x 838)	21" (533)	22 3/8" (568)	38 5/8" 981	49 1/8" 1248)	4-swivel	5" (127)	64	(29)
4744	3	21" x 33" (533 x 838)	11 3/8" (289)	22 3/8" (568)	38 5/8" 981	49 1/8" 1248)	4-swivel	5" (127)	78	(35.4)
4758	2	21" x 49" (533 x 1245)	21" (533)	22 3/8" (568)	54 5/8" 1387	49 1/8" 1248)	4-swivel	5" (127)	87	(39.5)
4759	3	21" x 49" (533 x 1245)	11 3/8" (289)	22 3/8" (568)	54 5/8" 1387	49 1/8" 1248)	4-swivel	5" (127)	108	(49)

Measurements in () denote metric millimeters, unless otherwise specified. *Lake-Glide® Caster Extra-Load, No-Mark® cushion tread. Replacements: Lake-Glide® casters available as replacements for all Lakeside carts. Options include: 2 ea. 8" fixed wheel, no extra charge. Perimeter bumper, see page 42. 5" (127) 2 ea. swivel w/brake casters, see page 40. Hi-Temp nylon casters, up to 400° F. (204° C.) 5" (127) 2 ea. fixed, 2 ea. swivel casters available.

4 TOUGH TRANSPORT
1000 LBS | 450 KG

FREIGHT CLASS **125**

MODEL	# OF	SHELF DESCRIPTION		OVERALL SIZE			SHIP WEIGHT	
		SIZE (W X L)	CLEARANCE	W	L	H*	LBS.	(KG)
4938	2	18" x 27" (457 x 686)	19" (483)	19 3/4" (502)	33" 838	46 3/4" 1174)	66	(29.9)
4939	3	18" x 27" (457 x 686)	10" (254)	19 3/4" (502)	33" 838	46 3/4" 1174)	80	(36.3)
4943	2	21" x 33" (533 x 838)	21" (533)	22 3/4" (578)	39" 991	39 3/8" 1000)	88	(39.9)
4944	3	21" x 33" (533 x 838)	11 3/8" (289)	22 3/4" (578)	39" 991	39 3/8" 1000)	106	(48.1)
4958	2	21" x 49" (533 x 1245)	21" (533)	22 3/4" (578)	55" 1397	39 3/8" 1000)	123	(55.8)
4959	3	21" x 49" (533 x 1245)	11 3/8" (289)	22 3/4" (578)	55" 1397	39 3/8" 1000)	150	(68)

*Includes height of ergonomic handles. Handle assembly required. Lake-Glide® Casters: 5" (127) - all swivel. Options: Perimeter bumpers, see page 38. Optional ground and polished welds available. Hi-Temp nylon casters, up to 400° F. (204° C.) 5" (127) 2 ea. fixed, 2 ea. swivel casters available. 8" (203) - 2 ea. fixed wheel, no extra charge.

CASTERS

Fixed and swivel casters are interchangeable at the factory or in the field.



All Swivel



Swivel Front & Fixed Back



Fixed Front & Swivel Back

CARTS THAT WORK WITH YOUR BODY TO HELP PREVENT INJURIES

Ergonomics is the term defining work methods and tools designed to accommodate the human body. In other words, keep it simple and make it "body-friendly."

Lakeside's Ergo-One® carts are designed to do just that. Working with an orthopedic specialist, we designed the Ergo-One® Series carts to work with the human body to keep your staff safe from repetitive motion injuries.

The vertical handle ensures that your wrists are in the correct position for pushing and steering. The shelves are located within a "safety zone" that is the proper height for loading and unloading. Even the casters are ergonomically positioned to move with the body, not strain it.

Vertical handle makes pushing safer and more natural.



Stainless steel shelves are in the "safe zone" for repetitive loading and unloading.

STANDARD DUTY ERGO-ONE® UTILITY CARTS

- Ergonomic top shelf height 34 1/8" (867).
- All stainless steel construction and electronically welded.
- 20-gauge stainless steel shelves with reinforced edges.
- Leg bumpers protect walls and furnishings.
- Comfortable vinyl handle grips are available.
- Easy-to-clean and sanitize, simply wipe down or steam clean.
- Lake-Glide® Casters: 5" (127) No-Mark® cushion tread. All swivel. Model 6600 caster assembly required.

1 STANDARD DUTY
300 LBS | 135 KG

FREIGHT CLASS **125**
STANDARD PRODUCTS SHIP IN **3** DAYS OR LESS



#6600

MODEL	SHELF DESCRIPTION			OVERALL SIZE			SHIP WEIGHT		FedEx UPS
	# OF	SIZE (W X L)	CLEARANCE	W	L	H*	LBS.	(KG)	
6600	2	15 1/2" x 24" (394 x 610)	13 1/8" (867)	16 1/2" (419)	28" 711	44 3/8" 1127)	22	(10)	OK
6610	2	18" x 27" (457 x 686)	13 1/8" (333)	19" (483)	31 1/8" 791	44 3/8" 1127)	25	(11.3)	NA

*Includes height of ergonomic handles. Handle assembly required. Accessories, see page 36.

MEDIUM DUTY ERGO-ONE® UTILITY CARTS

- All-welded stainless steel angle frame.
- Electronically-welded seams for added durability.
- 20-gauge stainless steel shelves with reinforced edges.
- Leg bumpers and comfortable handle grips protect walls and furnishings.
- Easy-to-clean and sanitize, simply wipe down or steam clean.

2 MEDIUM DUTY
500 LBS | 230 KG

FREIGHT CLASS
125

STANDARD PRODUCTS
SHIP IN 3 DAYS OR LESS



#6820

MODEL	SHELF DESCRIPTION			TOP SHELF HEIGHT*	OVERALL SIZE			LAKE-GLIDE® CASTERS TYPE		SHIP WEIGHT LBS. (KG)	FedEx UPS
	# OF	SIZE (W X L)	CLEARANCE		W	L	H**	TYPE	DIA.		
6800	2	15 1/2" x 24" (394 x 610)	141/8" (359)	35 1/4" (895)	16 1/2" (419)	28" 711	44 3/8" 1127)	All swivel No-Mark®, cushion tread	5" (127)	32 (14.5)	OK
6810	2	18" x 27" (457 x 686)	141/8" (359)	35 1/4" (895)	19" (483)	31 1/8" 791	44 3/8" 1127)	All swivel No-Mark®, cushion tread	5" (127)	35 (15.9)	NA
6820	2	21" x 35" (533 x 889)	141/2" (368)	35 3/4" (908)	22" (559)	39 1/8" 994	44 3/8" 1127)	All swivel No-Mark®, cushion tread	5" (127)	61 (27.6)	NA
6830	2	21" x 49" (394 x 610)	141/2" (368)	35 3/4" (908)	22" (559)	53 1/8" 1400	44 3/8" 1127)	2- swivel 2-fixed No-Mark®, cushion tread	5" (127) 5" (127)	128 (58.2)	NA

Measurements in () denote metric millimeters, unless otherwise specified. *Measured from floor. **Includes height of ergonomic handles. Handle assembly required. Model 6800 caster assembly required. Replacements: Lake-Glide® casters available as replacements for all Lakeside carts. Optional accessories, see page 36.

HEAVY DUTY ERGO-ONE® UTILITY CARTS

- Top shelf height from the floor is 40" - 43" (1016 - 1092), bottom shelf is 20" (508).
- Angled steel frame and electronic welding provide strength needed for heavy-duty jobs.
- Rugged 18-gauge reinforced stainless steel shelves are stain and rust resistant.
- Extra load casters with cushion tread non-marking wheels.
- Leg bumpers and comfortable handle grips protect walls and furnishings.
- Easy to clean and sanitize – simply wipe down or steam clean.

3 HEAVY DUTY
700 LBS | 320 KG

FREIGHT CLASS
125



#7025

MODEL	SHELF DESCRIPTION			TOP SHELF HEIGHT*	OVERALL SIZE			SHIP WEIGHT	
	# OF	SIZE (W X L)	CLEARANCE		W	L	H**	LBS.	(KG)
7010	2	18" x 27" (457 x 686)	18 1/2" (470)	40" (1016)	18 5/8" (473)	35 3/8" 899	46 3/4" 1187)	53	(24)
7015	3	18" x 27" (457 x 686)	10" (254)	43" (1092)	18 5/8" (473)	35 3/8" 899	46 3/4" 1187)	63	(28.6)
7020	2	21" x 33" (533 x 838)	18 1/2" (470)	40" (1016)	21 5/8" (549)	41 3/8" 1051	46 3/4" 1187)	64	(29)
7025	3	21" x 33" (533 x 838)	10" (254)	43" (1092)	21 5/8" (549)	41 3/8" 1051	46 3/4" 1187)	78	(35.4)
7030	2	21" x 49" (533 x 1245)	18 1/2" (470)	40" (1016)	21 5/8" (549)	57 3/16" 1453	46 3/4" 1187)	127	(57.7)

Lake-Glide® Casters: 5" (127) - 2 ea. swivel, 8" (203) - 2 ea. fixed, No-Mark, cushion tread. *Measured from floor. **Includes height of ergonomic handles. Handle assembly required. Replacements: Lake-Glide® casters and wheels available as replacements for all Lakeside carts. Accessories, see page 36. Hi-Temp nylon casters, up to 400° F. (204° C.) 5" (127) 2 ea. fixed, 2 ea. swivel casters available.

**TOUGH TRANSPORT
ERGO-ONE® UTILITY CARTS**

- Ergonomic vertical handle makes pushing safer and more natural.
- Shelf heights are in the safe range for repetitive loading and unloading. Top shelf height from the floor is 40" - 43" (1016 - 1092), bottom shelf is 20" (508).
- Stainless steel shelves and frame joints feature continuous heliarc welding.
- 14-gauge stainless steel shelves have reinforced edges for heavy loads and load drops.
- Extra load casters (2 ea. 5" swivel & 2 ea. 8" fixed) with cushion tread, non-marking wheels.
- Easy-to-clean and sanitize.



When carrying heavy loads, safe maneuvering and loading is a real concern. Vertical handles, shelves located at a safe loading and unloading height, and casters that steer from the back of the cart (where you have the most leverage) keep your staff safe when moving heavy loads.

#7120

4 TOUGH TRANSPORT
1000 LBS | 450 KG

FREIGHT CLASS 125

STANDARD PRODUCTS SHIP IN 5 DAYS OR LESS

MODEL	SHELF DESCRIPTION			OVERALL SIZE			SHIP WEIGHT	
	# OF	SIZE (W X L)	CLEARANCE	W	L	H*	LBS.	(KG)
7120	2	21" x 33" (533 x 838)	18 1/2" (470)	21 5/8" (549)	41 3/8" 1051	46 3/4" 1187)	88	(39.9)
7130	2	21" x 49" (533 x 1245)	18 1/2" (470)	21 5/8" (549)	57 7/16" 1459	46 3/4" 1187)	163	(74.1)
7140	2	24" x 42" (610 x 1067)	18 1/2" (470)	24 5/8" (625)	50 7/16" 1281	46 3/4" 1187)	166	(75.5)

**Includes height of ergonomic handles. Handle assembly required. Lake-Glide® Casters: 5" (127) - 2 ea. swivel, 8" (203) - 2 ea. fixed; Extra load, No-Mark® cushion tread. Options: Ground and polished joint welds. Hi-Temp nylon casters, up to 400° F. (204° C.) 5" (127) 2 ea. fixed, 2 ea. swivel casters available. More accessories, see below.*

ACCESSORIES FOR ERGO-ONE® SYSTEM CARTS

FITS MODEL #'S	6600 6610	6800 6810	6820	6830	7010 7015	7020 7025	7030	7120	7130	7140
Ergonomic Handle Grips and Bumpers, Blue	Available	Standard	Standard	Standard	Standard	Standard	Standard	Standard	Standard	Standard
Handle Set Both Ends	N/A	N/A	N/A	N/A	Available	Available	Available	Available	Available	Available
Perimeter Channel Bumper	N/A	N/A	N/A	N/A	Available	Available	Available	Available	Available	Available
2 Brake Casters	N/A	Available	Available	Available	Available	Available	Available	Available	Available	Available
4 - 5" Swivel Casters	N/A	N/A	N/A	N/A	No Extra	No Extra	No Extra	N/A	N/A	N/A
2 - 5" Swivel, 2 - 5" Fixed Casters	N/A	Available	N/A	N/A	N/A	N/A	N/A	No Extra	No Extra	No Extra
2 - 5" Swivel, 2 - 5" Fixed High-Temp Nylon Casters	Available	Available	Available	Available	Available	Available	Available	Available	Available	Available

HEAVY DUTY DEEP SHELF UTILITY CARTS

- 2 1/2" (64) deep top shelf holds items securely in place.
- Ideal for transporting supplies.
- Two popular sizes available.
- Rugged 18-gauge reinforced stainless steel shelves are stain and rust resistant.
- Electronically welded for added strength.
- Easy to clean and sanitize – simply wipe down or steam clean.
- Leg and handle bumpers protect walls and furniture.

3 HEAVY DUTY
700 LBS | 320 KG

FREIGHT CLASS 125

#727



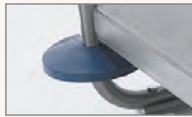
2 1/2" (64) deep top shelf holds items securely in place.

MODEL	SHELF DESCRIPTION			OVERALL SIZE			LAKE-GLIDE® CASTERS		SHIP WEIGHT	
	# OF	SIZE (W X L)	CLEARANCE	W	L	H	TYPE	DIA.	LBS.	(KG)
727	2	21" x 33"	19 1/4"	22 1/4"	38"	37 1/4"	2-swivel	5" (127)	64	(29)
		(533 x 838)	(489)	(532)	964	945)	2-fixed	8" (203)		
757	2	21" x 49"	19 1/4"	23 1/4"	54"	37 1/4"	2-swivel	5" (127)	87	(39.5)
		(533 x 1245)	(489)	(532)	1371	945)	2-fixed	8" (203)		

Measurements in () denote metric millimeters, unless otherwise specified. *Lake-Glide® Extra-Load, No-Mark® cushion tread casters. Replacements: Lake-Glide® casters available as replacements for all Lakeside carts.



Corner Leg Bumpers
Vinyl bumper strips attach to the front edges of carts to protect walls and furniture. Sold in sets of two.



Round Corner Bumpers
Bumpers fit tubular legs to protect walls and doors. Made of resilient vinyl. Sold in sets of four.



Perimeter Bumper
Excellent safeguard for doors, walls and furnishings. Perimeter bumpers are away from the cart frame in a specially engineered channel. Made of extruded vinyl.



No-Mark Casters
Swivel casters for easy handling, plus the added convenience of a non-marking tread.



Brake Casters
Swivel casters feature a step-on locking brake. Sold in sets of two.



Sta-Clean Vinyl Covers
Slides over mobile equipment to protect contents. Made of durable 12 mil vinyl. A wide variety of sizes are available.

FITS MODEL #	STRIP BUMPERS	PERIMETER BUMPER	2-5" FIXED 2-5" SWIVEL CASTERS	HI-TEMP 2-5" FIXED 2-5" SWIVEL	ALL 8" SWIVEL CASTERS	ALL 5" CUSHION TREAD	2 BRAKE & 2 NO BRAKE CASTERS	STA-CLEAN VINYL COVERS +
311, 316, 322, 4311, 4322	Available	N/A	Available	N/A	N/A	Available	Available	Available
403, 444, 4444	Available	Available	Available	Available	Available	Standard	Available	Available
411, 422, 526, 4411, 4422	Available	N/A	Available	N/A	N/A	Available	Available	Available
459, 4459	Available	Available	Standard	Available	Available	Standard	Available	N/A
510, 511, 4510, 4511	N/A	Available	N/A	Available	N/A	Standard	Available	Available
521, 522, 543, 544, 4521, 4522, 4543, 4544	N/A	Available	N/A	Available	Available	Standard	Available	Available
558, 559, 4558, 4559	N/A	Available	N/A	Available	Available	Standard	Available	N/A
603	Available	Available	Available	Available	Available	Standard	Available	Available
610, 615	Available	N/A	Available	N/A	N/A	Available	Available	Available
622, 626	Available	N/A	Available	N/A	N/A	Available	Available	Available
644, 646	Available	Available	Available	Available	Available	Standard	Available	Available
710, 711, 4710, 4711, 721, 722, 743, 744, 4721, 4722, 4743, 4744	N/A	Available	N/A	Available	N/A	Standard	Available	Available
758, 759, 4758, 4759	N/A	Available	N/A	Available	Available	Standard	Available	N/A
810, 815	Available	N/A	Available	N/A	N/A	Available	Available	Available
822*, 844**	Available	Available	Available	Available	Available	Standard	Available	Available
938, 939, 943, 944 4938, 4939, 4943, 4944	N/A	Available	N/A	Available	N/A	Standard	Available	Available
947, 949, 4947, 4949	N/A	Available	N/A	Available	N/A	Standard	Available	N/A
953, 954, 4953, 4954	N/A	Available	N/A	Available	N/A	Standard	Available	N/A
958, 959, 4958, 4959	N/A	Available	N/A	Available	N/A	Standard	Available	N/A

All Casters are Lake-Glide®. * Perimeter bumper and 8" caster not Available on model 822. **Caster configuration for Model 844 with perimeter bumper is 2 ea. 5" (127) swivel, 2 ea. 5" (127) fixed. + Not Available for Handler™ Series Models.



PLASTIC UTILITY BINS AND PANS

- Thick, molded polyethylene with reinforced stainless steel shelf hooks.
- Mount on the end of carts for the 2000 and all stainless steel models adding capacity.
- Often used to separate wet material or liquids from dry items being transported.

MODEL	DESCRIPTION	OVERALL SIZE			SHIP WEIGHT	
		W	L	H	SINGLE PACK LBS. (KG.)	BULK PACK* LBS. (KG.)
202	Waste Box	9 1/4"	13 1/2"	24"	6 (2.7)	28 (12.7)
206	Jumbo Waste Box	11 1/4"	14 3/8"	26"	8 (3.6)	36 (16.3)
208	Silver Box	6 3/4"	15 3/4"	6"	4 (1.8)	15 (6.8)

*Bulk pack is 6 ea. (except for model 206, bulk packed 4 ea). Color: Gray

ADAPTER BAR

- Adapter Bar for use with tubular carts. Fits over tubular handle.

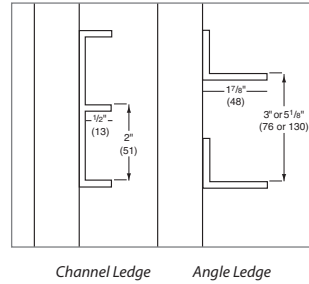
MODEL	LENGTH	MODEL	LENGTH	MODEL	LENGTH
09900	15 1/2"	09901	18"	09902	21"



NARROW OPENING SHEET PAN & TRAY RACKS

- Welded stainless steel for years of trouble free service.
- Durable, efficient storage system with all welded stainless steel construction for maximum strength.
- Ships fully assembled for use right out of the carton.
- Both channel and angle style ledges are electronically welded to the uprights to withstand continual use. Tie bars are welded to the uprights for added rigidity.
- A variety of casters are available from economical 4" (102) corner stem to heavy-duty 5" (127) recessed plate with No-Mark® polyurethane wheels.
- Stainless steel design is easy to sanitize and maintain.
- Choose corner stem caster models.
- Choose recessed plate caster models for rolling in tight spaces. See page 48 for optional accessories.

LEDGE CONFIGURATION FOR STAINLESS STEEL MODELS



#155



MODEL	PAN CAPACITY		LEDGE DESCRIPTION			OVERALL SIZE			LAKE-GLIDE® CASTERS		SHIP WEIGHT	
	FULL	HALF	TYPE	SPACING	WIDTH	W	D	H	TYPE	DIA.	LBS.	(KG)
ECONOMY SERIES - 4" (102) CORNER STEM CASTERS												
125	35 ea.	70 ea.	Channel	17/16" (37)	1/2" (13)	21" (533)	27 1/4" 692	57 1/2" 1460	Corner Stem	4" (102)	64	(29)
126	41 ea.	82 ea.	Channel	17/16" (37)	1/2" (13)	21" (533)	27 1/4" 692	67 1/2" 1715	Corner Stem	4" (102)	70	(31.8)
135	16 ea.	32 ea.	Angle	3" (76)	15/16" (33)	23 1/4" (533)	29 1/4" 692	57 1/2" 1460	Corner Stem	4" (102)	62	(28.1)
136	20 ea.	40 ea.	Angle	3" (76)	15/16" (33)	21" (533)	27 1/4" 692	67 1/2" 1715	Corner Stem	4" (102)	68	(30.8)
155	10 ea.	20 ea.	Angle	5" (127)	15/16" (33)	23 1/4" (533)	29 1/4" 692	57 1/2" 1460	Corner Stem	4" (102)	50	(22.7)
156	12 ea.	24 ea.	Angle	5" (127)	15/16" (33)	21" (533)	27 1/4" 692	67 1/2" 1715	Corner Stem	4" (102)	55	(25)
STANDARD SERIES - 5" (127) CORNER STEM CASTERS												
127	24 ea.	48 ea.	Channel	17/16" (37)	1/2" (13)	21" (533)	29 1/4" 743	43 1/2" 1105	Corner Stem	5" (127)	56	(25.4)
128	35 ea.	70 ea.	Channel	17/16" (37)	1/2" (13)	21" (533)	29 1/4" 743	58 1/2" 1486	Corner Stem	5" (127)	73	(33.1)
129	41 ea.	82 ea.	Channel	17/16" (37)	1/2" (13)	21" (533)	29 1/4" 743	68 1/2" 1740	Corner Stem	5" (127)	78	(35.4)
137	11 ea.	22 ea.	Angle	3" (76)	15/16" (33)	21" (533)	29 1/4" 743	43 1/2" 1105	Corner Stem	5" (127)	53	(24)
138	16 ea.	32 ea.	Angle	3" (76)	15/16" (33)	21" (533)	29 1/4" 743	58 1/2" 1486	Corner Stem	5" (127)	70	(31.8)
139	20 ea.	40 ea.	Angle	3" (76)	15/16" (33)	21" (533)	29 1/4" 743	68 1/2" 1740	Corner Stem	5" (127)	80	(36.3)
157	7 ea.	14 ea.	Angle	5" (127)	15/16" (33)	21" (533)	29 1/4" 743	43 1/2" 1105	Corner Stem	5" (127)	45	(20.4)
158	10 ea.	20 ea.	Angle	5" (127)	15/16" (33)	21" (533)	29 1/4" 743	58 1/2" 1486	Corner Stem	5" (127)	57	(25.9)
159	12 ea.	24 ea.	Angle	5" (127)	15/16" (33)	21" (533)	29 1/4" 743	68 1/2" 1740	Corner Stem	5" (127)	62	(28.1)

MODEL	PAN CAPACITY		LEDGE DESCRIPTION			OVERALL SIZE			LAKE-GLIDE® CASTERS		SHIP WEIGHT	
	FULL	HALF	TYPE	SPACING	WIDTH	W	D	H	TYPE	DIA.	LBS.	(KG)
STANDARD SERIES - 5" (127) RECESSED PLATE CASTERS												
162	37 ea.	74 ea.	Channel	17/16" (37)	1/2" (13)	21" (533)	26 1/4" (667)	62 1/8" (1588)	Recessed Plate	5" (127)	75	(34)
163	41 ea.	82 ea.	Channel	17/16" (37)	1/2" (13)	21" (533)	26 1/4" (667)	67 1/8" (1705)	Recessed Plate	5" (127)	82	(37.2)
172	18 ea.	36 ea.	Angle	3" (76)	15/16" (33)	21" (533)	26 1/4" (667)	62 1/8" (1578)	Recessed Plate	5" (127)	77	(34.9)
173	20 ea.	40 ea.	Angle	3" (76)	15/16" (33)	21" (533)	26 1/4" (667)	67 1/8" (1705)	Recessed Plate	5" (127)	80	(36.3)
182	11 ea.	22 ea.	Angle	5" (127)	15/16" (33)	21" (533)	26 1/4" (667)	62 1/8" (1578)	Recessed Plate	5" (127)	60	(27.2)
183	12 ea.	24 ea.	Angle	5" (127)	15/16" (33)	21" (533)	26 1/4" (667)	67 1/8" (1705)	Recessed Plate	5" (127)	65	(29.5)

Options Include: Corner leg bumpers set of 4 ea. Pan stop, see page 44.

PAN & TRAY RACKS

- Welded stainless steel is your best choice for years of trouble free service.
- Durable, efficient storage system with all welded stainless steel construction for maximum strength.
- Angle style ledges are electronically welded to the uprights to withstand continual use. Tie bars are welded to the uprights for added rigidity.
- Angle style ledges are electronically welded to the uprights for added strength.
- Stainless steel design is easy to sanitize and maintain.
- See page 48 for options.



#179

MODEL	DESCRIPTION				LEDGE DESCRIPTION			OVERALL SIZE			SHIP WEIGHT	
	STYLE	LOADING	TRAY	CAPACITY	TYPE	SPACING	WIDTH	W	D	H	LBS.	(KG)
168	Single	End	10 ea.	14" x 18" (356 x 457)	Angle	5" (127)	15/16" (33)	17 1/4" (438)	22 1/4" (565)	58 1/2" (1486)	48	(21.6)
179	Single	End	12 ea.	15" x 20" (381 x 508)	Angle	5" (127)	15/16" (33)	18 1/4" (464)	22 1/4" (565)	68 1/2" (1740)	54	(24.5)

Lake-Glide® Casters: 5" (127) - All swivel, corner mount stem type. Options Include: Pan stop, Corner leg bumpers set of 4 ea., see page 44.

ROLL-IN COOLER & PROOFER RACKS

- Maximize your roll-in cooler storage capacity with affordable and practical stainless steel racks.
- Durable stainless steel design. Ledges are electronically welded to the uprights for added strength.
- Recessed plate mounted casters for easy handling in tight spaces.
- A wide variety of pan capacities are available with spacing that varies from 17/16" (38) to 5" (127).
- See page 48 for options.



#173



MODEL	FITS COOLERS	PAN CAPACITY		LEDGE DESCRIPTION			OVERALL SIZE			SHIP WEIGHT LBS. (KG)
		FULL	HALF	TYPE	SPACING	WIDTH	W	D	H	
163	High Type	41 ea.	82 ea.	Channel	1 7/16" (37)	1/2" (13)	21" (553)	26 1/4" 667	67 1/8" 1705	82 (37.2)
173	High Type	20 ea.	40 ea.	Angle	3" (76)	1 5/16" (33)	21" (553)	26 1/4" 667	67 1/8" 1705	80 (36.3)
183	High Type	12 ea.	24 ea.	Angle	5" (127)	1 5/16" (33)	21" (553)	26 1/4" 667	67 1/8" 1705	65 (29.5)

Lake-Glide® Casters: 5" (127) - All swivel, recessed plate mount. Options available, see page 44.

MODEL	FITS COOLERS	PAN CAPACITY		LEDGE DESCRIPTION			OVERALL SIZE			SHIP WEIGHT LBS. (KG)
		FULL	HALF	TYPE	SPACING	WIDTH	W	D	H	
126	High Type	41 ea.	82 ea.	Channel	1 7/16" (37)	1/2" (13)	21" (553)	27 1/4" 692	67 1/2" 1715	70 (31.8)
136	High Type	20 ea.	40 ea.	Angle	3" (76)	1 5/16" (33)	21" (553)	27 1/4" 692	67 1/2" 1715	68 (30.8)
156	High Type	12 ea.	24 ea.	Angle	5" (127)	1 5/16" (33)	21" (553)	27 1/4" 692	67 1/2" 1715	55 (25)

Lake-Glide® Casters: 4" (102) - All swivel, corner stem mount. Options available, see page 44.

MODEL	FITS COOLERS	PAN CAPACITY		LEDGE DESCRIPTION			OVERALL SIZE			SHIP WEIGHT LBS. (KG)
		FULL	HALF	TYPE	SPACING	WIDTH	W	D	H	
162	Low Type	37 ea.	74 ea.	Channel	1 7/16" (37)	1/2" (13)	21" (553)	26 1/4" 667	62 1/8" 1578	75 (34)
172	Low Type	18 ea.	36 ea.	Angle	3" (76)	1 5/16" (33)	21" (553)	26 1/4" 667	62 1/8" 1578	77 (34.9)
182	Low Type	11 ea.	22 ea.	Angle	5" (127)	1 5/16" (33)	21" (553)	26 1/4" 667	62 1/8" 1578	60 (27.2)

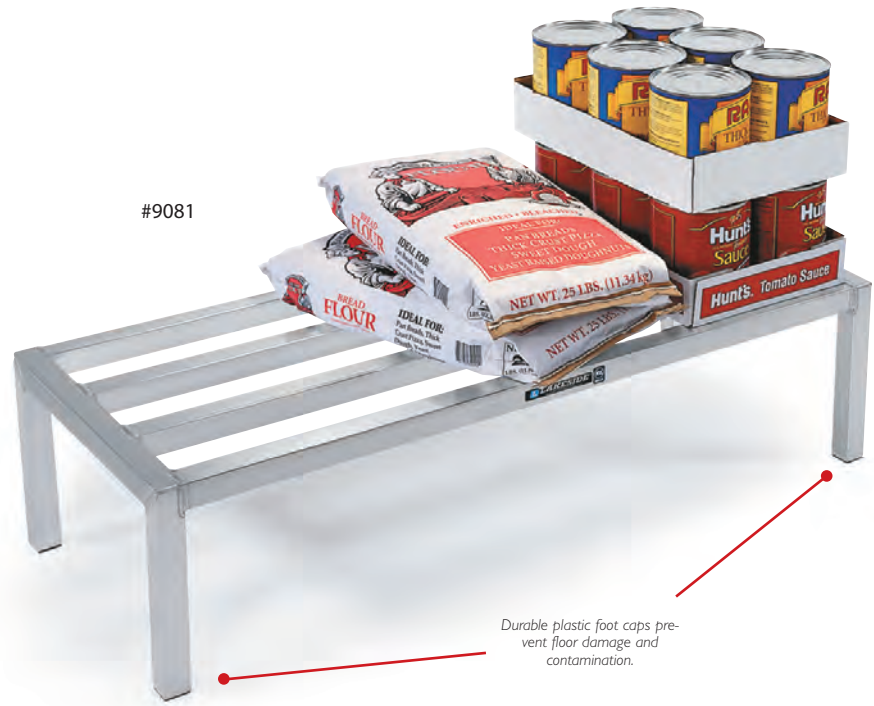
Lake-Glide® Casters: 5" (127) - All swivel, recessed plate mount. Options available, see page 44.

MODEL	FITS COOLERS	PAN CAPACITY		LEDGE DESCRIPTION			OVERALL SIZE			SHIP WEIGHT LBS. (KG)
		FULL	HALF	TYPE	SPACING	WIDTH	W	D	H	
125	Low Type	35 ea.	70 ea.	Channel	1 7/16" (37)	1/2" (13)	21" (553)	29 1/4" 743	57 1/2" 1461	64 (29)
135	Low Type	16 ea.	32 ea.	Angle	3" (76)	1 5/16" (33)	23 1/4" (591)	29 1/4" 743	57 1/2" 1461	62 (28.1)
155	Low Type	10 ea.	20 ea.	Angle	5" (127)	1 5/16" (33)	23 1/4" (591)	29 1/4" 743	57 1/2" 1461	50 (22.7)

Measurements in () denote metric millimeters unless otherwise specified. Lake-Glide® Casters: 4" (102) - All swivel, corner stem mount. No-Mark® Polyurethane casters: two swivel casters w/brakes (plate caster models only). Options Include: Corner leg bumpers set of 4 ea. available, see page 42. Pan stop available, see page 44.

ALUMINUM DUNNAGE RACKS

- All welded aluminum construction to provide strength and durability.
- Offered with **1500 lbs.** or **2000 lbs.** capacity.
- 1 1/2" x 1 1/2" (38 x 38) thick heavy .070 (2) wall extruded aluminum alloy tube.
- Rust-proof and corrosion resistant.
- Easy-to-clean solid surfaces with no cracks or crevices to collect dirt and debris.
- Feet are capped with durable plastic inserts to prevent floor damage and contamination.
- Twelve models are available in two heights and two depths.
- Models are available in 20" or 24" width and 8" or 12" height.



MODEL	LOAD CAPACITY LBS. (KG)	OVERALL SIZE			NUMBER OF LATERAL BARS	SHIP WEIGHT LBS. (KG)	FedEx UPS
		W	L	H			
9070	2000 (901)	20" (508)	36" 914	8" 203	4	8 (3.6)	OK
9071	2000 (901)	20" (508)	48" 1219	8" 203	4	10 (4.5)	OK
9072	1500 (676)	20" (508)	60" 1524	8" 203	4	12 (5.4)	OK
9080	2000 (901)	20" (508)	36" 914	12" 305	4	8 (3.6)	OK
9081	2000 (901)	20" (508)	48" 1219	12" 305	4	10 (4.5)	OK
9082	1500 (676)	20" (508)	60" 1524	12" 305	4	12 (5.4)	OK
9170	2000 (901)	24" (610)	36" 914	8" 203	5	9 (4.1)	OK
9171	2000 (901)	24" (610)	48" 1219	8" 203	5	12 (5.4)	OK
9172	1500 (676)	24" (610)	60" 1524	8" 203	5	14 (6.3)	OK
9180	2000 (901)	24" (610)	36" 914	12" 305	5	10 (4.5)	OK
9181	2000 (901)	24" (610)	48" 1219	12" 305	5	12 (5.4)	OK
9182	1500 (676)	24" (610)	60" 1524	12" 305	5	15 (6.8)	N/A

STAINLESS STEEL MACHINE STANDS

- Lower shelf holds accessories and other supplies.
- Rugged stainless steel design features an 18-gauge reinforced top supported by rigid 12-gauge angle legs.
- Transports equipment easily on 4" (102) swivel casters, 2 with brakes.
- Optional adjustable legs available for a stationary stand.
- Easy to clean and sanitize, simply wipe down or steam clean.



Optional adjustable feet create a stationary stand.



Optional Accessory Storage Pole holds utensils and machine accessories within easy reach.

#716



MODEL	SHELF DESCRIPTION			OVERALL SIZE			SHIP WEIGHT		FedEx UPS OK
	# OF	SIZE (W X L)	CLEARANCE	L	W	H	LBS.	(KG)	
715	2	20" x 24"	91/2"	21 1/4" (508 x 610)	25 1/4" (241)	21 3/16" (540)	44	(20)	OK
716	2	20" x 24"	171/2"	21 1/4" (508 x 610)	25 1/4" (445)	29 3/16" (540)	47	(21.3)	OK
717	2	24" x 32" (610 x 813)	91/2" (241)	25 1/4" (641)	33 1/4" (845)	21 3/16" (538)	49	(22.2)	NA
718	2	24" x 32"	171/2"	25 1/4" (610 x 813)	33 1/4" (445)	29 3/16" (641)	61	(27.7)	NA

Measurements in () denote metric millimeters, unless otherwise specified. Lake-Glide® Casters: 4" (102) ea. - All swivel, 2 w/ brake. Lake-Glide® casters available as replacements for all Lakeside Mobile Stands. Options Include: Adjustable feet in place of casters. 5-arm accessory storage pole, see above.

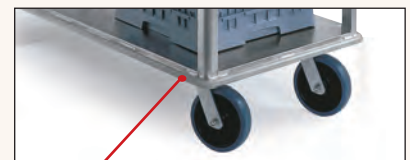
PAN & TRAY RACK OPTIONS



CORNER LEG BUMPERS – Vinyl bumper strips attach to the front edges of carts to protect walls and furniture. Sold in sets of four.



BOTTOM CORNER BUMPERS – 6" x 6" (152) "L" shaped vinyl strip attaches to the bottom of the cart covering the corners. Protects walls and doors. Sold in sets of four.



PERIMETER BUMPER – Excellent safeguard for doors, walls and furnishings. Extends around the entire base of rack. Made of extruded vinyl.

FITS MODEL #	CORNER LEG BUMPERS	BOTTOM CORNER BUMPERS	PERIMETER BUMPER	LAKE-GLIDE® CASTERS 2 BRAKE CASTERS	POLYURETHANE CASTERS	PAN STOP
127-129, 137-139, 157-159, 168, 179	Available	NA	NA	Available	Standard	Available
125, 126, 135, 136, 155, 156	Available	NA	NA	Available	Available	Available
162, 163, 166, 172, 173, 176, 180, 182, 183	Available	NA	NA	Available	Standard	Available

STAINLESS STEEL DOLLIES

- Designed for transporting and storing 20" x 20" (508 x 508) cup/glass racks.
- Rust proof and corrosion resistant.
- Easy to clean and sanitize, simply wipe down or steam clean.



#447



#450

MODEL	PLATFORM SIZE			LOAD CAPACITY LBS. (KG)	OVERALL SIZE*			LAKE GLIDE [®] CASTERS		SHIP WEIGHT LBS. (KG)	FedEx UPS
	L	W	H		L	W	H	TYPE	DIA.		
447	20 3/4" (527)	20 3/4" (527)	1" (24)	200 (91)	20 3/4" (527)	20 3/4" (527)	6 1/4" (159)	All swivel	4" (102)	25 (11.3)	OK
450	20 3/4" (527)	20 3/4" (527)	1" (24)	200 (91)	27" (686)	21" (530)	32" (813)	All swivel	4" (102)	28 (12.7)	OK KD
452	20 3/4" (527)	20 3/4" (527)	1" (24)	400 (181)	27 1/2" (695)	21" (530)	32" (813)	All swivel	5" (127)	32 (14.5)	OK

Measurements in () denote metric millimeters, unless otherwise specified. *Includes tubular handle on Models 450 and 452. denotes knocked down, shipped unassembled. Options Include: Corner bumpers. Sta-Clean[®] vinyl cover #09521.

ALUMINUM DOLLIES FOR SHEET PANS (& OTHER USES)

- Designed for transporting and storing 18" x 26" (457 x 660), 14" x 18" and 13" x 18" sheet pans and trays.
- All welded construction for lasting durability.
- Rust proof and corrosion resistant.
- Model #337 has optional tubular aluminum handle and 1 1/2" (38) lip on all sides of solid one-piece platform to prevent spills



#633

Welded handles make steering through tight spaces much easier.



#631



#337
(shown with optional handle)

#337, 620:



#631, 633:



MODEL	PLATFORM SIZE			LOAD CAPACITY LBS. (KG)	OVERALL SIZE			LAKE GLIDE [®] CASTERS		SHIP WEIGHT LBS. (KG)	
	L	W	H		L	W	H	TYPE	DIA.		
337	20 5/8" (524)	20 5/8" (524)	1 1/2" (32)	700 (315)	20 5/8" (524)	22 3/8" (568)	9 1/4" (235)	All swivel	5" (127)	21 (9.5)	OK

MODEL	DESCRIPTION	LOAD CAPACITY LBS. (KG)	OVERALL SIZE			LAKE GLIDE [®] CASTERS		SHIP WEIGHT LBS. (KG)	FedEx UPS
			L	W	H	TYPE	DIA.		
620	Angle w/ No Sides, No Handle	500 (225)	18 7/8" (524)	27" (686)	7" (178)	All swivel Plate	5" (127)	20 (9.0)	OK
631	Angle w/ Sides & Handle	500 (225)	21" (533)	27" (686)	33 1/2" (851)	All swivel Plate	5" (127)	22 (9.9)	N/A
633	Two Tier Angle w/ Sides & Handle	500 (225)	21" (533)	30" (762)	44 1/2" (1130)	All swivel Plate	5" (127)	29 (13.1)	N/A

Measurements in () denote metric millimeters, unless otherwise specified. KD denotes knocked down, shipped unassembled. Options Include: Detachable handle for Model 337. 2 ea. 9" (127) casters with brakes for Model 337.

STAINLESS STEEL DUAL HANDLE

- “U” shaped handle and frame design for added strength and durability.
- Ideal for transporting trays and other supplies.
- Platform is 10 1/4" (260) from floor.
- Convenient dual handle maneuvering.
- Cleans and sanitizes easily.



MODEL	PLATFORM SIZE		LOAD CAPACITY LBS. (KG)	OVERALL SIZE*			LAKE GLIDE® CASTERS		SHIP WEIGHT LBS. (KG)
	L	W		L	W	H	TYPE	DIA.	
217	21 1/2" (546)	33 3/4" (857)	400 (181)	22 1/2" (527)	34 3/4" (883)	32 1/4" (819)	All swivel No-Mark®, cushion tread	5" (127)	44 (20)
456	24" (610)	48" (1219)	1000 (453)	24 7/8" (632)	53 1/2" (1359)	35 1/8" (892)	4 ea. swivel 2 ea. fixed No-Mark®, 2" cushion tread	5" (127) 8" (203)	120 (54.4)

Measurements in () denote metric millimeters, unless otherwise specified. *Platform height 10 1/4" (260) from floor. Option: Round corner bumpers for Model 217.

ALUMINUM SINGLE HANDLE

- 2000 lb (901 Kg.) load capacity.
- All welded construction for lasting durability.
- Platform is 9 1/2" (241 mm) from floor.
- Rust-proof and corrosion resistant.

#7516



MODEL	PLATFORM SIZE		LOAD CAPACITY LBS. (KG)	OVERALL SIZE*			LAKE GLIDE® CASTERS		SHIP WEIGHT LBS. (KG)
	L	W		L	W	H	TYPE	DIA.	
7516	24" (610)	48" (1219)	2000 (901)	24" (632)	50 1/2" (1283)	42" (1067)	2 ea. swivel 2 ea. fixed No-Mark®, 2" cushion tread	6" (152) 6" (152)	54 (24.3)
7518	30" (762)	60" (1524)	2000 (901)	30" (762)	62 1/2" (1588)	42" (1067)	2 ea. swivel 2 ea. fixed No-Mark®, 2" cushion tread	6" (152) 6" (152)	72 (32.4)

Measurements in () denote metric millimeters, unless otherwise specified. *Platform height is 9 1/2" (241) from floor. Option: Additional removable handle.

STAINLESS STEEL SINGLE HANDLE

- Match the job with the size of the platform.
- Reinforced platform is 8 1/4" (210) from floor.
- Stainless steel platform surface for easy cleaning and sanitizing.
- Designed for maximum maneuverability and ease of loading and unloading.

"U" shaped, 1" tubular handle and frame are made from one continuous piece to maximize strength.



#454

MODEL	PLATFORM SIZE		LOAD CAPACITY LBS. (KG)	OVERALL SIZE*			LAKE GLIDE® CASTERS		SHIP WEIGHT LBS. (KG)	FedEx ups OK KD
	L	W		L	W	H	TYPE	DIA.		
454	20" (508)	30" (762)	650 (294)	21" (533)	36 1/4" (921)	35 1/4" (895)	2 ea. swivel 2 ea. fixed No-Mark®, cushion tread	5" (127) 8" (203)	48 (21.8)	OK KD
455	24" (610)	36" (914)	650 (294)	24" (610)	41 3/4" (1060)	35 1/4" (895)	2 ea. swivel 2 ea. fixed No-Mark®, cushion tread	5" (127) 8" (203)	61 (27.7)	OK KD

Measurements in () denote metric millimeters, unless otherwise specified. Platform height 8 1/4" (210) from floor. KD denotes knocked down, shipped unassembled.

For over 20 years, our housekeeping carts are an industry favorite for hotels, office buildings, doctor's offices, schools, government facilities, and the hospitality industry. Lakeside stainless steel housekeeping carts are easy to sanitize and keep looking sparkly clean and new for years!

FIXED PLATFORM CART

- All stainless steel construction.
- 4" ball-bearing rubber-wheel casters.
- Complies with OSHA and OBRA standards.
- Blue nylon bag.
- 4" casters - 2 ea. swivel, 2 ea. fixed, with No-Mark polyurethane wheels.
- Fold-up handle/bag frame.
- 3" deep recessed top tray.
- Full perimeter bumper.
- Welded cabinet construction.
- Roomy storage compartment with adjustable shelves, key-lock security door version available.

FREIGHT CLASS
125

#53570
(Accessories not included)

#53580
(Accessories not included)



MODEL	DESCRIPTION	OVERALL SIZE (L X W X H)	PLATFORM SIZE (W X L)	SINGLE BUCKET FITS OPEN AREA (W X L)	SUPPLY COMPARTMENT (L X W X H)	SHIP WEIGHT (LBS.)
53570	Without Door	18" x 46" x 41"	18" x 36"	18" x 17"	18" x 18" x 36"	78
53580	With Door	18" x 46" x 41"	18" x 36"	18" x 17"	18" x 18" x 36"	88

Shipped partially assembled.

FOLD-UP PLATFORM CART

- All stainless steel construction.
- Space-saving two-bucket capacity fold-up 18" x 31" platform.
- Complies with OSHA and OBRA standards.
- Blue nylon bag.
- Dual-purpose handle and bag frame.
- 4" casters - 4 ea. swivel, 2 ea. fixed with No-Mark® polyurethane wheels.
- Front end platform bumpers.
- Roomy storage compartment with adjustable shelves.
- 3-inch deep recessed top tray.
- Welded cabinet construction.
- Handle and platform fold up to store cart in 24" x 30" area.
- Locking device holds platform securely in upright folded position during storage.

FREIGHT CLASS
125



#58070
(Accessories not included)

#58570

Two Bucket Platform

- Platform folds up to store in 18" x 31" area.
- Key-lock security door version available.

MODEL	DESCRIPTION	OVERALL SIZE (L X W X H)	PLATFORM SIZE (W X L)	OPEN AREA (W X L)	SUPPLY COMPARTMENT (L X W X H)	SHIP WEIGHT (LBS.)
58070	Without Door	18" x 58" x 41"	18" x 48"	18" x 31"	18" x 18" x 36"	84
58080	With Door	18" x 58" x 41"	18" x 48"	18" x 31"	18" x 18" x 36"	94

Shipped partially assembled.

One Bucket Platform

- Platform folds up to store in 24" x 30" area.

MODEL	DESCRIPTION	OVERALL SIZE (L X W X H)	PLATFORM SIZE (W X L)	OPEN AREA (W X L)	SUPPLY COMPARTMENT (L X W X H)	SHIP WEIGHT (LBS.)
58570	Without Door	18" x 46" x 41"	18" x 36"	18" x 17"	18" x 18" x 36"	78
58580	With Door	18" x 46" x 41"	18" x 36"	18" x 17"	18" x 18" x 36"	88

Shipped partially assembled.

BAG FOR HOUSEKEEPING CARTS

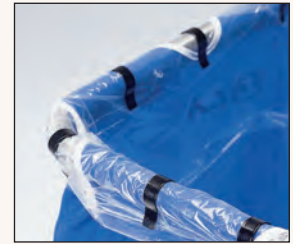
MODEL	DESCRIPTION
51503	White Canvas
53509	Blue nylon
53511	Blue anti-bacterial
53513	Blue vinyl
53510	Blue nylon with zipper
53512	Blue anti-bacterial with zipper



#51503
White canvas bag



#53504
Stainless steel bag lid with bumper edge.



#53517
Bag liner clips

BAG LID

MODEL	DESCRIPTION
53504	Stainless Steel Bag Lid

BAG LINER CLIPS

MODEL	DESCRIPTION
53517	Set of 12 Bag Liner Clips



#53507
Stainless steel sign hanger bracket.



#50531
Galvanized round bucket



#53507
Sign hanger bracket

SIGN HANGER BRACKET

MODEL	DESCRIPTION
53507	Sign Hanger Bracket

GALVANIZED BUCKETS

MODEL	DESCRIPTION
50510	Galvanized Oval Bucket
50531	Galvanized Round Bucket (32 qt.)

CAUTION SIGN

MODEL	DESCRIPTION
50518	Caution sign

MOP WRINGERS

MODEL	DESCRIPTION
50515	Gear-Down 8-16 qt.
50516	Gear-Down 16-24 qt.
50517	Squeeze Type



#50518
Caution sign



#50515
Gear-down wringer

POWERED PLATFORM CARTS

TIME STUDIES PROVE THAT THE PLUSPOWER ALLOWS YOUR STAFF TO WORK FASTER AND SMARTER, ALLOWING YOUR OPERATIONS TO BE MORE PROFITABLE.

PlusPower carts are the most versatile battery operated carts available, adaptable to hundreds of uses. Bolt, weld or clamp on your current equipment and transport carts to the steel platform and you can create your own custom cart. Each feature was carefully designed to not only increase productivity and safety, but to be easy to use and maintain under any application.

- Rugged power system helps you transport up to 1,500 lbs on a flat surface with little effort (1000 lbs on a 6° incline)
- Two proportional speed ranges to match your pace of work
- Emergency stop switch for added security
- Battery recharges each time brake is applied
- Intuitive finger tip motion controls are easy to use (simply push control forward to move forward and push downward to reverse)
- Center wheel drive improves traction and prevents spinning wheels
- Automatic brake when hand is off control increases operator safety
- Shock absorbing spring suspension reduces strain
- Speed automatically adjusts when going downhill to prevent accidents
- Reinforced tubular steel frame provides strength and support
- Standard product is white



#8165



Easy to use thumb control



Sealed AGM maintenance free batteries.

ECONOMY PLATFORM

Low cost alternative with front wheel drive and 1000 lb. capacity. Same great features as our PlusPower platform truck plus:

- Easy access to control and battery box housing for quick maintenance
- Handle Height: 38"

NEW!



#8145

MODEL	PLATFORM SIZE	MAX. LOAD CAPACITY	OVERALL SIZE			CASTERS/WHEELS		SHIP WEIGHT		CASE CUBE	
			W	L	H	TYPE	DIA.	LBS.	(KG)	CU FT	(M3)
8145	25 1/2" x 47 3/4" (648 x 1213)	1000 (454)	27"	57"	39 1/2"	4 ea. Swivel Casters 2 ea. Power Wheels	8" (203) 8 3/4" (224)	270	(122)	47.6	(1.9)
8165	27" x 41" (686 x 1041)	1500 (680)	27"	50"	42 1/4"	4 ea. Swivel Casters 2 ea. Power Wheels	5" (127) 8 3/4" (224)	265	(119)	47.6	(1.9)
8180	27" x 48" (610 x 1219)	1500 (680)	27"	56 1/2"	42 1/2"	4 ea. Swivel Casters 2 ea. Power Wheels	5" (127) 8 3/4" (224)	270	(122)	47.6	(1.9)
8190	27" x 60" (610 x 1524)	1500 (680)	27"	68 1/2"	42 1/2"	4 ea. Swivel Casters 2 ea. Power Wheels	5" (127) 8 3/4" (224)	292	(131)	56.6	(2.3)

Measurements in () denote metric millimeters, unless otherwise specified. *Platform height 11-1/2" (292) from floor.

PLUSPOWER™ TUG

The Lakeside PlusPower Tug is designed to reduce injuries associated with repetitive pushing and pulling of heavily laden carts.

The Tug is an ergonomically-designed motorized tow vehicle used to pull a variety of single or multiple carts in a safe and efficient manner with very little effort from the operator. Lakeside's Tug has applications throughout material handling environments and can pull virtually any piece of mobile equipment when used with available hitches and adjustable hitch receiver tubes. See below for hitch information.

Features:

- 24-Volt DC Transaxle Drive.
- 24-Volt DC Lift Motor/Actuator (IP-66 rated).
- Non-marking, flat-free tires.
- 22 Amp/Hr AGM or Sealed Lead Acid Batteries – Qty-2.
- Quick-change battery system.
- Self-diagnostics-enabled, 125-amp controller .
- User interface hand controller (horn, key switch, lift button, throttle, 2-speed switch).
- Small footprint (less than 16" D x 24" W x 45" H).
- Built-in battery with charge indicator.
- ABS shroud.
- Travel wheel for use when transporting without a load (cart).
- "Rain Proof" (IP-54 rating).
- Pin configuration hitch docking for use on many carts.



#8162



MODEL	MAX. TOW LOAD (LBS.)	OVERALL SIZE			WHEELS TYPE/DIA.	SHIP WEIGHT LBS. (KG)	CASE CUBE CU FT (M3)
		W	L	H			
8162	1,500	24" (610)	18 3/4" 476	41 1/2" 1056)	Flat-Free, Non-Marking / 8 3/4"	150 (68)	21 (.59)

UNIVERSAL HITCH SYSTEM

• **Universal Hitch Receiver** – The Universal Hitch System allows the tug to tow virtually any piece of mobile equipment. Simply install a Receiver Tube to the bottom side of the mobile equipment, then insert a component hitch.



Hitches dock easily to coupling on the tug

BOLT-ON RECEIVER TUBE (SPECIFY LENGTH)

MODEL	DESCRIPTION	LIST PRICE \$
4757*	Bolt-On Receiver Tube	106.00

CLAMP-ON ADJUSTABLE RECEIVER TUBE

MODEL	SIZE	ADJUSTABLE LENGTH	LIST PRICE \$
4751	Small Adjustable Clamp-On Hitch	26" - 41"	323.00
4752	Medium Adjustable Clamp-On Hitch	40" - 55"	346.00
4753	Large Adjustable Clamp-On Hitch	56" - 76"	358.00

MALE HITCH - FOR TOWING SINGLE PIECES

MODEL	FITS CARTS	SHIP WEIGHT LBS. (KG)	LIST PRICE \$
4750	5" or 6" casters	4 (1.8)	162.00
4755	6" or 8" casters	4 (1.8)	150.00

FEMALE HITCH - FOR TOWING MULTIPLE PIECES

MODEL	FITS CARTS	SHIP WEIGHT LBS. (KG)	LIST PRICE \$
4754	5" or 8" casters	6 (2.7)	150.00



*Specify tube length desired
Measurements in () denote metric millimeters, unless otherwise specified.

Bases designed with plate casters deliver improved durability and greater capacity than traditional stem caster carts.

Additionally, Lakeside bases provide protection, stability and mobility.

Models are also available with factory installed tow hitch for use with the #8162 Powered Tug.



ROUND POST DOLLY BASED CARTS WITH TOW HITCHES

PART#	DESCRIPTION	DIMENSIONS D X W X H	SHIP WGT (LBS)
R184863CS-4	4-Shelf Starter		62
RDB61848	Dolly Base	18 x 48	41
RDB6184863CC-4	Wire Cart and Dolly Base	18 x 48 x 63	103
RDB6184863CC-4TOW	Wire Cart, Dolly Base and Hitch	18 x 48 x 63	112
R186063CS-4	4-Shelf Starter		82
RDB61860	Dolly Base 18 x 60		47
RDB6186063CC-4	Wire Cart and Dolly Base	18 x 60 x 63	129
RDB6186063CC-4TOW	Wire Cart, Dolly Base and Hitch	18 x 60 x 63	138
R187263CS-4	4-Shelf Starter		94
RDB61872	Dolly Base 18 x 72		53
RDB6187263CC-4	Wire Cart and Dolly Base	18 x 72 x 63	147
RDB6187263CC-4TOW	Wire Cart, Dolly Base and Hitch	18 x 72 x 63	156
R244863CS-4	4-Shelf Starter		78
RDB62448	Dolly Base 24 x 48		43
RDB6244863CC-4	Wire Cart and Dolly Base	24 x 48 x 63	121
RDB6244863CC-4TOW	Wire Cart, Dolly Base and Hitch	24 x 48 x 63	130
R246063CS-4	4-Shelf Starter		98
RDB62460	Dolly Base 24 x 60		49
RDB6246063CC-4	Wire Cart and Dolly Base	24 x 60 x 63	147
RDB6246063CC-4TOW	Wire Cart, Dolly Base and Hitch	24 x 60 x 63	156
R247263CS-4	4-Shelf Starter		118
RDB62472	Dolly Base 24 x 60		55
RDB6247263CC-4	Wire Cart and Dolly Base	24 x 72 x 63	173
RDB6247263CC-4TOW	Wire Cart, Dolly Base and Hitch	24 x 72 x 63	182

SQUARE POST DOLLY BASED CARTS WITH TOW HITCHES

PART#	DESCRIPTION	DIMENSIONS D X W X H	SHIP WGT (LBS)
S184864ZS-4	4-Shelf Starter		84
RDB61848	Dolly Base 18 x 48		41
SDB6184864ZC-4	Wire Cart and Dolly Base	18 x 48 x 64	125
SDB6184864ZC-4TOW	Wire Cart, Dolly Base and Hitch	18 x 48 x 64	134
S186064ZS-4	4-Shelf Starter		95
RDB61860	Dolly Base 18 x 60		47
SDB6186064ZC-4	Wire Cart and Dolly Base	18 x 60 x 64	142
SDB6186064ZC-4TOW	Wire Cart, Dolly Base and Hitch	18 x 60 x 64	151
S187264CS-4	4-Shelf Starter		104
RDB61872	Dolly Base 18 x 72		53
SDB6187264ZC-4	Wire Cart and Dolly Base	18 x 72 x 64	157
SDB6187264ZC-4TOW	Wire Cart, Dolly Base and Hitch	18 x 72 x 64	166
S244863ZS-4	4-Shelf Starter		88
RDB62448	Dolly Base 24 x 48		43
SDB6244864ZC-4	Wire Cart and Dolly Base	24 x 48 x 64	131
SDB6244864ZC-4TOW	Wire Cart, Dolly Base and Hitch	24 x 48 x 64	140
S246064ZS-4	4-Shelf Starter		108
RDB62460	Dolly Base 24 x 60		49
SDB6246064ZC-4	Wire Cart and Dolly Base	24 x 60 x 64	157
SDB6246064ZC-4TOW	Wire Cart, Dolly Base and Hitch	24 x 60 x 64	166
S247264ZS-4	4-Shelf Starter		128
RDB62472	Dolly Base 24 x 60		55
SDB6247264ZC-4	Wire Cart and Dolly Base	24 x 72 x 64	183
SDB6247264ZC-4TOW	Wire Cart, Dolly Base and Hitch	24 x 72 x 64	192

- Accessories for:
 - Ergo-One® System Utility Carts 42
 - Housekeeping Carts 53
 - Multi-Shelf Carts 37
 - Racks 49
 - Shelving 11-13, 19
 - Utility Carts 44
- Aluminum
 - Dunnage Racks 48
 - Multi-Shelf Carts 37
 - Sheet Pan Dollies 50
- Carbon Steel
 - Lift Tables 22
 - Open Shelf Carts 23
 - Platform Trucks 23
 - Shop Desks 24
- Cart Covers 13, 31
- Carts
 - Deep Shelf Utility 43
 - Enclosure 8, 17
 - Equipment Stand 21
 - Guard Rail 33
 - Housekeeping 52
 - Linen Service 31
 - Machine Stand 49
 - Multi-Purpose with Wire Baskets 20
 - Multi-Shelf, Aluminum 37
 - Multi-Shelf, Stainless Steel 34-36
 - Nurse's Office Supply Carts 20
 - Open Shelf, Carbon Steel 23
 - Plastic 32
 - Utility, Stainless Steel 27-30
 - Wire 6-10, 16-18
- Casters 11, 19, 44
- Cooler Racks 47
- Covers, Cart 13, 31
- Deep Shelf Utility Carts 43
- Desk, Shop 24
- Dollies
 - Aluminum Sheet Pan 50
 - Cup/Glass Rack 50
- Dolly Bases 12, 16, 56
- Dunnage Racks 48
- Durability Index 25
- Enclosure Carts 8, 17
- Equipment Stands 21
- Ergo-One® System Utility Carts 40-42
- Four-Shelf Wire Carts 7, 16
- General Information 2
- Guard Rail Carts 33
- Hitches & Receiver Tubes 55
- Housekeeping Carts 52
- Lift Tables 22
- Linen Service Carts 31
- Load Capacity Calculator 26
- Machine Stand Carts 49
- Multi-Purpose Cart with Wire Baskets 20
- Multi-Shelf Carts
 - Aluminum 37
 - Stainless Steel 34-36
- Nylon Cart Covers 13, 31
- Open Shelf Carts, Carbon Steel 23
- Pan Racks 45-47
- Plastic
 - Carts 32
 - Utility Bins & Pans 44
- Platform Trucks 23, 51
- PlusPower™ Powered Platform Trucks 54
- PlusPower™ Powered Tugs 55
- Racks
 - Cooler/Proofer 47
 - Dunnage 48
 - Tray & Pan 45, 46
- Receiver Tubes 55
- Roll-In Cooler & Proofer Racks 47
- Round Post Wire Shelving, Carts, Accessories 4-13
- Security Carts 9, 18
- Shelving Systems/Carts/Accessories:
 - Wire 4-19
- Shop Desk 24
- Square Post Wire Shelving, Carts, Accessories 12-19
- Stainless Steel
 - Equipment Stands 21
 - Guard Rail Carts 33
 - Handler™ Series Utility Carts 38, 39
 - Linen Service Carts 31
 - Machine Stands 49
 - Multi-Shelf Carts 34-36
 - Platform Trucks 51
 - Sheet Pan & Tray Racks 45-47
 - Utility Carts 27-30, 33-35, 38-42
- Steel Bed Platform Trucks 23
- Stem Casters 11, 19
- Tables, Lift 22
- Three-Side Enclosure Carts 8, 17
- Tray Racks 45, 46
- Tugs, Powered 55
- Universal Hitches & Receiver Tubes 55
- Utility Bins & Pans, Plastic 44
- Utility Carts, Stainless Steel 27-30, 33-35, 38-42
- Warranty Information 2
- Wire Shelving, Carts & Accessories 4-19

MODEL	PAGE	MODEL	PAGE	MODEL	PAGE	MODEL	PAGE	MODEL	PAGE
125	45, 47	473	30	4565	37	9070	48	PPT2448	23
126	45, 47	474	21	4567	37	9071	48	PPT3060	23
127	45	479	30	4596	37	9072	48	PPT53060	23
128	45	489	30	4650	20	9080	48	R183654CA-4	5
129	45	492	30	4652	20	9081	48	R183654CC-4	7
135	45, 47	493	30	4653	20	9082	48	R183654CC-5	7
136	45, 47	499	30	4710	39	9170	48	R183654CS-4	4
137	45	526	33	4711	39	9171	48	R183663CA-4	5
138	45	564	36	4721	39	9172	48	R183663CC-4	7
139	45	565	36	4722	39	9180	48	R183663CC-5	7
155	45, 47	566	36	4743	39	9181	48	R183663CS-4	4
156	45, 47	567	36	4744	39	9182	48	R183663CTS-4	8
157	45	568	36	4750	55	09502	31	R183672CA-4	5
158	45	569	36	4751	55	09503	31	R183672CC-4	7
159	45	581	36	4752	55	09520	31	R183672CC-5	7
162	46, 47	582	36	4753	55	09563	31	R183672CS-4	4
163	46, 47	583	36	4754	55	09900	44	R183672CTS-4	8
168	46	584	36	4755	55	09901	44	R183686CA-4	5
172	46, 47	585	36	4757	55	09902	44	R183686CS-4	4
173	46, 47	586	36	4758	39	19550	31	R18368WP	20
179	46	587	36	4759	39	19560	31	R1836C	5
182	46, 47	588	36	4908	20	19570	31	R1836CUC-2	6
183	46, 47	593	36	4910	20	19590	31	R1836CUC-3	6
202	44	594	36	4938	39	19600	31	R184854CA-4	5
206	44	595	36	4939	39	19610	31	R184854CC-4	7
208	44	596	36	4943	39	19620	31	R184854CC-5	7
210	30	597	36	4944	39	19630	31	R184854CS-4	4
211	30	598	36	4958	39	19640	31	R184863CA-4	5
217	51	620	50	4959	39	19650	31	R184863CC-4	7
221	30	631	50	6600	40	19660	31	R184863CC-5	7
222	30	633	50	6610	40	19670	31	R184863CS-4	4, 56
243	30	710	28	6800	41	19680	31	R184863CTS-4	8
244	30	711	28	6810	41	19690	31	R184872CA-4	5
311	27	715	49	6820	41	19700	31	R184872CC-4	7
316	27, 33	716	49	6830	41	19710	31	R184872CC-5	7
322	27	717	49	7010	41	19720	31	R184872CS-4	4
332	31	718	49	7015	41	19730	31	R184872CTS-4	8
333	31	721	28	7020	41	19740	31	R184886CA-4	5
337	50	722	28	7025	41	19750	31	R184886CS-4	4
351	34	725	33	7030	41	19760	31	R18488WP	20
352	34	726	33	7120	42	19770	31	R1848C	5
353	34	727	43	7130	42	19780	31	R1848CUC-2	6
354	34	729	33	7140	42	19790	31	R1848CUC-3	6
355	34	730	33	7516	51	19800	31	R186054CA-4	5
356	21	733	35	7518	51	19810	31	R186054CC-4	7
357	34	743	28	8145	54	19820	31	R186054CC-5	7
358	21	744	28	8162	55	50510	53	R186054CS-4	4
359	21	745	35	8165	54	50515	53	R186063CA-4	5
411	27	746	35	8180	54	50516	53	R186063CC-4	7
422	27	748	35	8190	54	50517	53	R186063CC-5	7
433	34	757	43	8353	21	50518	53	R186063CS-4	4, 56
442	31	758	28	8354	21	50531	53	R186063CTS-4	8
443	31	759	28	8355	21	51503	53	R186072CA-4	5
444	27	760	35	8356	21	53504	53	R186072CC-4	7
445	34	761	35	8357	21	53507	53	R186072CC-5	7
446	34	762	35	8358	21	53509	53	R186072CS-4	4
447	50	763	35	8359	21	53510	53	R186072CTS-4	8
448	34	938	28	8380	21	53511	53	R186086CA-4	5
449	34	939	28	8381	21	53512	53	R186086CS-4	4
450	50	943	28	8382	21	53513	53	R18608WP	20
451	34	944	28	8383	21	53517	53	R1860C	5
452	50	947	28	8384	21	53570	52	R1860CUC-2	6
454	51	949	28	8385	21	53580	52	R1860CUC-3	6
455	51	953	28	8386	21	58070	52	R187254CA-4	5
456	51	954	28	8387	21	58080	52	R187254CC-4	7
459	27	958	28	8388	21	58570	52	R187254CC-5	7
460	34	959	28	8389	21	58580	52	R187254CS-4	4
461	34	2000	32	8390	21	AHT90	24	R187263CA-4	5
462	34	2510	32	8391	21	BV02	20	R187263CC-4	7
463	34	2512	32	8392	21	CSSD	24	R187263CC-5	7
464	34	2523	32	8393	21	ELT1100	22	R187263CS-4	4, 56
465	34	4311	38	8394	21	ELT1650	22	R187263CTS-4	8
466	21	4322	38	8395	21	ELT330	22	R187272CA-4	5
469	21	4411	38	8398	21	ELT660	22	R187272CC-4	7
470	31	4422	38	8399	21	ELT770	22	R187272CC-5	7
471	31	4444	38	8820	29	HT1766	24	R187272CS-4	4
472	30	4459	38	8840	29	OSSD	24	R187272CTS-4	8

MODEL	PAGE	MODEL	PAGE	MODEL	PAGE	MODEL	PAGE	MODEL	PAGE
R187286CA-4	5	R247272CS-4	4	RL48-4C	11	S187264ZTS-4	17	SD24Z	19
R187286CS-4	4	R247272CTS-4	8	RL60-4C	11	S187272ZA-4	15	SDB-3	19
R1872C	5	R247286CA-4	5	RL72-4C	11	S187272ZC-4	16	SDB6184864ZC-4	56
R243654CA-4	5	R247286CS-4	4	RP5BL	11	S187272ZS-4	14, 56	SDB6184864ZC-4TOW	56
R243654CC-4	7	R2472C	5	RP5R	11	S187272ZTS-4	17	SDB6186064ZC-4	56
R243654CC-5	7	R54C	5	RP5S	11	S187284ZA-4	15	SDB6186064ZC-4TOW	56
R243654CS-4	4	R63C	5	RPCLAMP	11	S187284ZS-4	14	SDB6187264ZC-4	56
R243663CA-4	5	R72C	5	RPPLATE	12	S1872Z	15	SDB6187264ZC-4TOW	56
R243663CC-4	7	R86C	5	RPSSC	11	S243654ZA-4	15	SDB6244864ZC-4	56
R243663CC-5	7	RC1836H	12	RSHOOK	11	S243654ZC-4	16	SDB6244864ZC-4TOW	56
R243663CS-4	4	RC1848H	12	RSLH-6	12	S243654ZS-4	14	SDB6246064ZC-4	56
R243663CTS-4	8	RC1860H	12	RSSCAP1836	11	S243664ZA-4	15	SDB6246064ZC-4TOW	56
R243672CA-4	5	RC1872H	12	RSSCAP1848	11	S243664ZC-4	16	SDB6247264ZC-4	56
R243672CC-4	7	RC2436H	12	RSSCAP1860	11	S243664ZS-4	14	SDB6247264ZC-4TOW	56
R243672CC-5	7	RC2448H	12	RSSCAP1872	11	S243664ZTS-4	17	SEP1864Z	17
R243672CS-4	4	RC2460H	12	RSSCAP2436	11	S243672ZA-4	15	SEP1872Z	17
R243672CTS-4	8	RC2472H	12	RSSCAP2448	11	S243672ZC-4	16	SEP2464Z	17
R243686CA-4	5	RCC183663	13	RSSCAP2460	11	S243672ZS-4	14	SEP2472Z	17
R243686CS-4	4	RCC183672	13	RSSCAP2472	11	S243672ZTS-4	17	SEP3664Z	17
R24368WP	20	RCC184863	13	RTTF1836	5	S243684ZA-4	15	SEP3672Z	17
R2436C	5	RCC184872	13	RTTF1848	5	S243684ZS-4	14	SEP4864Z	17
R2436CUC-2	6	RCC186063	13	RTTF1860	5	S2436Z	15	SEP4872Z	17
R2436CUC-3	6	RCC186072	13	RTTF1872	5	S244854ZA-4	15	SEP6064Z	17
R244854CA-4	5	RCC187263	13	RTTF2436	5	S244854ZC-4	16	SEP6072Z	17
R244854CC-4	7	RCC187272	13	RTTF2448	5	S244854ZS-4	14	SFOOT	19
R244854CC-5	7	RCC243663	13	RTTF2460	5	S244864ZA-4	15	SINSERT	19
R244854CS-4	4	RCC243672	13	RTTF2472	5	S244864ZC-4	16	SL18-4Z	19
R244863CA-4	5	RCC244863	13	RUH218C	6	S244864ZS-4	14, 56	SL24-4Z	19
R244863CC-4	7	RCC244872	13	RUH224C	6	S244864ZSEC-2	17	SL36-4Z	19
R244863CC-5	7	RCC246063	13	S183654ZA-4	15	S244864ZTS-4	18	SL48-4Z	19
R244863CS-4	4, 56	RCC246072	13	S183654ZC-4	16	S244872ZA-4	15	SL60-4Z	19
R244863CSEC-2	9	RCC247263	13	S183654ZS-4	14	S244872ZC-4	16	SL72-4Z	19
R244863CTS-4	8	RCC247272	13	S183664ZA-4	15	S244872ZS-4	14	SP5BL	19
R244872CA-4	5	RD18C	11	S183664ZC-4	16	S244872ZTS-4	17	SP5R	19
R244872CC-4	7	RD24C	11	S183664ZS-4	14	S244884ZA-4	15	SP5S	19
R244872CC-5	7	RDB187263CC-4	56	S183664ZTS-4	17	S244884ZS-4	14	SPCLAMP	19
R244872CS-4	4	RDB-3	11	S183672ZA-4	15	S2448Z	15	SPSSZ	19
R244872CTS-4	8	RDB61836	12, 16	S183672ZC-4	16	S246054ZA-4	15	SPT2448	23
R244886CA-4	5	RDB61848	12, 16, 56	S183672ZS-4	14	S246054ZC-4	16	SPT3060	23
R244886CS-4	4	RDB6184854CC-4	10	S183672ZTS-4	17	S246054ZS-4	14	SSHOOKZ	19
R24488WP	20	RDB6184863CC-4	10, 56	S183684ZA-4	15	S246064ZA-4	15	SSSCAP1836	19
R2448C	5	RDB6184863CC-4TOW	56	S183684ZS-4	14	S246064ZC-4	16	SSSCAP1848	19
R2448CUC-2	6	RDB6184863CTS-4	10	S1836Z	15	S246064ZS-4	14, 56	SSSCAP1860	19
R2448CUC-3	6	RDB6184872CTS-4	10	S184854ZA-4	15	S246064ZSEC-2	18	SSSCAP1872	19
R246054CA-4	5	RDB61860	12, 16, 56	S184854ZC-4	16	S246064ZTS-4	17	SSSCAP2436	19
R246054CC-4	7	RDB6186054CC-4	10	S184854ZS-4	14	S246072ZA-4	15	SSSCAP2448	19
R246054CC-5	7	RDB6186063CC-4	10, 56	S184864ZA-4	15	S246072ZC-4	16	SSSCAP2460	19
R246054CS-4	4	RDB6186063CC-4TOW	56	S184864ZC-4	16	S246072ZS-4	14	SSSCAP2472	19
R246063CA-4	5	RDB6186063CTS-4	10	S184864ZS-4	14, 56	S246072ZTS-4	17	SSWMS12X36	20
R246063CC-4	7	RDB6186072CTS-4	10	S184864ZTS-4	17	S246084ZA-4	15	SSWMS12X48	20
R246063CC-5	7	RDB61872	12, 16, 56	S184872ZA-4	15	S246084ZS-4	14	SSWMS12X60	20
R246063CS-4	4, 56	RDB6187263CC-4TOW	56	S184872ZC-4	16	S2460Z	15	SSWMS16X36	20
R246063CSEC-2	9	RDB62436	12, 16	S184872ZS-4	14	S247254ZA-4	15	SSWMS16X48	20
R246063CTS-4	8	RDB62448	12, 16, 56	S184872ZTS-4	17	S247254ZC-4	16	SSWMS16X60	20
R246072CA-4	5	RDB6244854CC-4	10	S184884ZA-4	15	S247254ZS-4	14	SSWMS8X36	20
R246072CC-4	7	RDB6244863CC-4	10, 56	S184884ZS-4	14	S247264ZA-4	15	SSWMS8X48	20
R246072CC-5	7	RDB6244863CC-4TOW	56	S1848Z	15	S247264ZC-4	16	UL18-4	12
R246072CS-4	4	RDB6244863CTS-4	10	S186054ZA-4	15	S247264ZS-4	14, 56	UL24-4	12
R246072CTS-4	8	RDB6244872CTS-4	10	S186054ZC-4	16	S247264ZTS-4	17	UL36-4	12
R246086CA-4	5	RDB62460	12, 16, 56	S186054ZS-4	14	S247272ZA-4	15	UL48-4	12
R246086CS-4	4	RDB6246054CC-4	10	S186064ZA-4	15	S247272ZC-4	16	UL60-4	12
R24608WP	20	RDB6246063CC-4	10	S186064ZC-4	16	S247272ZS-4	14	UL72-4	12
R2460C	5	RDB6246063CC-4TOW	56	S186064ZS-4	14, 56	S247272ZTS-4	17	WLEVCAP	12
R2460CUC-2	6	RDB6246063CTS-4	10, 56	S186064ZTS-4	17	S247284ZA-4	15	WMSSD	24
R2460CUC-3	6	RDB6246072CTS-4	10	S186072ZA-4	15	S247284ZS-4	14		
R247254CA-4	5	RDB62472	12, 16, 56	S186072ZC-4	16	S247Z	15		
R247254CC-4	7	RDB6247263CC-4	56	S186072ZS-4	14	S54Z	15		
R247254CC-5	7	RDB6247263CC-4TOW	56	S186072ZTS-4	17	S64Z	15		
R247254CS-4	4	REP1364C	8	S186084ZA-4	15	S72Z	15		
R247263CA-4	5	REP1372C	8	S186084ZS-4	14	S84Z	15		
R247263CC-4	7	REP1964C	8	S1860Z	15	SC1830-2	23		
R247263CC-5	7	REP1972C	8	S187254ZA-4	15	SC1830-3	23		
R247263CS-4	4, 56	RFOOT	11	S187254ZC-4	16	SC2436-2	23		
R247263CTS-4	8	RINSERT	11	S187254ZS-4	14	SC2436-3	23		
R247272CA-4	5	RL18-4C	11	S187264ZA-4	15	SC244863	9, 18		
R247272CC-4	7	RL24-4C	11	S187264ZC-4	16	SC246063	9, 18		
R247272CC-5	7	RL36-4C	11	S187264ZS-4	14, 56	SD18Z	19		

ASK ABOUT OUR OTHER PRODUCT LINES



Food Service
eLakesideFoodservice.com



Distinctive Serving Carts
genevadesignsllc.com



Healthcare
eLakesideHealthcare.com



Floor Troughs
madetodrain.com



Modular, Interchangeable Cafeteria Sectionals
multiteriausa.com



Equipment for the Correctional Industry
prisonbilt.com

CONTACT YOUR LOCAL DEALER:

INDUSTRIAL ERGONOMICS, INC.
PO BOX 518 LAKEVILLE, MN 55044-0518
(952) 933-7187 FAX (952) 997-6706
E-MAIL: Sales@Industrial-Ergonomics.com
www.Industrial-Ergonomics.com