



INDUSTRIAL ERGONOMICS®
PO BOX 518 LAKEVILLE, MN 55044-0518
(952) 933-7187 FAX (952) 997-6706
E-MAIL: Sales@Industrial-Ergonomics.com
www.Industrial-Ergonomics.com



STAK SYSTEM®

COMPLETE STORAGE SOLUTIONS

VIDMAR STAK SYSTEM®

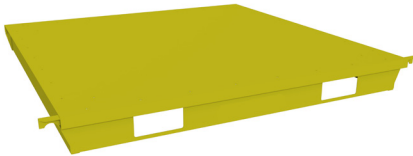
Dynamically-adjustable pallets help maximize storage density optimizing your available vertical space. Plus, the captive lifting and handling device eliminates the need for fork trucks.

- Increase cubic foot storage efficiency of any warehouse or storage location.
- Fits any height location between 9'7" to over 18'
- Scalable - fits any warehouse floor space from 12'x12' and larger
- Eliminates need and demand for fork lifts and associated costs

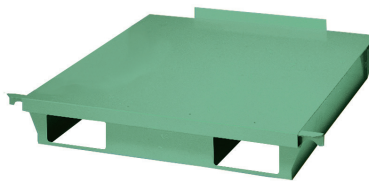


ACCESSORIES

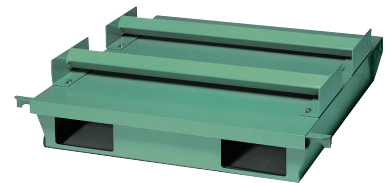
With a long list of available accessories, your STAK System® can be designed to your facility's exact requirements:



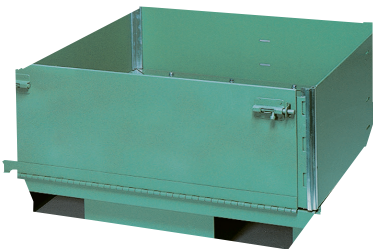
Pallet



Rear Lip Pallet



Rear Storage Pallet



Tub Kit



Tire Storage Pallet



Work-in-Process Cart

PRECONFIGURED MINIMUM & MAXIMUM TABLE

The STAK System® is designed to be easily expanded incrementally as your storage needs grow.

In order to determine which system height will fit best, measure the unobstructed height of your space.

	MINIMAL FOOTPRINT	STANDARD FOOTPRINT
Length	12' 8.5"	Infinite*
Width	11' 11"	Up to 16' 11"
Height	9' 7"	Up to 18' 3.18"
Pallet Width	30"	Up to 60"
Pallet Depth	26.5"	Up to 72"
	*Suggest limiting to 100ft per mast	

COLOR OPTIONS

RACKING & PALLETS

OFF WHITE
S22570

BEIGE
S20100

VIDMAR GREEN
S20606

VIDMAR GRAY
S23321

SAFETY YELLOW
YELLOW

LIGHT BLUE
S22577

STAK BLUE
S22447

DARK BLUE
S22578

BLACK
S20106

BRIDGE & MAST



FEATURES AND BENEFITS

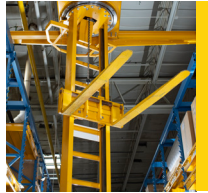
PALLET DIMENSION VARIETY

- 6 widths and 4 depths



MAST ROTATION RESTRAINT

- Maneuvers on four axes for 360° flexibility
- Enables operator to relocate pallets safely and easily
- Included with Pre-configured starter kit pallets safely and easily



PALLET HOOKS

- Pallet hooks every 4" to maximize storage efficiency



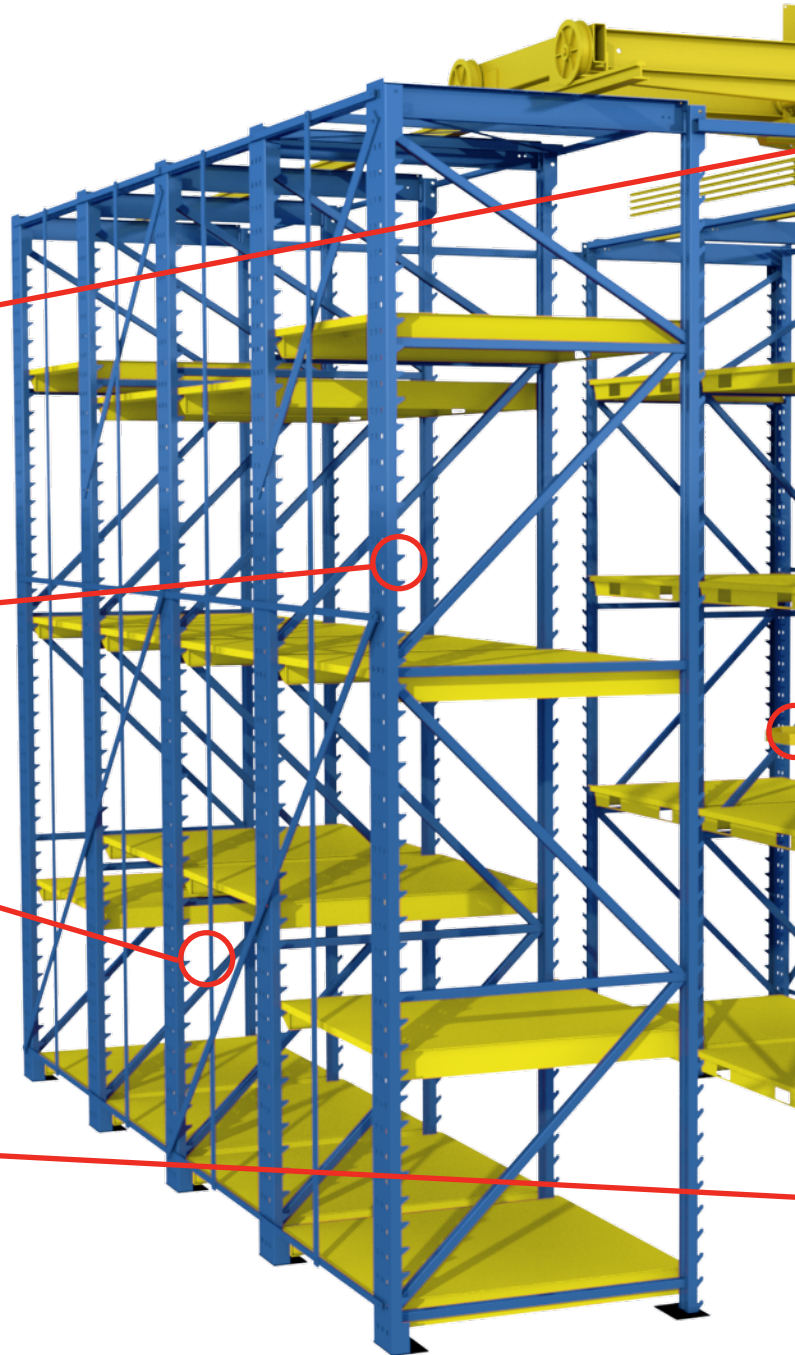
SAFETY NETTING

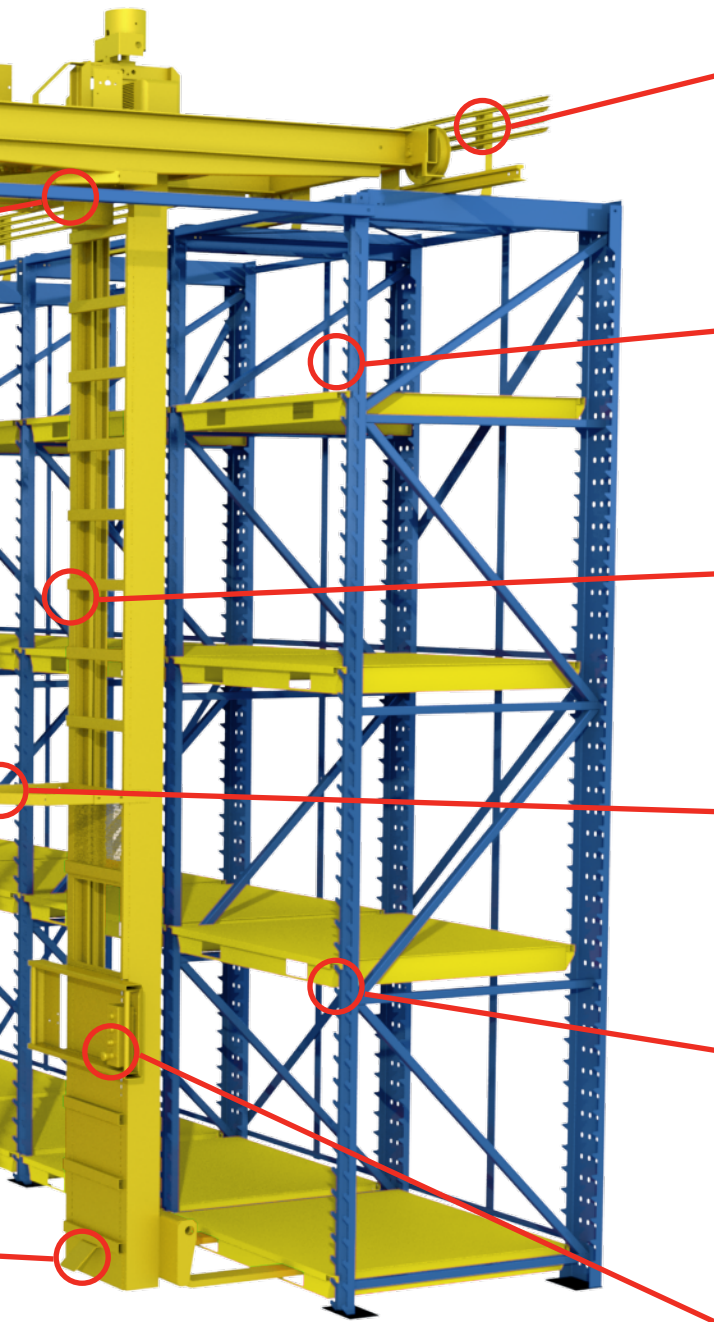
- Flush-mounted nylon mesh or expanded metal
- Recommended for bays on or near traffic aisles or operations areas



MAST BRAKE/FLOOR LOCK

- Holds mast in place while items are being transferred from pallet
- Included in pre-configured starter kits





CANTILEVER OVERHANG

- Enables lifting device to go beyond racking
- Ideal for parts staging or transfer



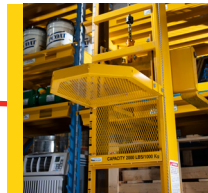
PALLET POSITION INDICATOR

- Enables user to know the exact location of a pallet.



POSITION INDICATOR

- Enables operator to place forks in the exact position required for easy removal and replacement of pallets
- Included on all pre-configured systems.



SAFETY OVERHANG

- Protects the operator
- Standard on all Stak Systems



PALLET/RACK INTERFACE

- Roll-formed columns provide double strength rest hooks, and pallets are reinforced with double-layer steel surfaces



CONTROL SYSTEM

- Easy to learn and easy to use controls don't require license or certification



For a personalized storage consultation,
please contact:

Industrial Ergonomics

612-532-6774

jeff@Industrial-Ergonomics.com



StanleyBlack&Decker